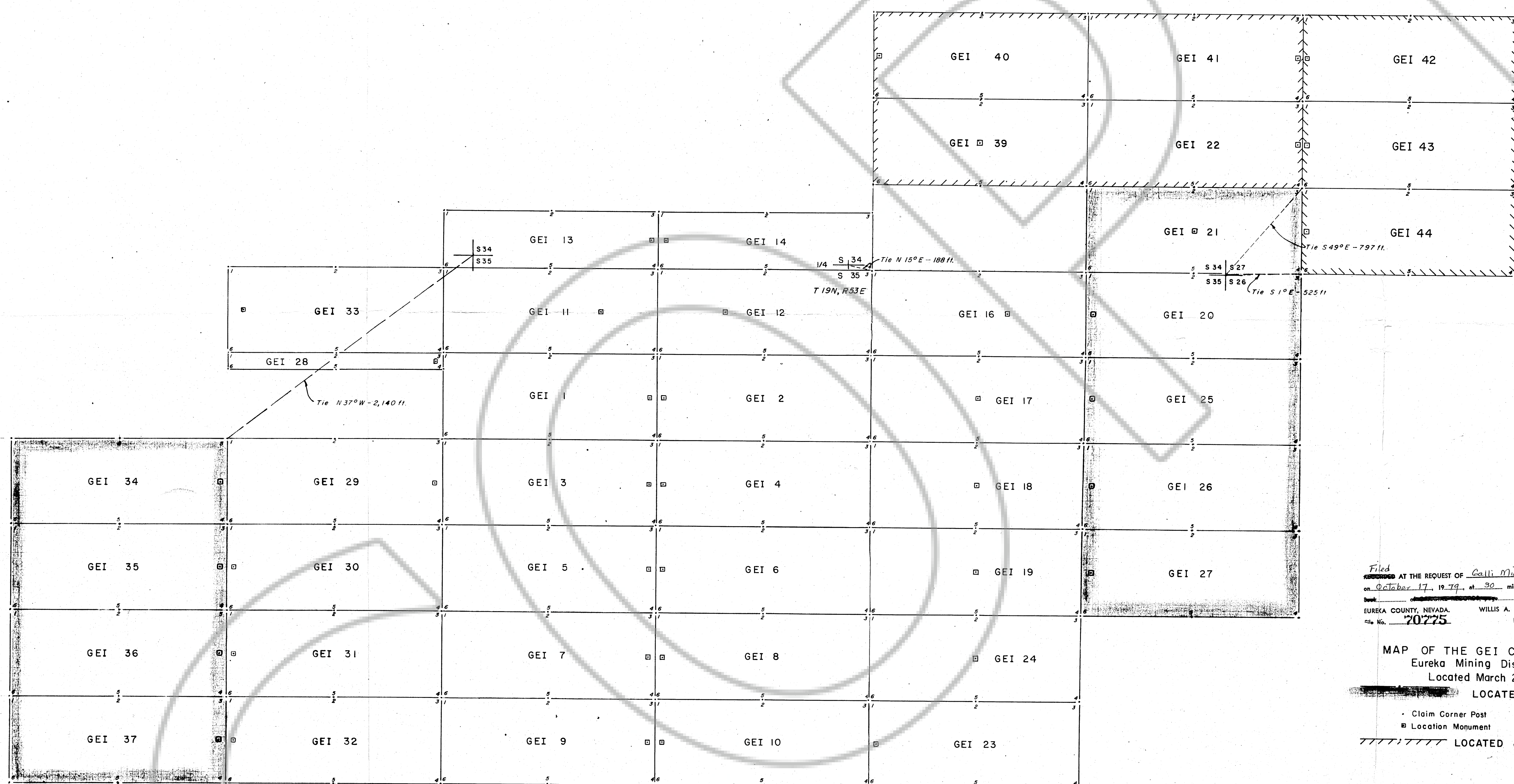


T 19 N., R 53 E.



Filed
 AT THE REQUEST OF *Galli Mineral Associates*
 on *October 17, 1979* at *30* mins. past *3 P.M.* in
 the *70775* RECORDS OF
 EUREKA COUNTY, NEVADA. WILLIS A. D'APOLI Recorder
 Fee \$ *45.00*

MAP OF THE GEI CLAIM GROUP
 Eureka Mining District
 Located March 20-May 29, 1974
 LOCATED MAY 24 - JUNE 1, 1974

Claim Corner Post
 Location Monument
 LOCATED JUNE 19, 1975

LOCATED AUGUST 21, 1979

SCALE: 1 INCH = 400 FEET

GALLI EXPLORATION, INC.
 100 Washington St.
 Reno, NV 89503