

T. 18 N.

12

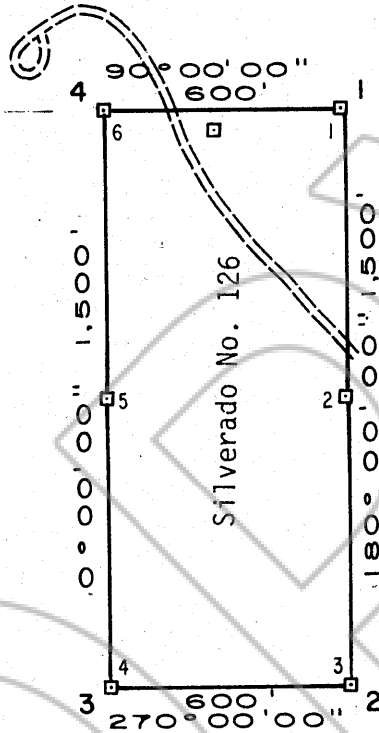
1

R. 52 E.

R. 53 E.

6

7



Silverado Claim No. 126

Maxine T. Grimm, Linda Grimm
and Edward M. Grimm III
P.O. Box 569, Tooele, Utah 84074

Filed
RECORDED AT THE REQUEST OF Lynn H. Erickson
on November 7, 1979, at 32 mins. past 9 A.M. In
Book RECORDS OF
EUREKA COUNTY, NEVADA. WILLIS A. DePAOLI Recorder
File No. 71026 Fee \$ 15.00

Claims located by L.H.Erickson October, 1979

SILVERADO - DIAMOND PROJECT

P.O. BOX 415 - EAST ELY - NEVADA - 89315

Property Map

SILVERADO CLAIM GROUP

Eureka Mining District — Eureka County — Nevada

Scale 1" = 500' Date Oct 17, 1979

Mapping L. H. Erickson

Drafting J. Owens

SD-29

Revised

