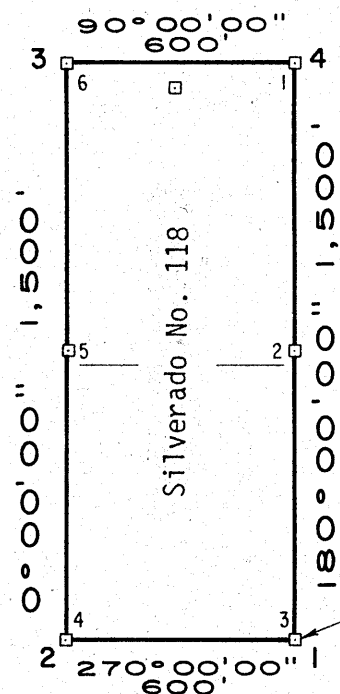
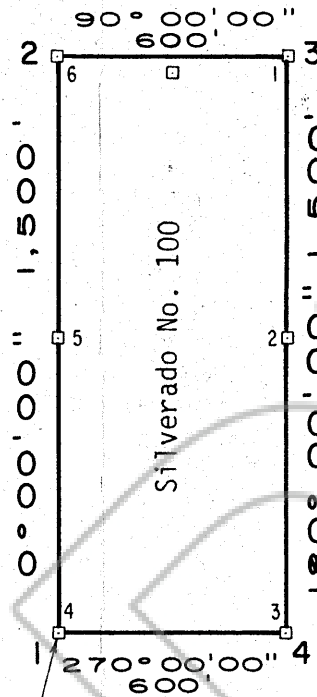


R. 53 E.

31

32



248°13'34" 1,927.52'

14°40'55" 2,367.30'

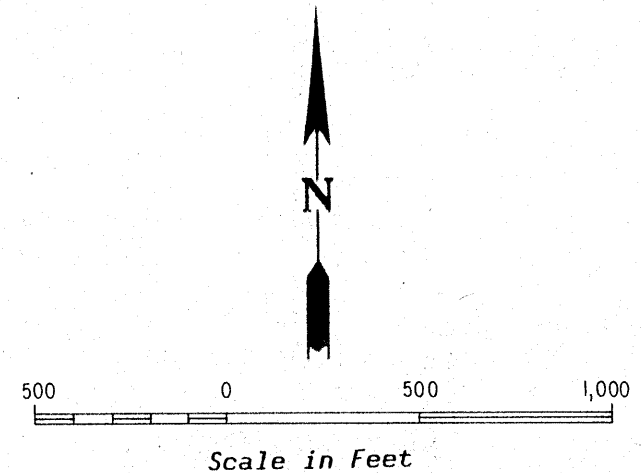
# EXPLANATION

Silverado Claim Nos. 100 & 118

Prescott B. Hardy  
 14860 South 1690 West, Bluffdale, Utah 84065  
 and  
 Charles S. Fawcett  
 P.O. Box 458, Teton Village, Wyoming 83025

Filed  
 RECORDED AT THE REQUEST OF Lynn H. Erickson  
 on November 7, 1979, at 22 mins. past 9 A.M. In  
 \_\_\_\_\_, RECORDS OF  
 EUREKA COUNTY, NEVADA. WILLIS A. DePAOLI Recorder  
 File No. 71029 Fee \$ 30.00

Claims located by L.H.Erickson September, 1979



## SILVERADO - DIAMOND PROJECT

P.O. BOX 415 - EAST ELY - NEVADA - 89315

Property Map  
 SILVERADO CLAIM GROUP  
 MINERS DREAM AREA

Eureka-Secret Canyon Mining District - Eureka County - Nevada

Scale 1" = 500' Date Oct 12, 1979

Mapping L. H. Erickson

Drafting J. Owens

### SD-17

Revised

6

5

T. 19 N.  
T. 18 N.