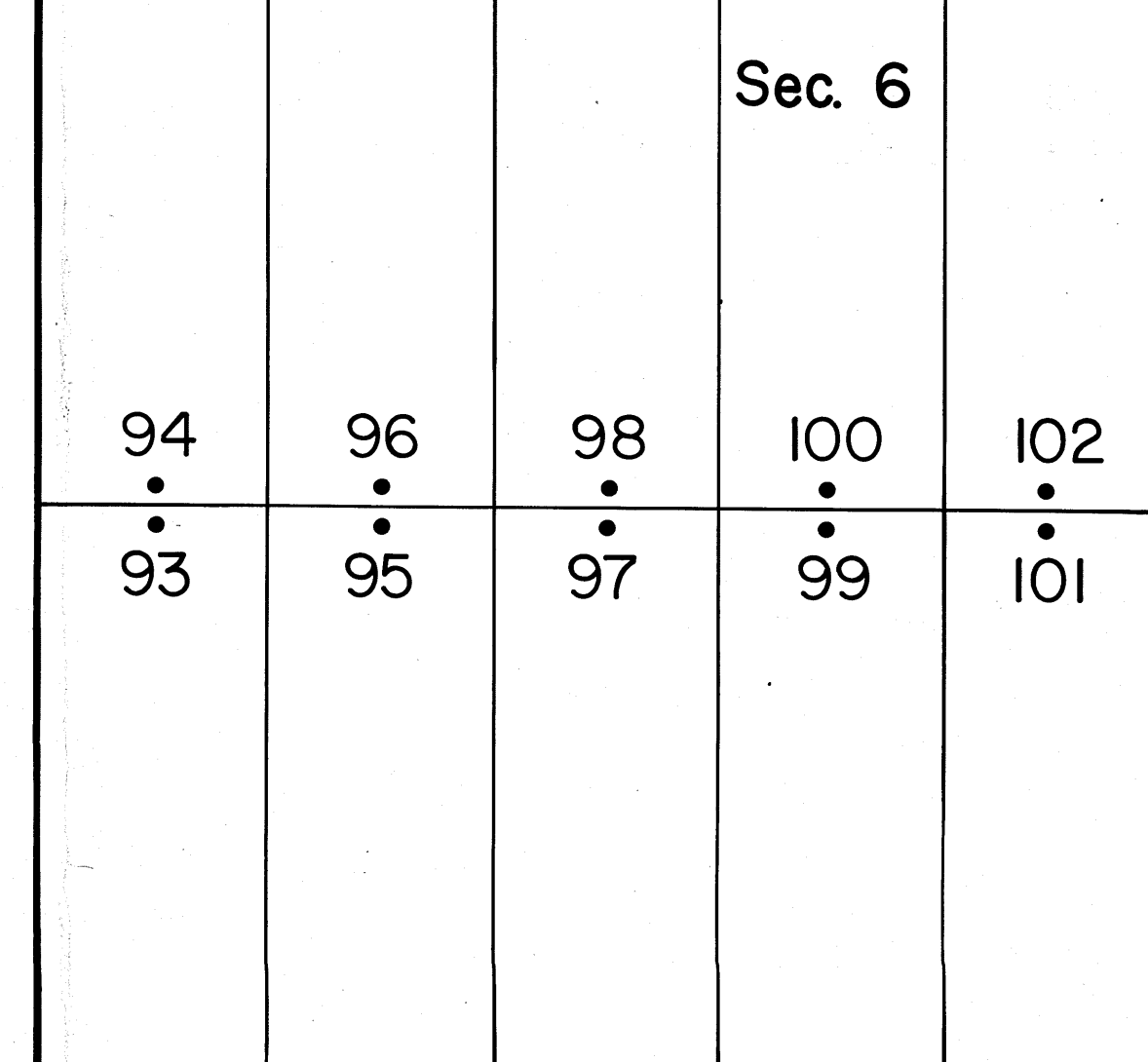
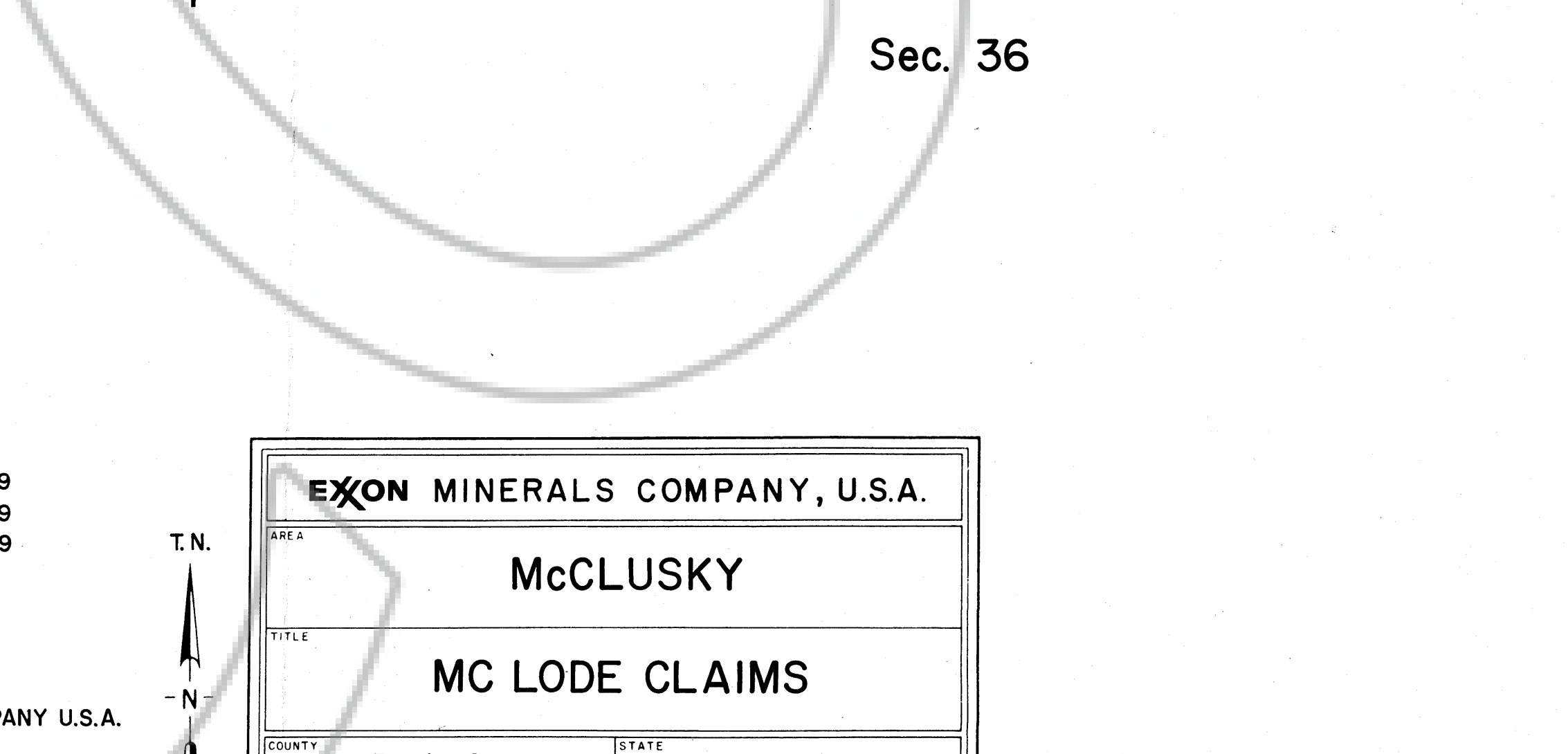
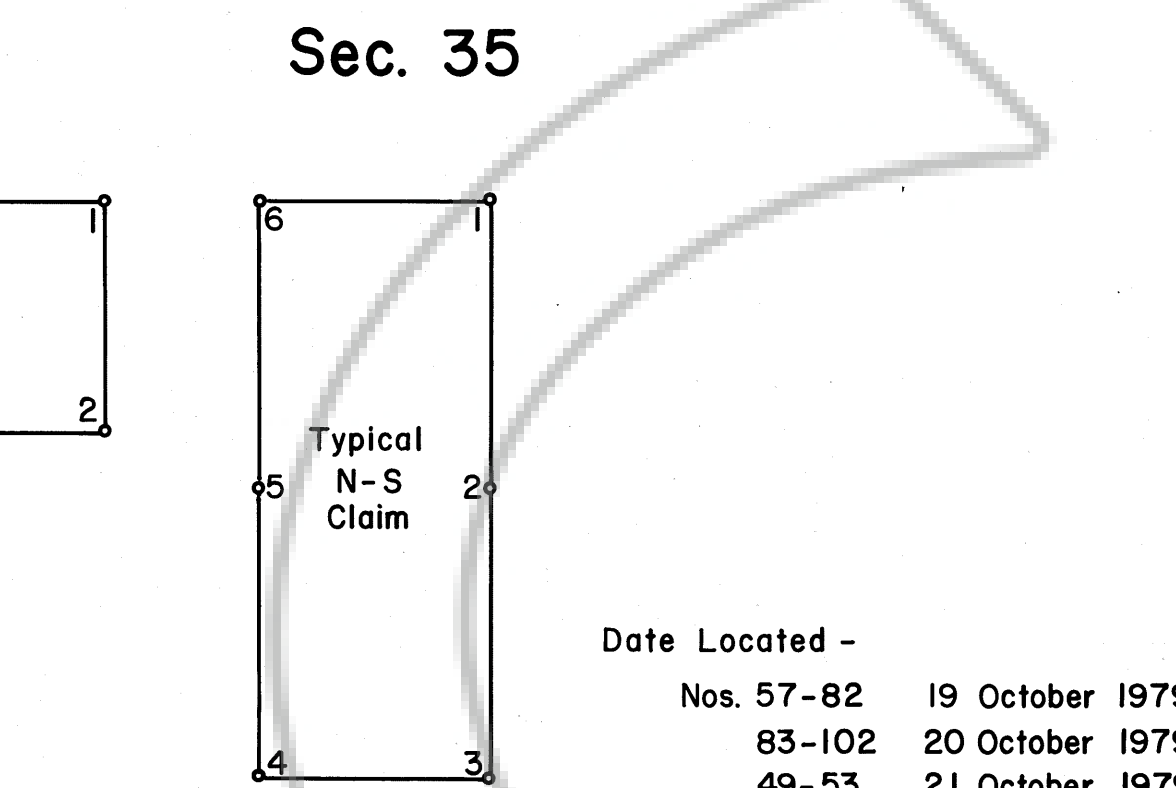
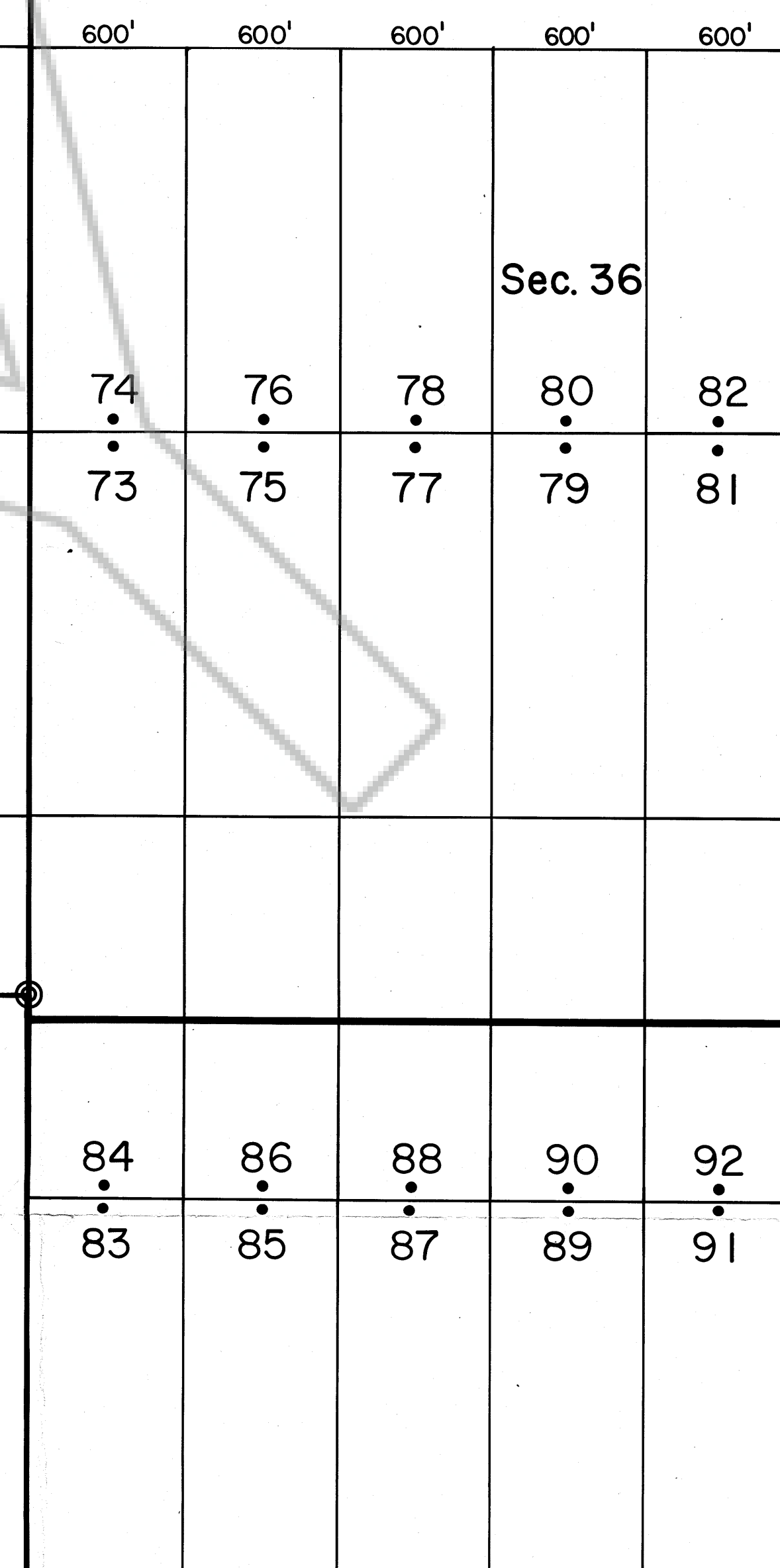
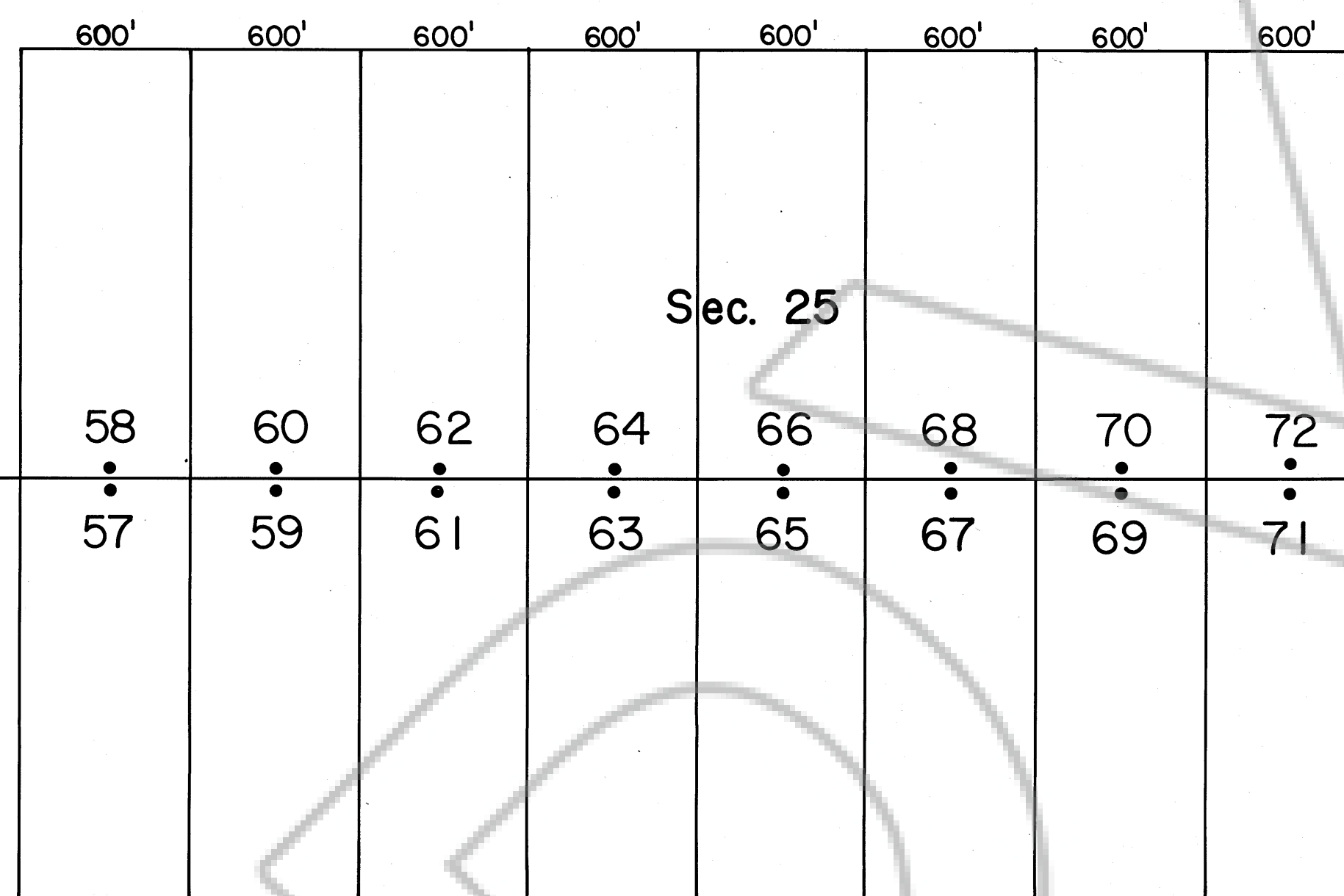
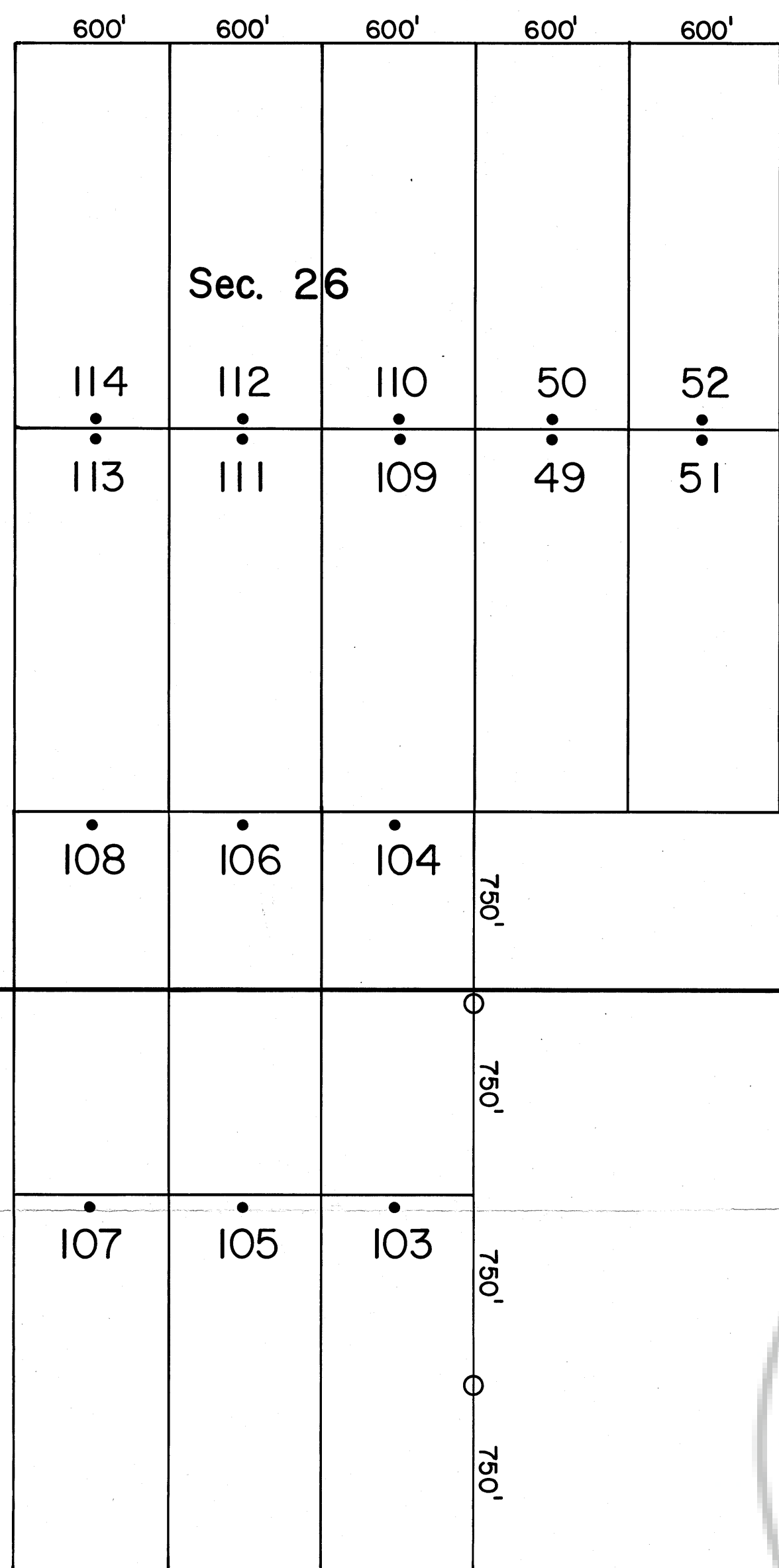


R 48 E

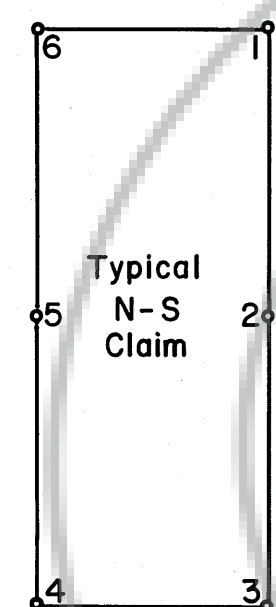
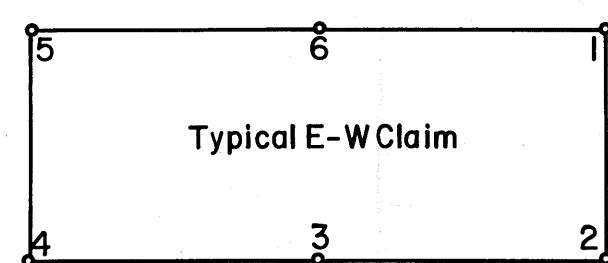
R 48 1/2 E



T 24 N

T 24 N

T 23 1/2 N



Date Located -  
 Nos. 57-82 19 October 1979  
 83-102 20 October 1979  
 49-53 21 October 1979  
 55 " " "  
 103-114 " " "

Located by -  
 EXXON MINERALS COMPANY U.S.A.  
 P.O. Box 120  
 Denver, Colorado 80201

Notes:

- All claim corners are 4" X 4" wooden posts.
- Discovery Monument
- Claim corner post
- Claim corners are typically numbered as shown in sketches above.
- All claims are referenced to and survey started from the SE Cor., Sec. 36, T 24 N, R 48 E.



EXXON MINERALS COMPANY, U.S.A.	
McCLUSKY	
MC LODE CLAIMS	
COUNTY	STATE
Eureka Co.	Nevada
CONTOUR INTERVAL	SCALE
	1" = 500'
PROJECT NO.	DATE
	11/8/79
CHECKED BY	Map 1 of 1
DRAFTED BY	jah

Filed AT THE REQUEST OF Exxon Minerals Co., U.S.A.  
 on November 15, 1979, at 10:00 a.m. past 3 P.M. in  
 EUREKA COUNTY, NEVADA. WILLIS A. DePAOLI Recorder  
 File No. 71112 Fee \$ 9602