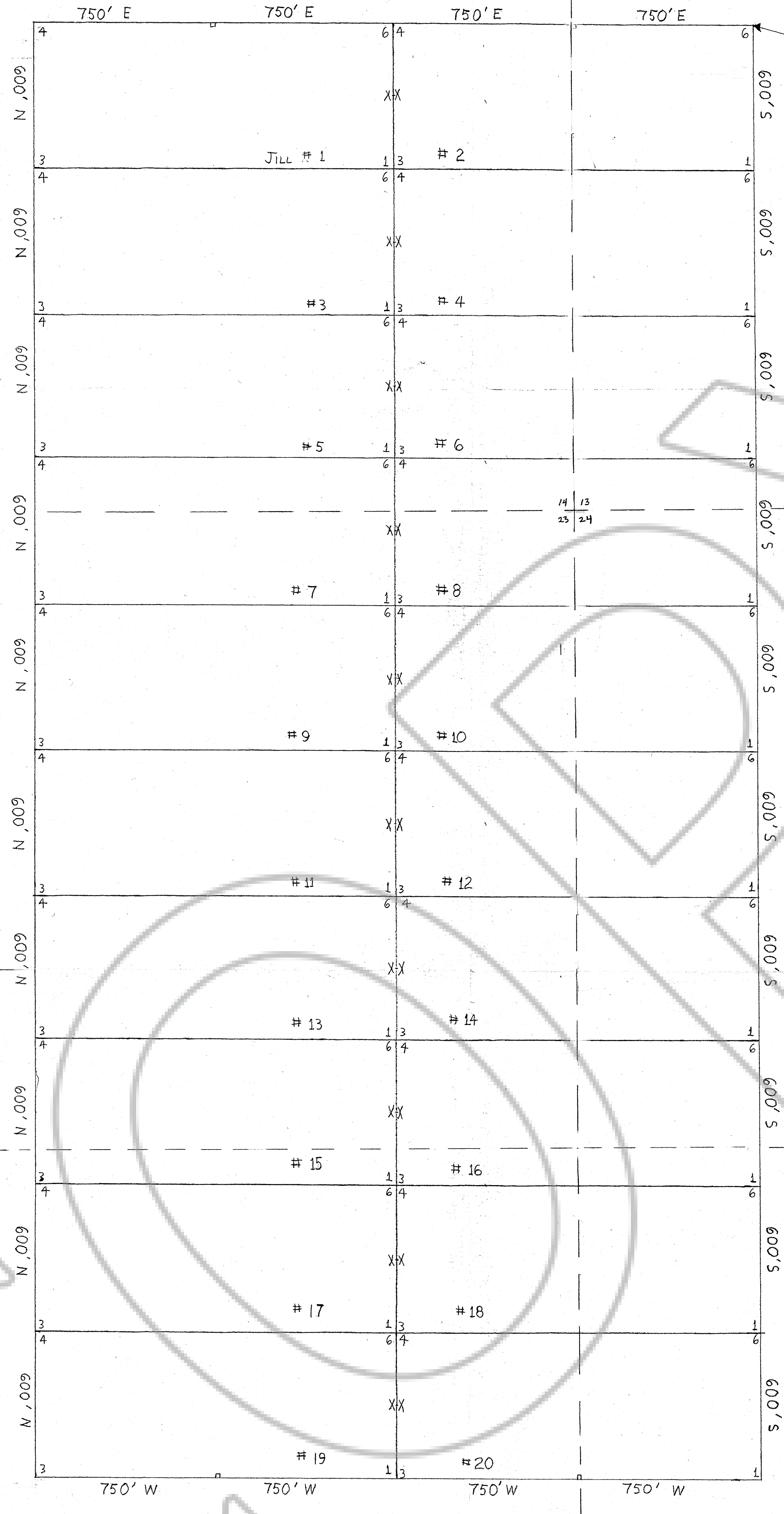


72316



SEC. 18 T.21N., R.53E.
SEC. 19

SEC 23

SEC 24

TRUE NORTH
SCALE: 1" = 300'

X - DENOTES LOCATION MONUMENTS

WHISTLER MTN. QUADRANGLE
15 MINUTE SERIES (TOPOGRAPHIC)

Filed
RECORDED AT THE REQUEST OF *All Minerals Corporation*
on *January 29, 1980*, at *00* min. past *4 P.* M. by
Willis A. DePaoli
EUREKA COUNTY, NEVADA. WILLIS A. DePAOLI Recorder
File No. **72316** Fee \$ **300.00**

RECORDER'S STAMP

MAP OF THE JILL NO. 1 THRU 20
GROUP OF LODE CLAIMS
SEC. 13, 14, 23, 24, T.21N., R.53E.
EUREKA CO. NV
LOCATED BY: ALL MINERALS CORP.
P.O BOX 7680
MURRAY UTAH 84107
LOCATED ON 2 Nov., 1979
ALL CORNERS ARE 4" DIAM. WHITE PVC PIPE