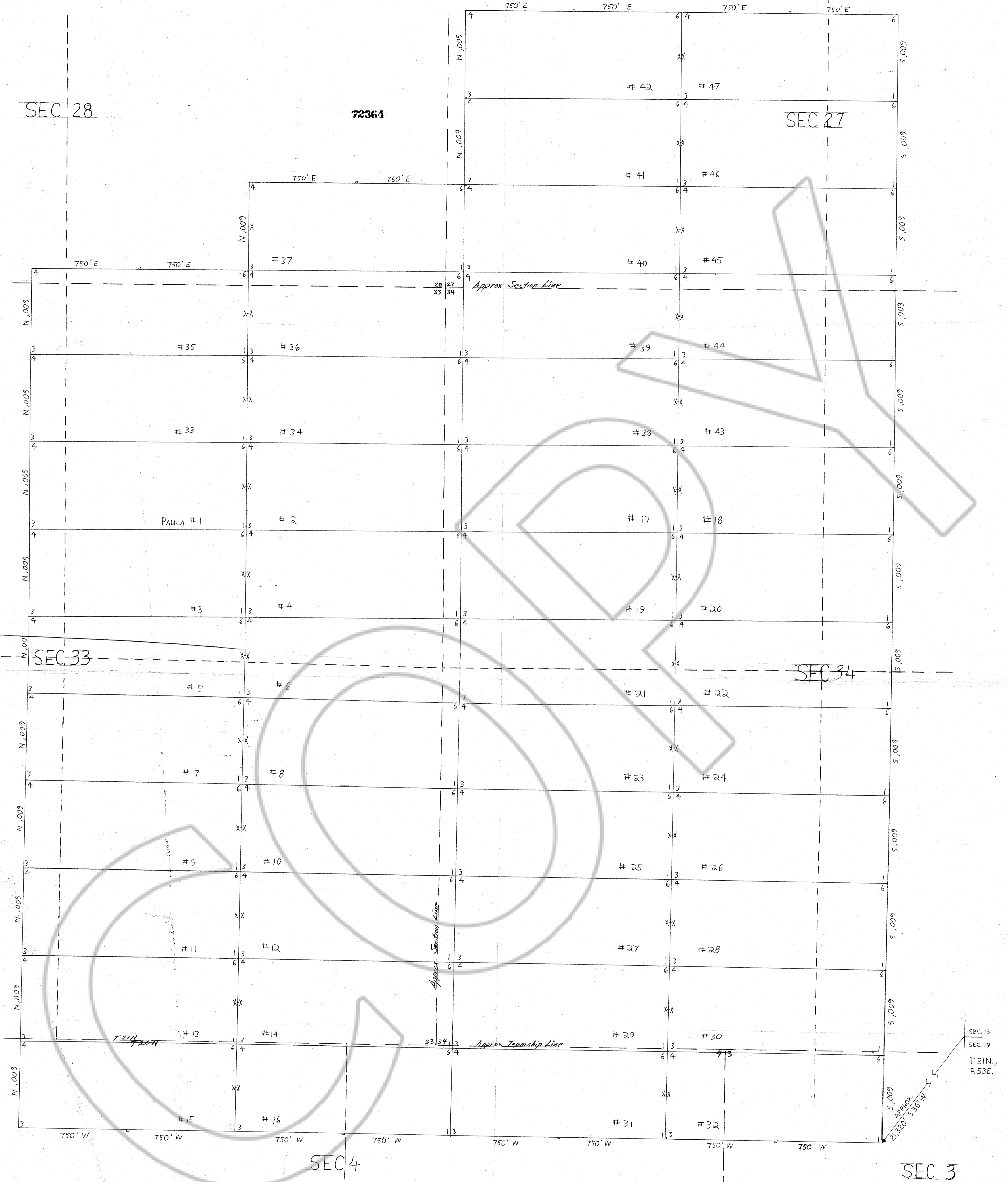


SEC 28

72364

SEC 27



X- DENOTES LOCATION MONUMENT

SCALE: 1" = 300'

WHISTLER MTN. QUADRANGLE
15 MINUTE SERIES (TOPOGRAPHIC)

Filed
 RECORDED AT THE REQUEST OF *All Minerals Corporation*
 on *January 29, 1980*, at *10:00* a.m. part *4 B.M.* in
 Book *_____* of *OFFICIAL RECORDS* RECORDS OF
 EUREKA COUNTY, NEVADA WILLIS A. DePAOLI Recorder
 File No. **72364** Fee \$ **705.00**

MAP OF THE PAULA NO. 1 THRU 47
 GROUP OF LODE CLAIMS
 SEC. 27,28,33,+34 T.21N.,R.52E + SEC. 3+4T.20N.,R.52E
 EUREKA CO. NV
 LOCATED BY: ALL MINERALS CORP.
 P.O BOX 7680
 MURRAY UTAH 84107
 LOCATED ON 2,3,7,+14 Nov. 1979
 ALL CORNERS ARE 4" DIAM WHITE PVC PIPE
 OR 4" x 4" WOODEN POSTS