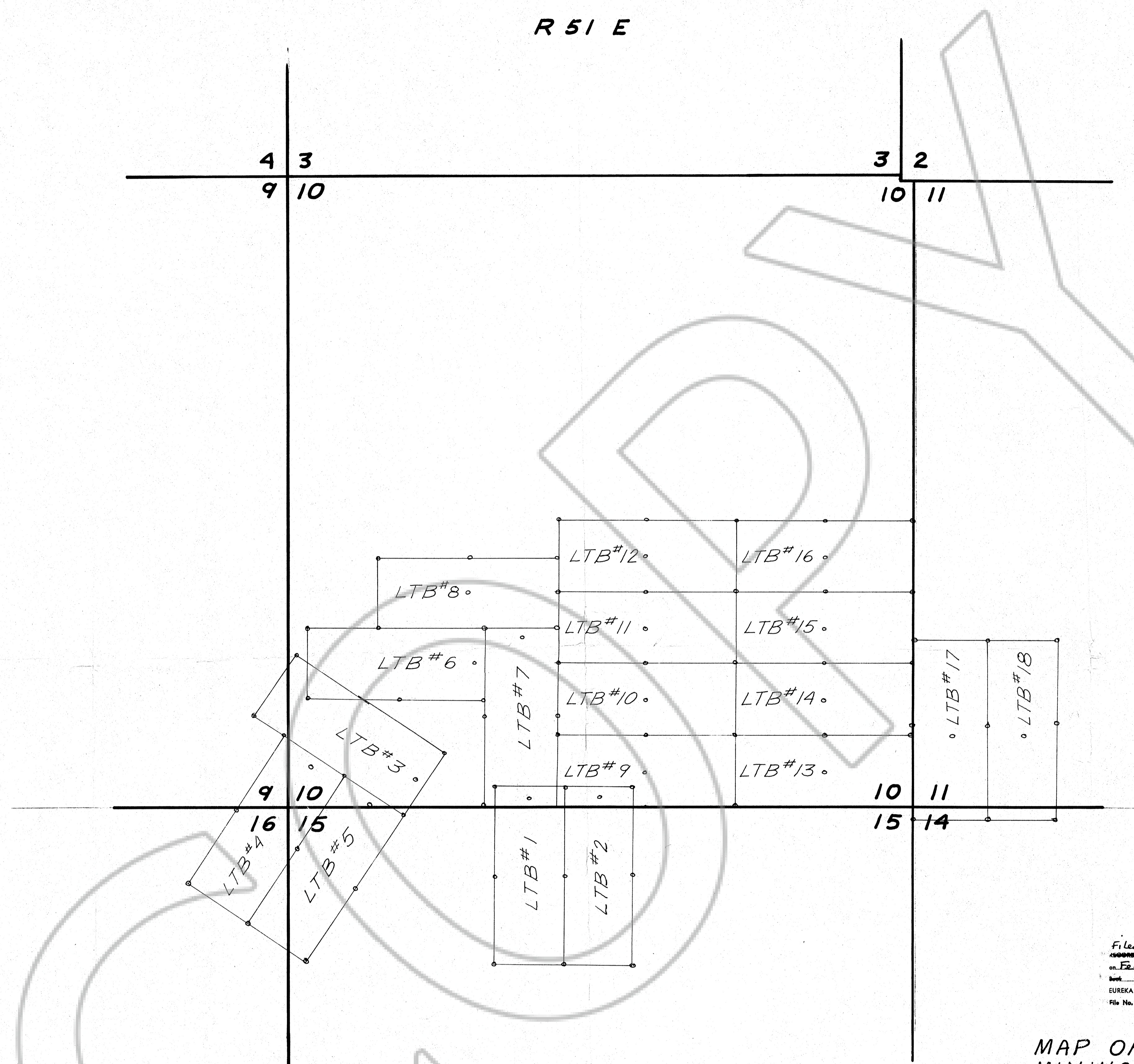


R 51 E

T 31 N



↑
 N
 ↑
 TRUE
 NORTH
 SCALE 1" = 500'

Filed
 RECORDED AT THE REQUEST OF Ludwig Exploration
 on February 2, 1980 at 4:55 mins past 11 A.M. in
 Book _____ of _____ RECORDS, page _____
 EUREKA COUNTY, NEVADA WILLIS A. DePAOLI Recorder
 File No. 72484 Fee \$ 370.00

MAP OF THE LTB LODE
 MINING CLAIM GROUP SHOWING
 LTB#1 THRU LTB 18 IN
 SECTIONS 9, 10, 11, 14 & 15 & 16
 T 31 N, R 51 E IN THE SAFFORD
 MINING DISTRICT EUREKA
 COUNTY NEVADA. LOCATED
 ON THE 5th 6th & 7th DAYS
 OF NOVEMBER 1979 BY:
 LUDWIG EXPLORATION P.O. BOX
 511 ELKO, NEVADA 89801