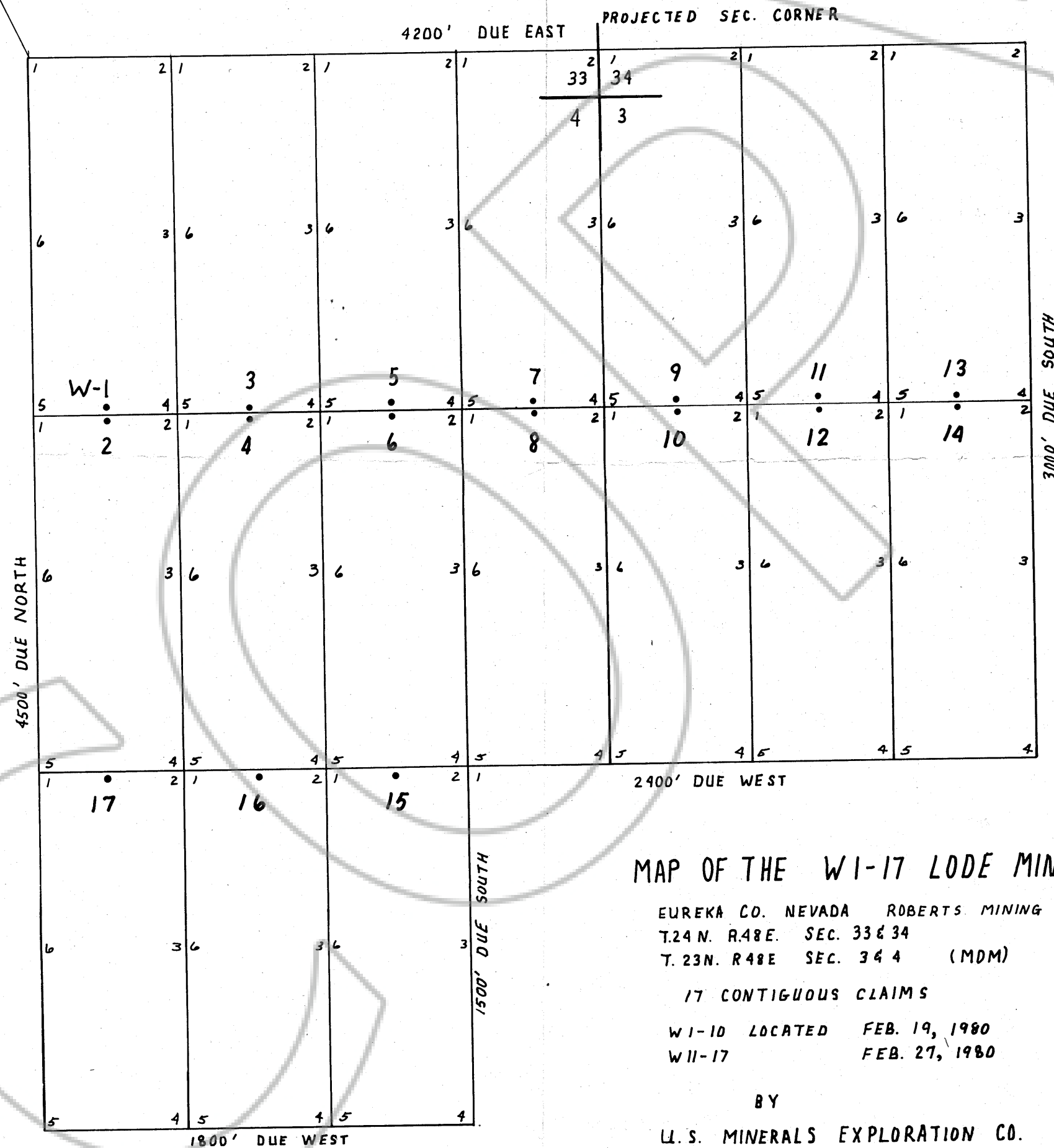
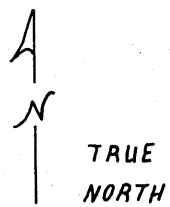


5500' N 26° W FROM CORNER #1 OF CLAIM W-1 TO NW CORNER OF SEC 33.

T. 24 N.  
T. 23 N



T. 24 N.  
T. 23 N.



### MAP OF THE W1-17 LODE MINING CLAIMS

EUREKA CO. NEVADA ROBERTS MINING DIST.

T. 24 N. R. 48 E. SEC. 33 & 34

T. 23 N. R. 48 E. SEC. 34 4 (MDM)

17 CONTIGUOUS CLAIMS

W1-10 LOCATED FEB. 19, 1980

W11-17 FEB. 27, 1980

BY

U.S. MINERALS EXPLORATION CO.

12395 W 53rd Ave Suite G-10

Arvada Co 80002

Filed  
RECORDED AT THE REQUEST OF  
U.S. Minerals Exploration Co.  
on April 7, 1980  
at 00 mins. past 11 A. M.  
in Book of OFFICIAL  
RECORDS page       , RECORDS  
OF EUREKA COUNTY, NEVADA  
WILL A. DePAOLI  
Recorder  
File No. 72951 Fee \$ 255.00

• LOCATION MONUMENT

72951