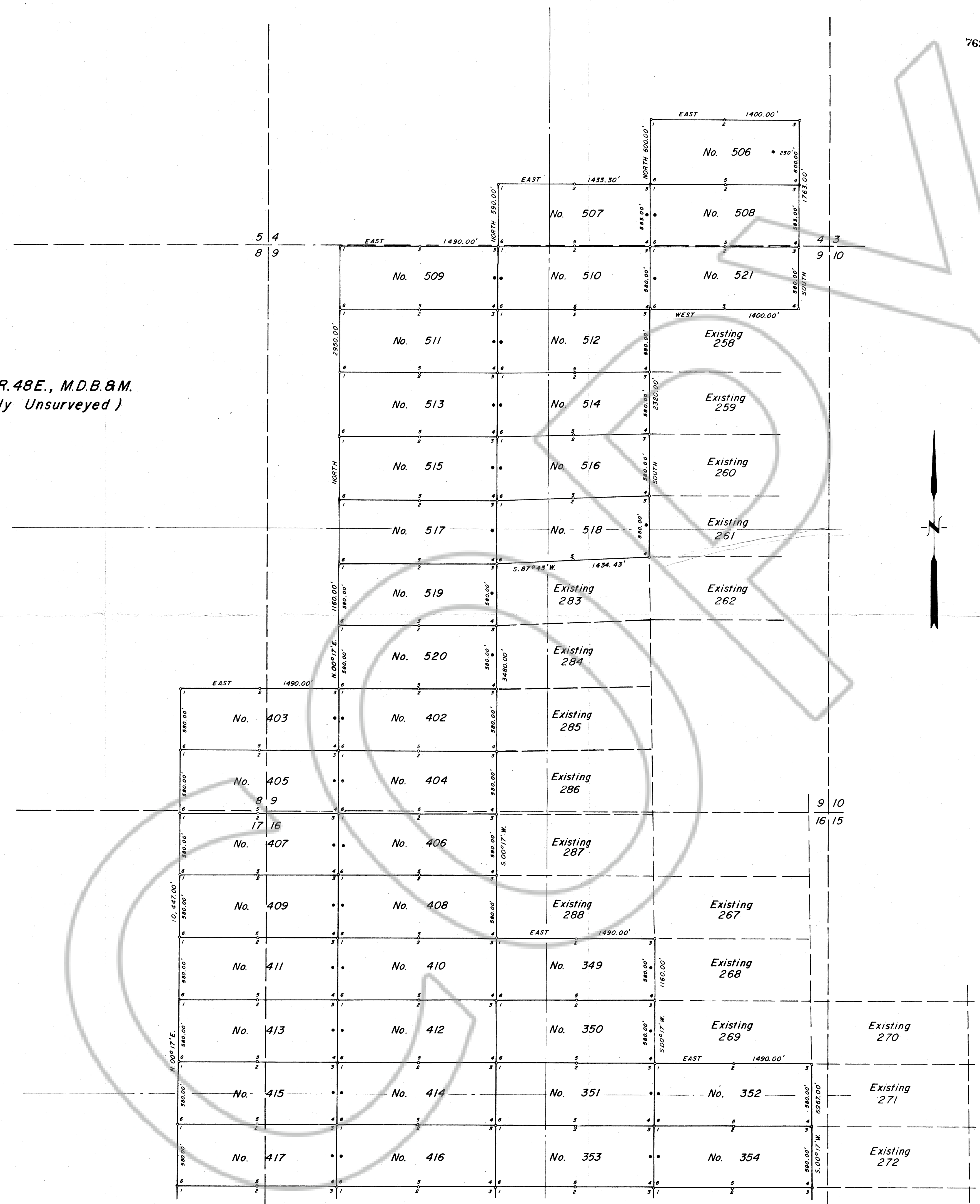


T. 26 N., R. 48 E., M.D.B. & M.
(Partially Unsurveyed)



76267

NOTES:

All Claims are 600' wide and 1500' long except as noted.

All Discovery Monument are 10' in from the end lines except as noted.

At all Corners, Side Centers and Discovery Monuments are 4" dia. x 4 1/2' long posts with aluminum tags denoting the appropriate corners.

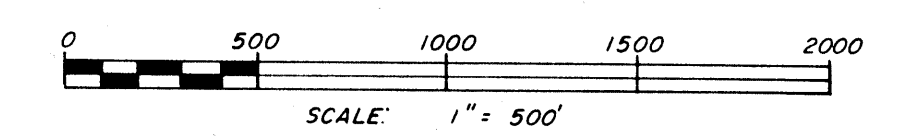
○ = Corners & Side Center Posts
● = Discovery Monuments

NEE Nos. 349 through 380 located on July 2, 1980.
NEE Nos. 402 through 445 located on July 3, 1980.
NEE Nos. 381 through 401 & 454 through 469 located on July 7, 1980.
NEE Nos. 470 through 495 & 498 through 504 located on July 8, 1980.
NEE Nos. 452 & 453 located on July 10, 1980.
NEE Nos. 496 & 497 located on July 11, 1980.
NEE Nos. 506 through 521 located on July 14, 1980.
NEE Nos. 446 through 451 & 505 located on July 17, 1980.

These Claims are located by Placer Amex, Inc.
1 Calif. Bldg.
San Francisco, CA 94111

There are a total of 173 claims.

Filed AT THE REQUEST OF
BOUNDY & FORMAN, INC.
on August 28, 1980
at 21 miles, post 1, 2 M.
RECORDS
OF EUREKA COUNTY, NEVADA
WILL A. DePAOLI
Recorder
No. 76267 Fee \$ 25.95



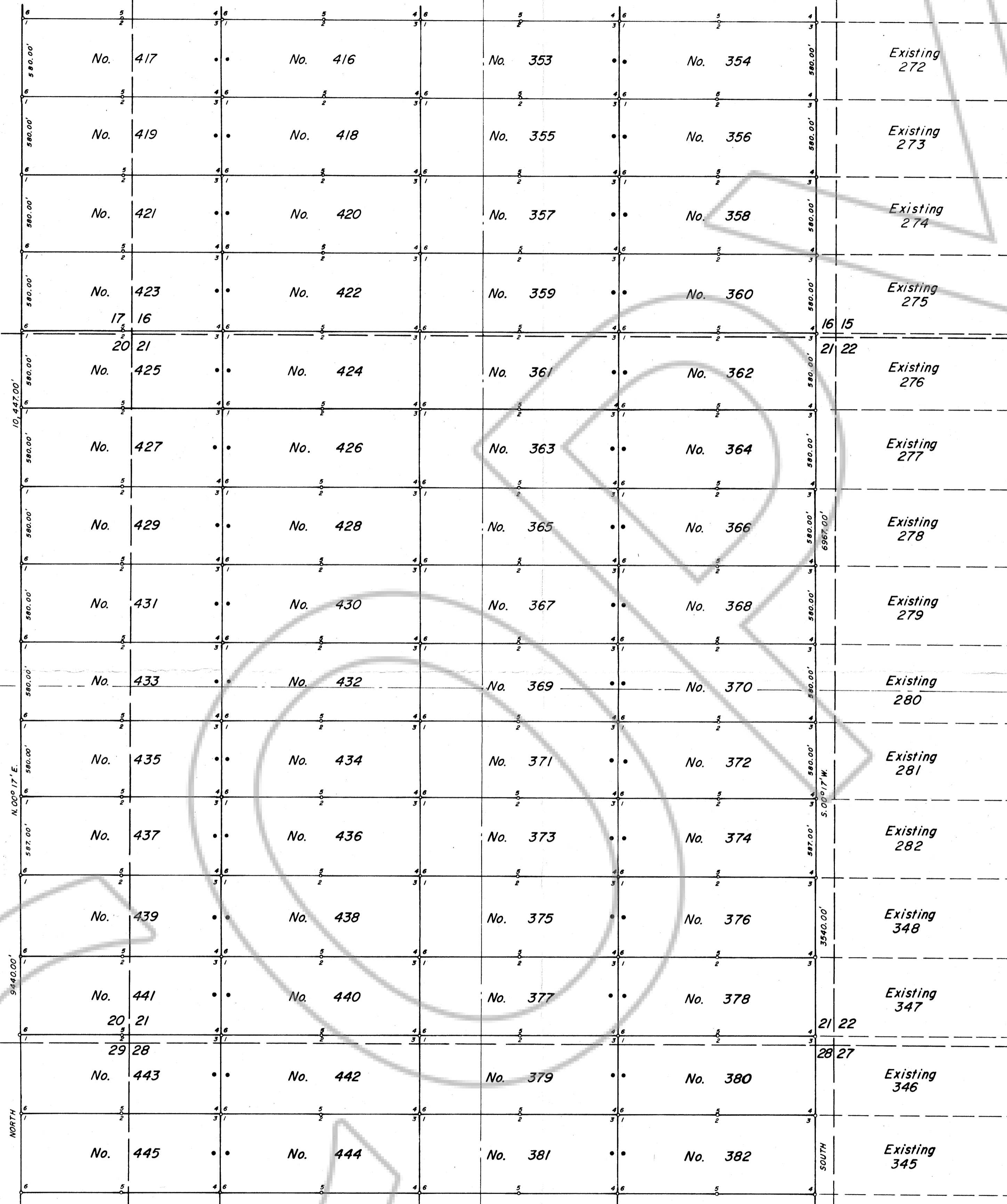
SHEET NO. 1 of 3

MAP SHOWING THE
NEE LODE CLAIMS NOS. 349-521
LOCATED IN
T. 26 N., R. 48 E., M.D.B. & M.
IN THE
CORTEZ MINING DISTRICT
EUREKA COUNTY, NEVADA
BY
PLACER AMEX, INC.

SURVEYED & MAPPED
BY
BOUNDY & FORMAN, INC.
ELY, NEVADA
JULY, 1980

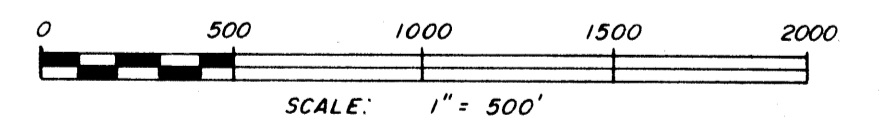
JOINS SHEET NO. 2

JOINS SHEET NO. 1



T. 26 N., R. 48 E., M.D.B. & M.
(Partially Unsurveyed)

Filed AT THE REQUEST OF
 Boundy & Forman, Inc.
 on August 22, 1980
 at 2:15 p.m.
 RECORDS
 OF EUREKA COUNTY, NEVADA
 WILL A. DIFALDI
 Registrar
 File No. 76267 Fee \$25.95

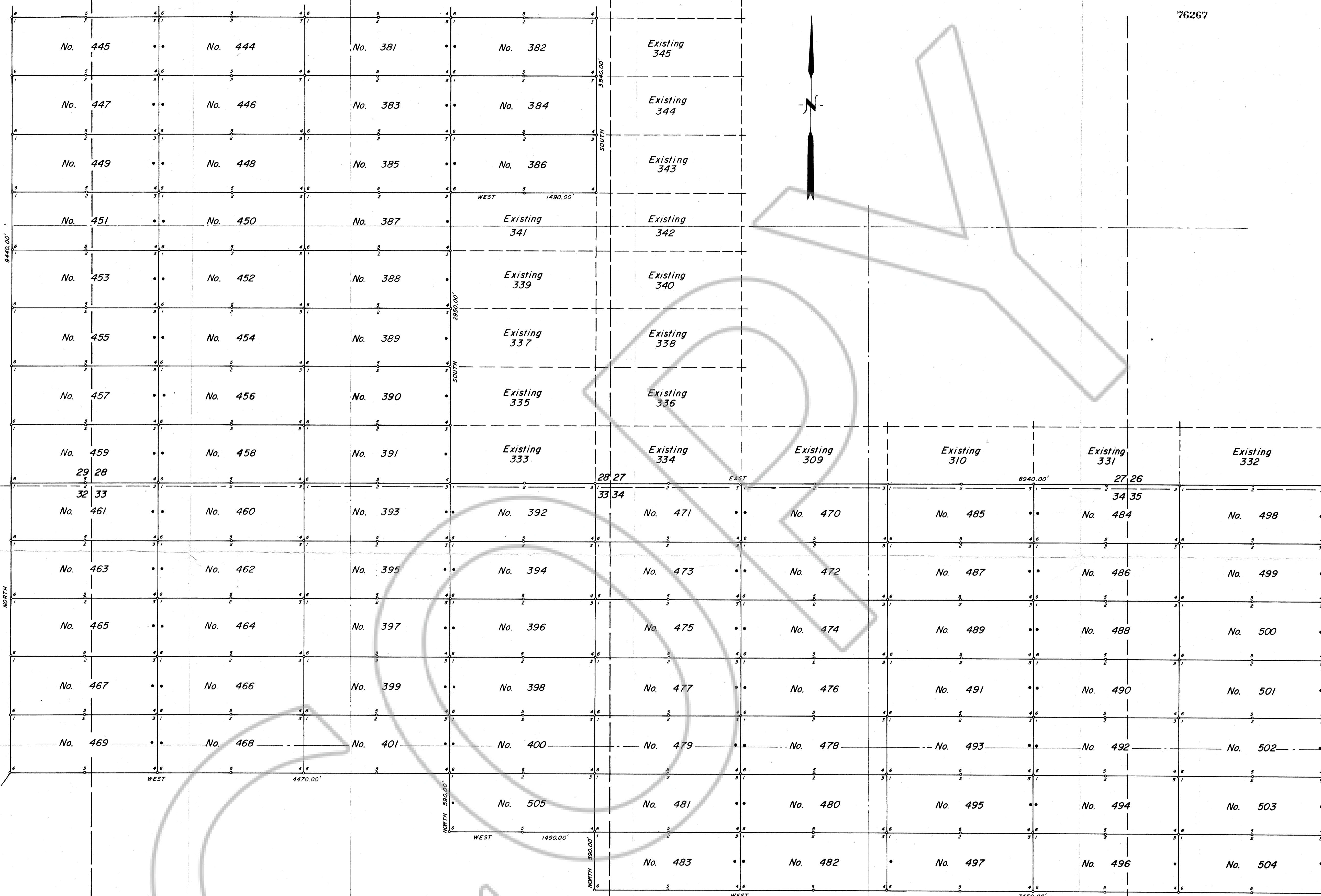


JOINS SHEET NO. 3

SHEET NO. 2 of 3

MAP SHOWING THE
NEE LODGE CLAIMS NOS. 349-521
 LOCATED IN
 T. 26 N., R. 48 E., M.D.B. & M.
 IN THE
 CORTEZ MINING DISTRICT
 EUREKA COUNTY, NEVADA
 BY
PLACER AMEX, INC.

SURVEYED & MAPPED
 BY
 BOUNDY & FORMAN, INC.
 ELY, NEVADA
 JULY, 1980



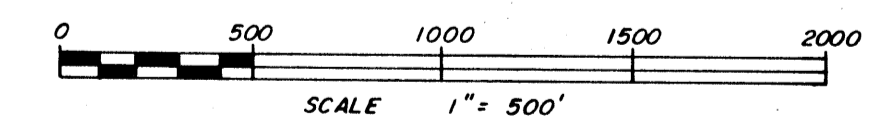
Sec. 32 T. 26N., R. 48E., M.D.B. & M.
 5 4 T. 25N., R. 48E., M.D.B. & M.

32 33 T. 26N., R. 48E., M.D.B. & M. (Partially Unsurveyed)
 T. 25N., R. 48E., M.D.B. & M.

33 34

34 35

Filed AT THE REQUEST OF
 Boundy & Forman, Inc.
 on August 28, 1980
 at 2:11 p.m. post 1 P.M.
 RECORDS
 OF EUREKA COUNTY, NEVADA
 WILL A. DePAOLI
 Recorder
 File No. 76267-100 & 2595



SHEET NO. 3 of 3

MAP SHOWING THE
NEE LODE CLAIMS NOS. 349-521
 LOCATED IN
 T. 26 N., R. 48 E., M. D. B. & M.
 IN THE
CORTEZ MINING DISTRICT
 EUREKA COUNTY, NEVADA
 BY
PLACER AMEX, INC.

SURVEYED & MAPPED
 BY
 BOUNDY & FORMAN, INC.
 ELY, NEVADA
 JULY, 1980