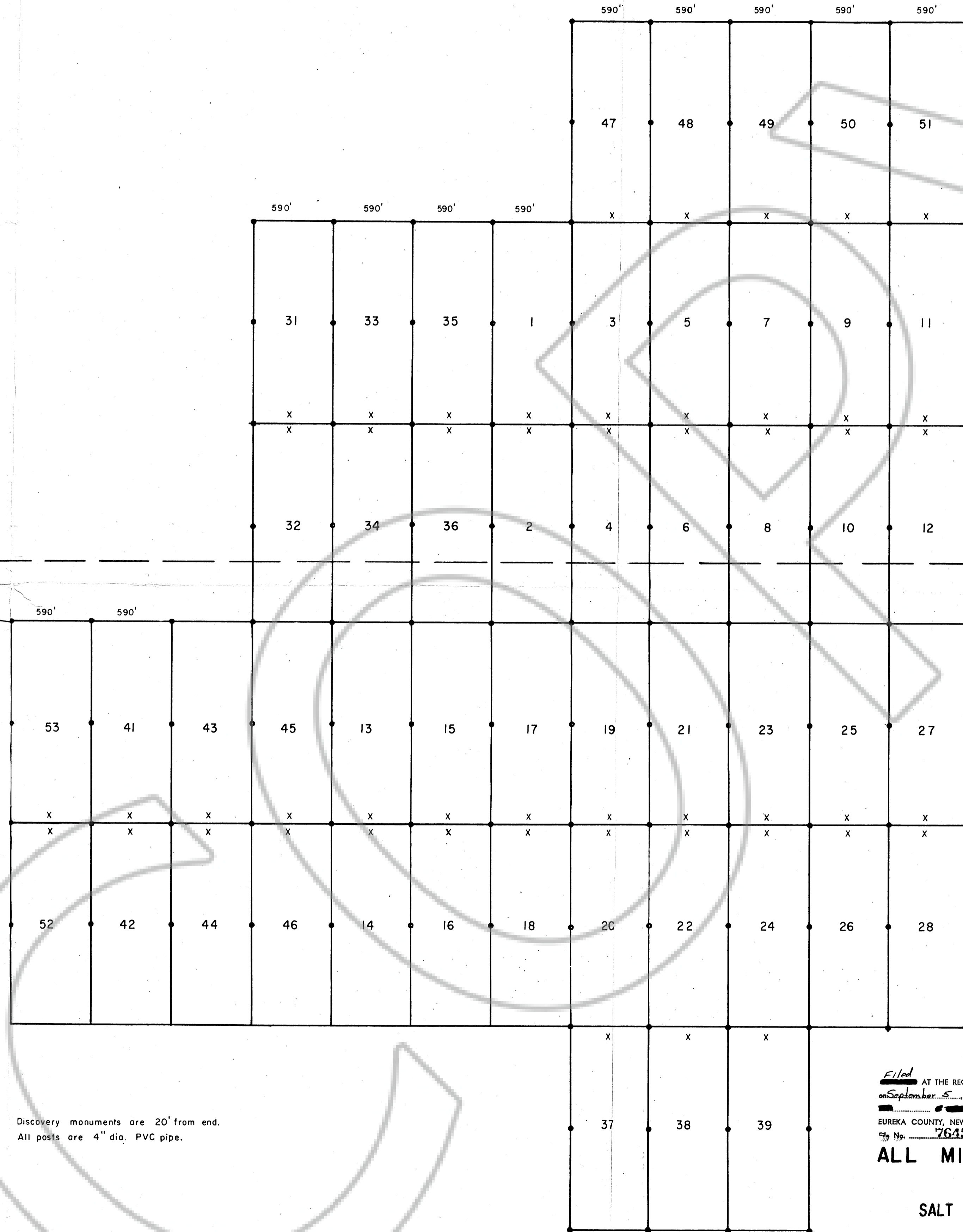


76457

T. 23 N. 24 25
R. 49 E. R. 50 E.

Approx. 12180'
S 87° 45' E



Discovery monuments are 20' from end.
All posts are 4" dia. PVC pipe.

SCALE 1" = 500'

Filed AT THE REQUEST OF *All Minerals Corp.*
on September 5, 1980, at 4:45 min. past 11 A.M.
EUREKA COUNTY, NEVADA. WILLIS A. DePAOLI, Recorder
File No. 76457 Fee \$ 350.00

ALL MINERALS CORPORATION

P.O. BOX 7680

SALT LAKE CITY, UTAH 84107

LYNDALL LODE CLAIMS

UNKNOWN MINING DISTRICT
EUREKA CO.

NEVADA

CLAIMS ARE IN T23N, R50E MDB&M