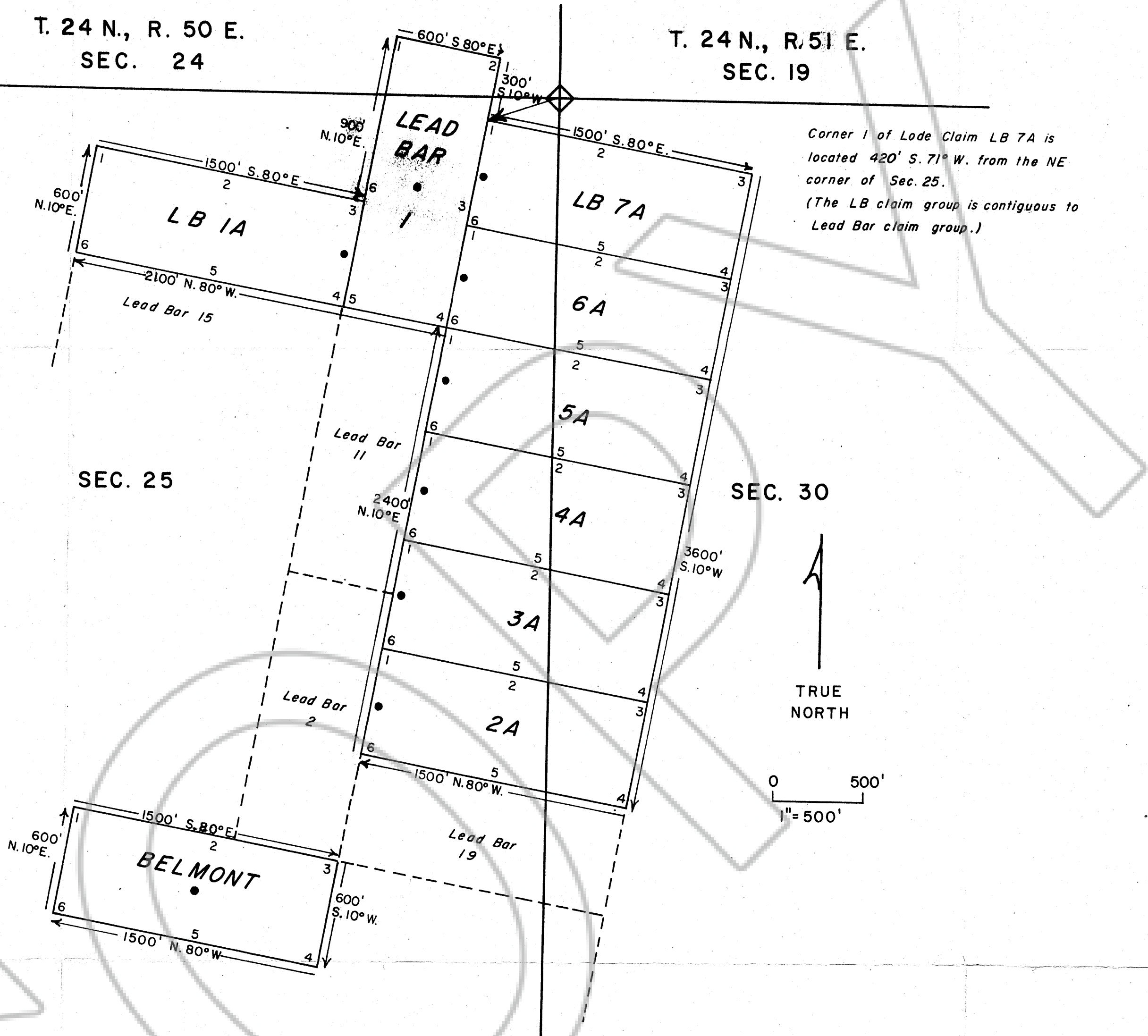


T. 24 N., R. 50 E.
SEC. 24

T. 24 N., R. 51 E.
SEC. 19



MAP OF THE LB 1A - 7A, LEAD BAR I, AND BELMONT LODE MINING CLAIMS

Located in the unknown mining district of Eureka County, Nevada
Township 24 North, Range 50 East, sec. 24 & 25, Township 24 North, Range 51 East, sec. 30.

by
U.S. MINERALS EXPLORATION COMPANY, INC.
12395 W. 53rd Ave., Suite G-10.
Arvada, Co. 80002

Dates located: Belmont Aug. 3, 1980
LEAD BAR I July 1, 1939
LB 1A-7A Aug 27, 1980

Filed
RECORDED AT THE REQUEST OF U.S. Minerals Exploration Company, Inc.
on September 25, 1980, at 22 mins. past 10 A.M. in
Book _____ of OFFICIAL RECORDS, page _____, RECORDS OF
EUREKA COUNTY, NEVADA. WILLIS A. DePAOLI Recorder
File No. 76853 Fee \$ 120.00

• Location monument; 8 claims total

All corners, side centers and location monuments are 4" diameter PVC pipe or trees.