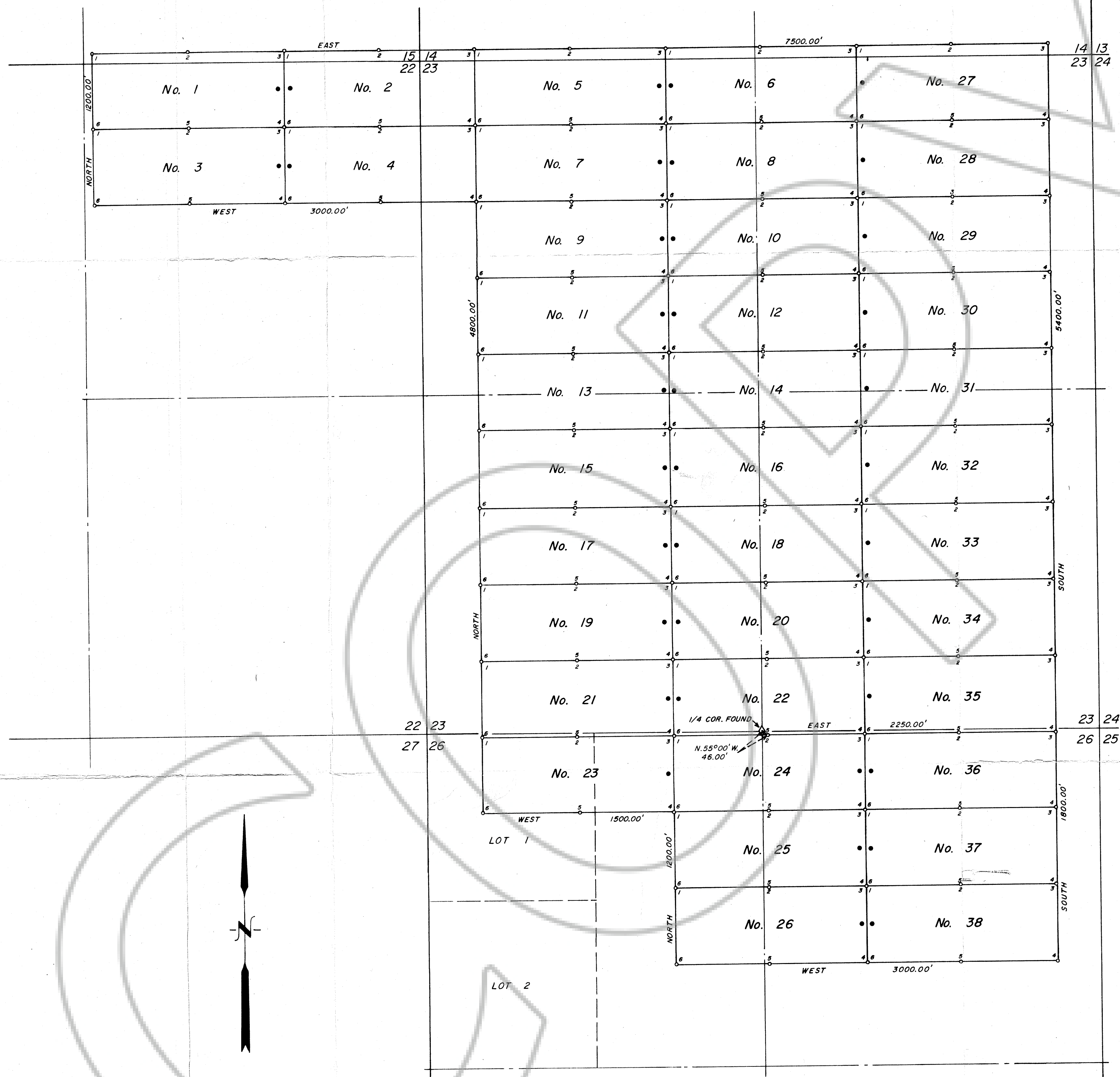


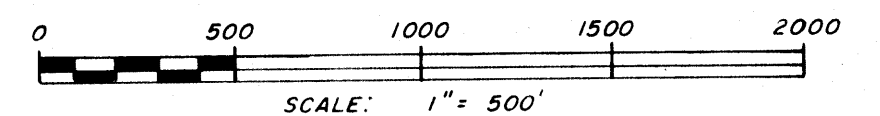
T. 24 N., R. 48 E., M. D. B. & M.



NOTES:

All Claims are 600' wide and 1500' long.
 All Discovery Monuments are 10' in from the end lines
 At all Corners, Side Centers and Discovery Monuments are 4" dia. x 4 1/2' long posts with aluminum tags denoting the appropriate corners.
 ○ = Corners & Side Centers
 ● = Discovery Monuments
 Z Nos. 1 through 23 located on July 21, 1980.
 Z Nos. 24 through 38 located on July 23, 1980.
 These Claims are located by Chevron Resources Company, A Div. of Chevron Industries, Inc. Agent for Chevron U.S.A. Inc. P.O. Box 4001 Golden, Colorado 80401
 There a total of 38 Claims.

Filed
 RECORDED AT THE REQUEST OF Chevron U.S.A. Inc.
 on October 3, 1980 at 10:23 mins. past 10 A.M.
 Book 1 of RECORDS OF
 EUREKA COUNTY, NEVADA. WILLIS A. DePAOLI Recorder
 File No. 76967 Fee \$570.00



MAP SHOWING THE
 Z UNPATENTED LODGE CLAIMS
 LOCATED BY
 CHEVRON RESOURCES COMPANY
 IN
 T. 24 N., R. 48 E., M. D. B. & M.
 EUREKA COUNTY, NEVADA

SURVEYED & MAPPED
 BY
 BOUNDY & FORMAN, INC.
 ELY, NEVADA
 JULY, 1980