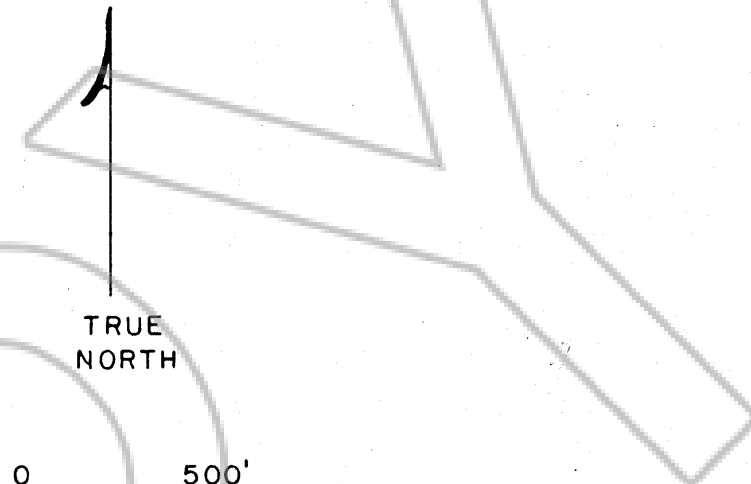
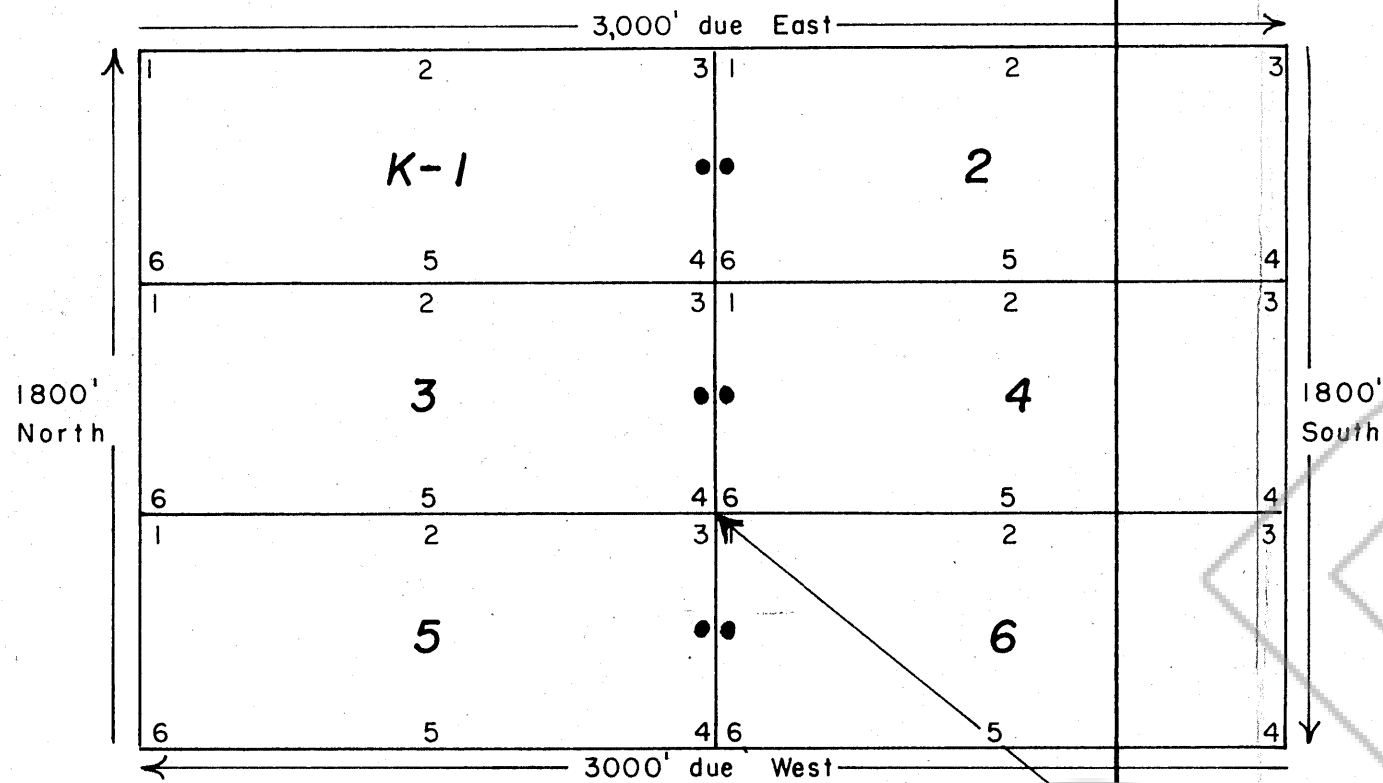


T. 24 N., R. 48 E.



**AMENDED MAP OF THE K1-6 LODGE
MINING CLAIMS**

Located in the Roberts Mining District of Eureka Co.
Nevada, Township 24 North, Range 48 East,
sections 22 & 23.

by
U.S. MINERALS EXPLORATION COMPANY INC.
12395 W 53rd. Ave Suite G 10
Arvada, Co. 80002

Location dates K 1-2 February 13, 1980
K 3-6 February 18, 1980

Location monument •

4,756' N 51° 18' 17" W from the south 1/4 corner
of section 23 to corner 1 of claim K6.

Filed
RECORDED AT THE REQUEST OF *U.S. Minerals Exploration Co.*
on *November 5, 1980* at *20* mins. past *10 A.* M. in
Book _____ of OFFICIAL RECORDS, page _____, RECORDS OF
EUREKA COUNTY, NEVADA. WILLIS A. DePAOLI Recorder
File No. *77695* Fee \$ *90.00*

22 23
27 26

23
26