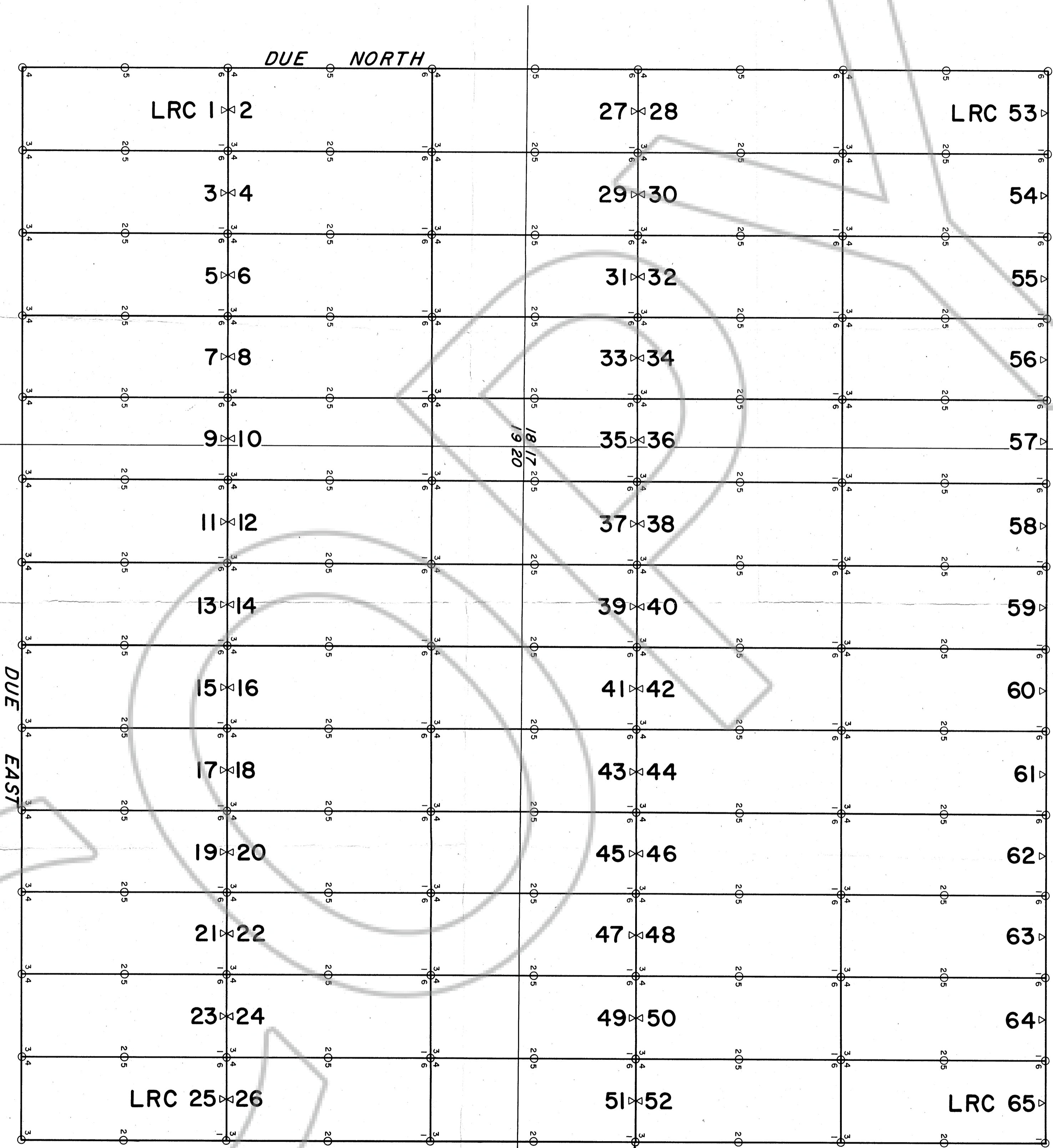


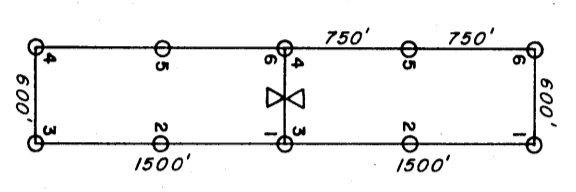
R. 53 E.

T. 19 N.



THE #1 COR. OF LRC 51/15
 APPROXIMATELY 230 FEET
 WEST AND 870 FEET NORTH
 OF THE SE CORNER OF
 SEC. 17, T. 19 N., R. 53 E.

TYPICAL CLAIM (1500' x 600')



O CORNER POST (4" x 4" PVC PIPE)
 Δ DISCOVERY MONUMENT (4" x 4" PVC PIPE)

CLAIM #	DATE STAKED
LRC 1-26	Nov. 6, 1980
LRC 27-52	Nov. 5, 1980
LRC 53-65	Nov. 7, 1980

Located by: B. S. Wycoff
 Agent for: SUPERIOR OIL CO.
 P.O. Box 12487
 Tucson, Arizona 85732

Filed AT THE REQUEST OF Superior Oil Co.
 on November 21, 1980, at 3:16 pm, pursuant to A.M. in
 EUREKA COUNTY, NEVADA, WILLIS A. D'PAOLI Recorder
 File No. 779662 Fax 975

THE SUPERIOR OIL COMPANY
 Minerals Division

LRC LODGE CLAIMS

Project and Location: 1-65
 EUREKA CO., NEVADA
 Scale: 1" = 500'
 Drawn by: E. A.
 Date: NOV. 19, 1980
 Revised by: []

779662