

Filed  
AT THE REQUEST OF AMERICAN SELCO INC  
on December 1, 1980, at 37 mins. past 8 P.M. in  
Book of OFFICIAL RECORDS, page RECORDS OF  
EUREKA COUNTY, NEVADA. WILLIS A. DePAOLI Recorder  
File No. 78045 Fee \$ 720.00

**AMERICAN SELCO INC.**

Claim map for Red 1 thru 48  
Unpatented mining claims  
Located in unsurveyed Sec. 21, 22, 23, 26, 27, T23N, R49E, MDM  
Eureka County, Nevada

The N.W. corner of Red 35 is located approximately 400' west  
of the N.W. corner of Sec. 26, T23N, R49E, MDM.

Claims filed by: American Selco  
90 West Grove Street  
Suite #100  
Reno, Nevada 89509

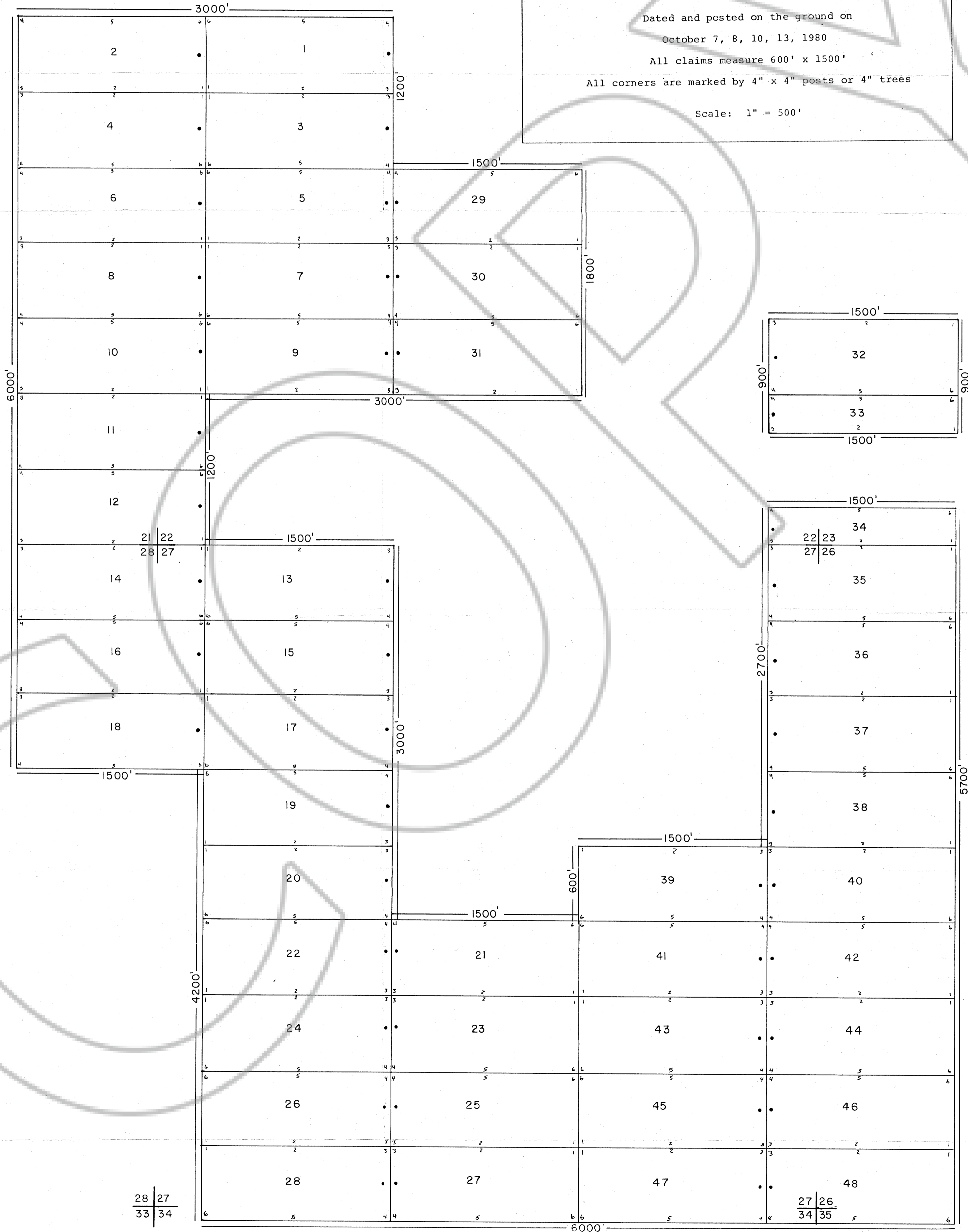
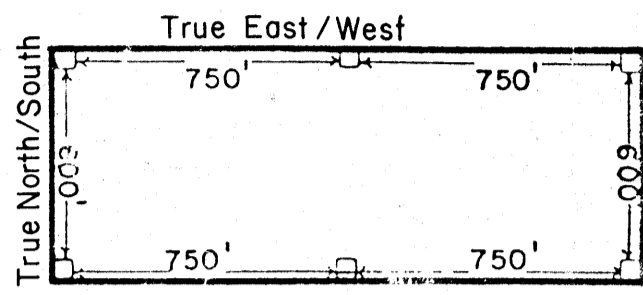
Dated and posted on the ground on  
October 7, 8, 10, 13, 1980

All claims measure 600' x 1500'

All corners are marked by 4" x 4" posts or 4" trees

Scale: 1" = 500'

All Claims Are Staked As Below



28 | 27  
33 | 34

27 | 26  
34 | 35