

T. 24 N., R. 50 E.

T. 24 N., R. 51 E.

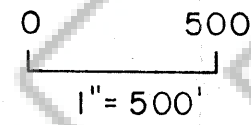
### MAP OF THE LB 27-38 LODE MINING CLAIMS

Located in an unknown mining district, Eureka, Co., Nevada, in Township 24 North, Range 50 East, sections 25, 26, 35 & 36, Township 24 North, Range 51 East, sections 30 & 31, by

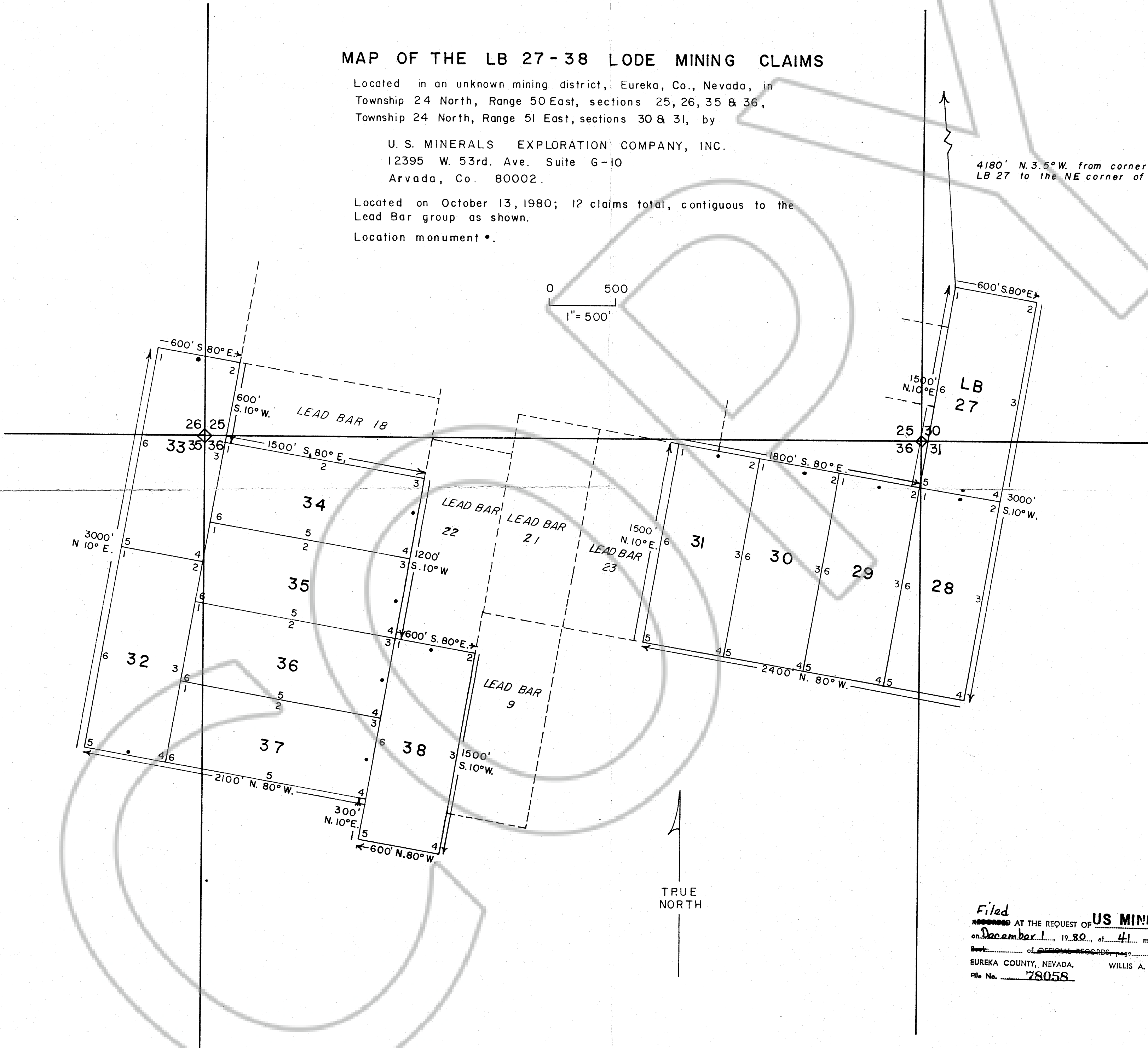
U. S. MINERALS EXPLORATION COMPANY, INC.  
12395 W. 53rd. Ave. Suite G-10  
Arvada, Co. 80002.

Located on October 13, 1980; 12 claims total, contiguous to the Lead Bar group as shown.

Location monument •.



4180' N. 3.5° W. from corner 1 of claim LB 27 to the NE corner of section 25



Filed  
AT THE REQUEST OF **US MINERALS EXPL CO**  
on December 1, 1980, at 41 mins. past 9 A.M. in  
Book \_\_\_\_\_ of OFFICIAL RECORDS, page \_\_\_\_\_, RECORDS OF  
EUREKA COUNTY, NEVADA. WILLIS A. DePAOLI Recorder  
File No. 78058 Fee \$ 180.00