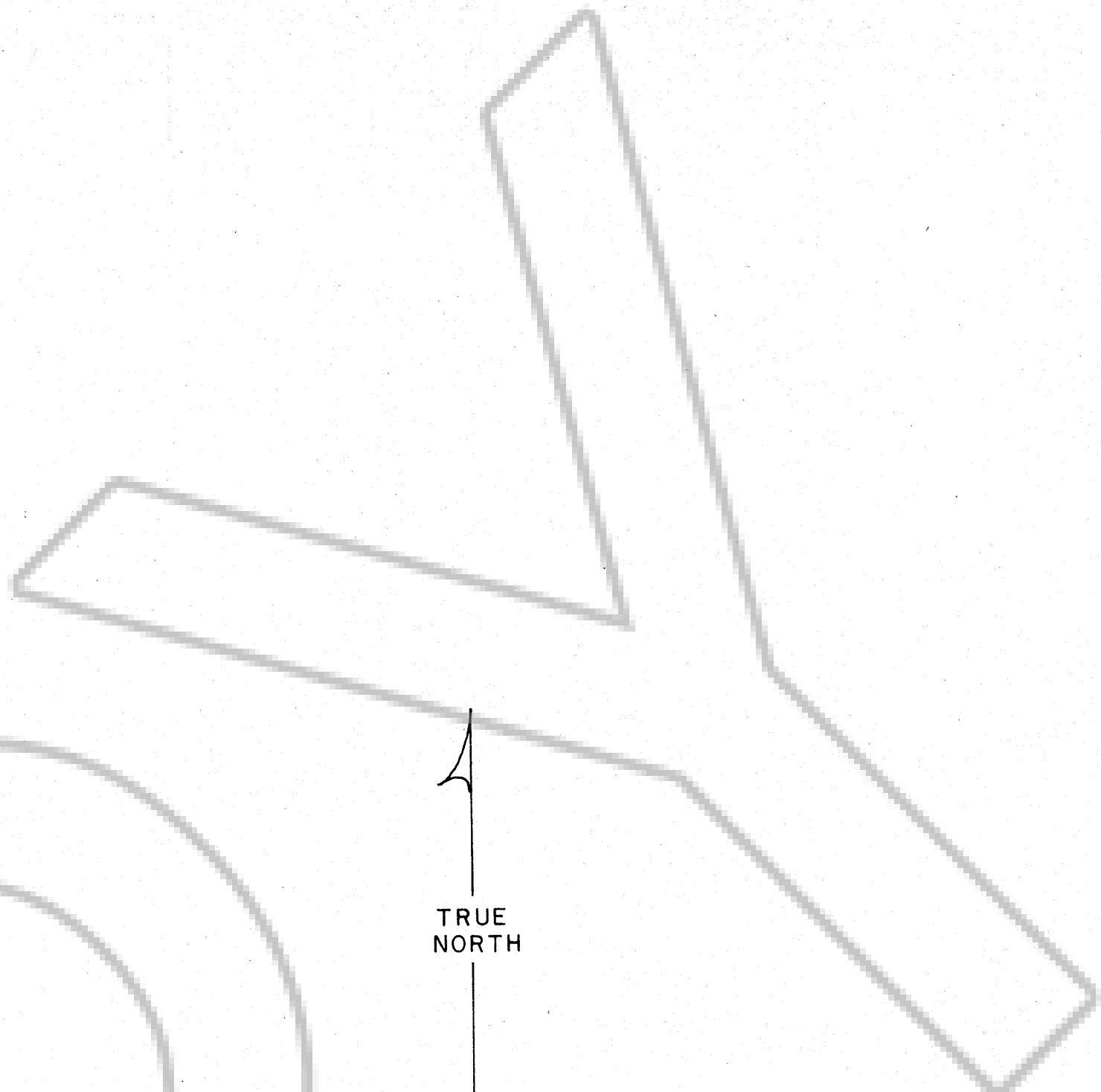
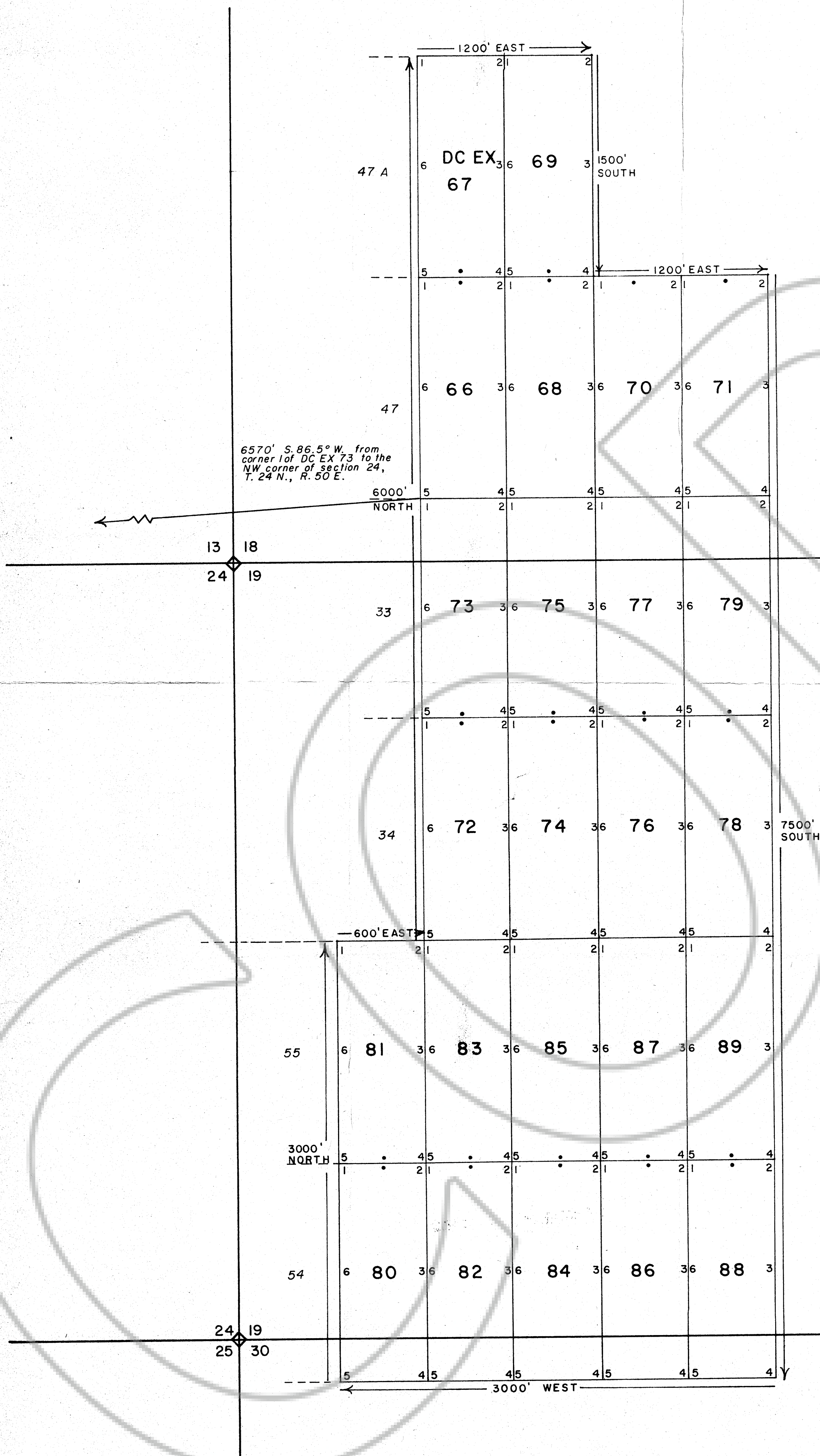


T. 24 N., R. 50 E.

T. 24 N. R. 51 E.



TRUE NORTH

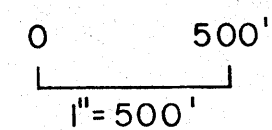
**MAP OF THE DC EX 66-89 LODE MINING CLAIMS**

Located in an unknown mining district, Eureka Co., Nevada, in Township 24 North, Range 51 East, sections 18, 19 & 30 by

U. S. MINERALS EXPLORATION COMPANY, INC.  
12395 W. 53rd Ave. Suite G-10  
Arvada, Co. 80002

Located on September 23, 1980; 24 claims total; contiguous to DC EX 9-65 group.

Location monument •.



Filed  
RECORDED AT THE REQUEST OF **US MINERALS EXPL CO**  
on December 1, 1980, at 43 mins. past 9 A.M. In  
of OFFICIAL RECORDS, page       , RECORDS OF  
EUREKA COUNTY, NEVADA. WILLIS A. DePAOLI Recorder  
File No. 78083 Fee \$ 360.00