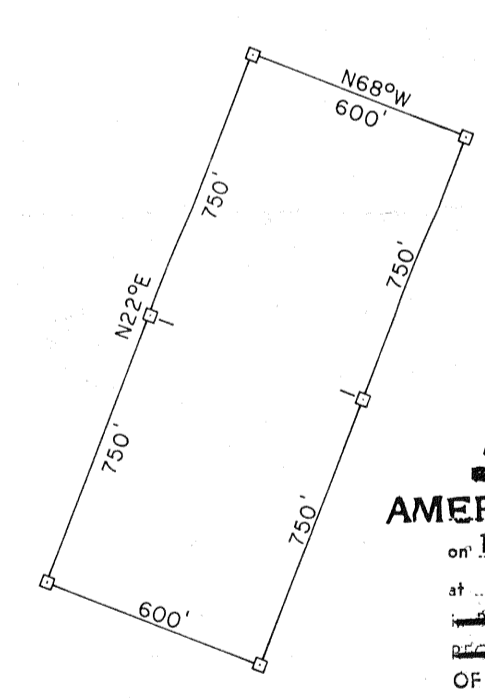


ALL CLAIMS ARE STAKED AS BELOW



Filed AT THE REQUEST OF  
**AMSELCO MINERALS INC.**  
 on February 18, 1981  
 at 59 miles, post 10 A.M.  
 RECORDS  
 OF EUREKA COUNTY, NEVADA  
 WILL A. DiPAOLI  
 Recorder  
 File No. 78953 Rev. 1-3-80

○ DENOTES LOCATION MONUMENT

**AMSELCO MINERALS INC.**

Claim Map for BP 1 thru 26  
 Unpatented Mining Claims  
 Located in unsurveyed sections 8, 17, 18, 19, 20, T18N, R52E  
 Eureka County, Nevada

The NW corner (#6 corner) of BP 26 is located approximately  
 7,498 feet N16°W from Combs Peak VABM 8631

Claims filed by:  
 Amselco Minerals Inc.  
 90 West Grove Street, Suite 100  
 Reno, Nevada 89509

Dated and posted on the ground on December 23, 26, 27, 1980

All claims measure 600' x 1500'

All claims are marked by 4' x 4' posts or 4" trees