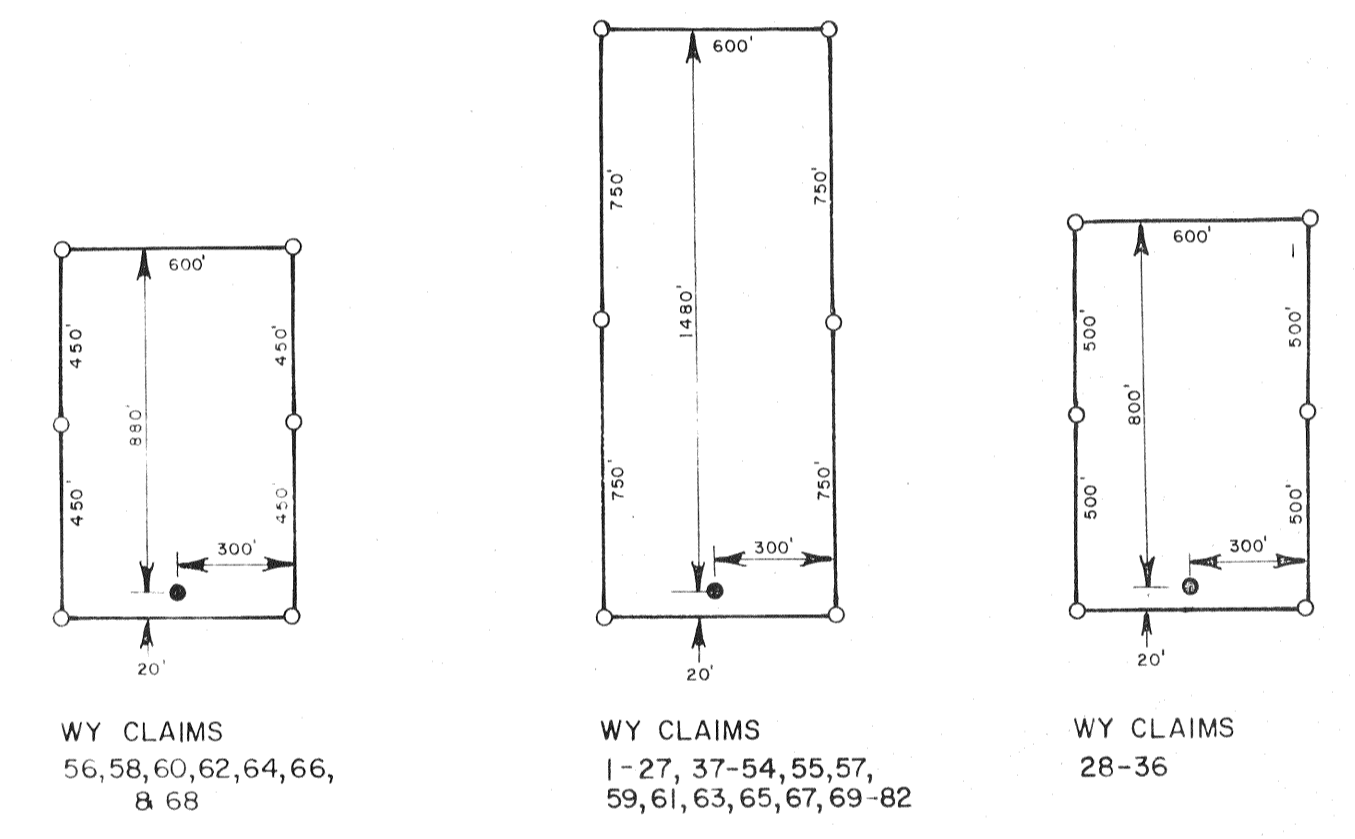


APPROXIMATE BOUNDARY  
U.S.G.S. QUAD-DUMPHY, NEVADA 1957

LANDER Co.  
EUREKA Co.

T.31N., R.47, 48E., M.D.M.



TYPICAL CLAIMS

LEGEND

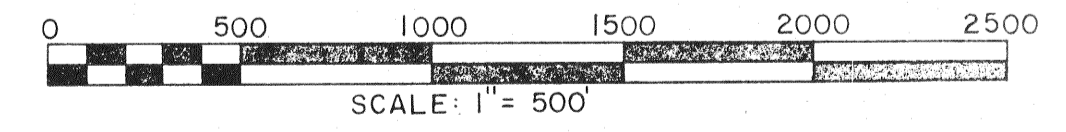
- ◆ FOUND SECTION CORNER
- ◆ FOUND 1/4 SECTION CORNER
- CLAIM POST 4" Dia. x 5'-0" P.V.C. pipe claim post w/Aluminum Tag Appropriately Marked For Corner.
- LOCATION MONUMENT 4" Dia. x 5'-0" P.V.C. pipe claim post w/Location Notice

ALL MONUMENTATION COMPLETED: JANUARY 21, 1981

CLAIM LOCATION DATES

WY Nos. 1-27 located on JANUARY 13, 1981
WY Nos. 28-84 located on JANUARY 16, 1981

THERE IS A TOTAL OF 84 CLAIMS.  
1-68 are in LANDER County.  
69-70 are in LANDER and EUREKA Counties.  
71-84 are in Eureka County.



Filed at the request of  
**CHEVRON USA INC**  
Date: February 23, 1981  
Time: 10:32 A.M.

File No.: 78987  
*William A. McPee*  
County Recorder  
Fee \$240.00

NO	BY	DATE	DESCRIPTION	CHK'D	APP'D
REVISIONS					
DRAWN BY: W.A.S.					
APPROVED BY: <i>Bm</i>					
JOB NO: 3392-002					
DATE: JAN 1981					

MAP  
OF  
**WY 1-84 LOSE CLAIMS**  
FOR  
**CHEVRON U.S.A., INC.**  
P.O. BOX 4001  
**GOLDEN, COLORADO 80401**

**C HILTON ENGINEERING** 81010  
421 COURT STREET ELKO, NEVADA