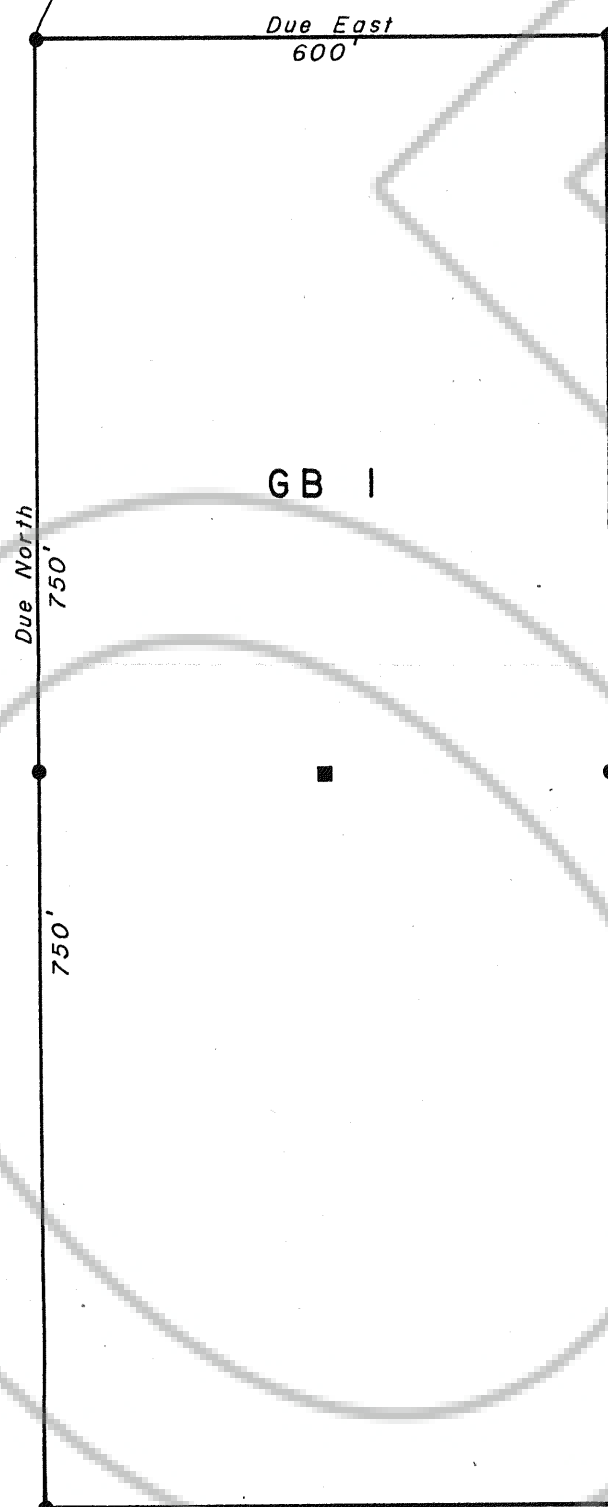


the claim is located in Secret Canyon
with the NW corner being approximately
6771 feet S 12° W from Murray Spring



Filed
RECORDED AT THE REQUEST OF Anne Pate
on February 27, 19 81, at 22 mins. past 11 A.M. in
Book of OFFICIAL RECORDS, page RECORDS OF
EUREKA COUNTY, NEVADA. WILLIS A. DePAOLI Recorder
File No. 78999 Fee \$ 15.00

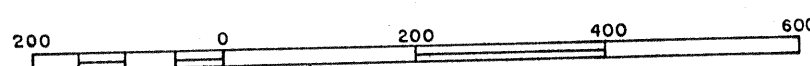
TRV EXPLORATION (NEV) INC.
P.O. Box 442 Eureka, Nevada

GB 1 Lode Claim

protracted Section 22 & 23, T18N, R53E,
MDB & M, Nevada

located: February 2, 1981

scale 1" = 200'



78999