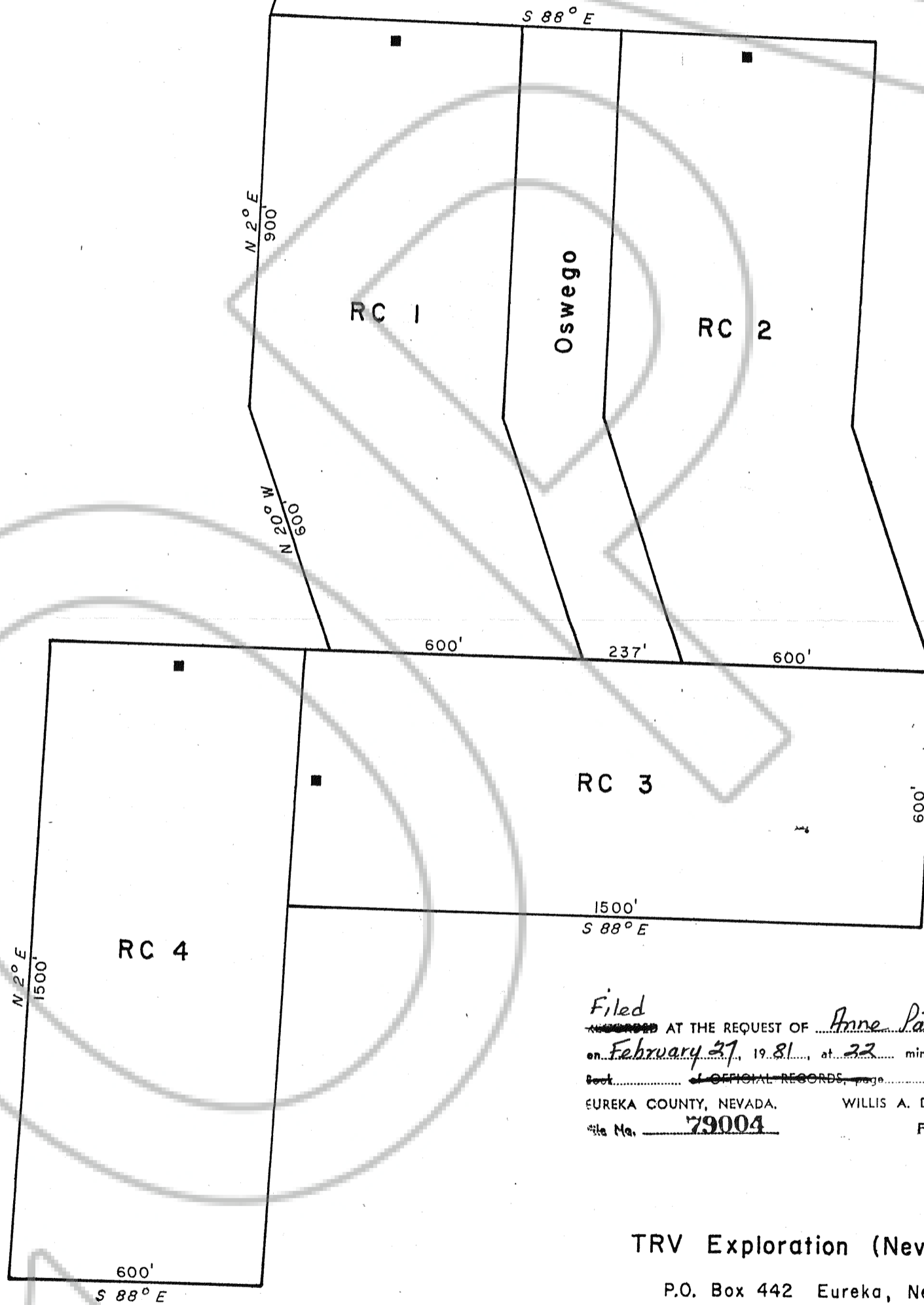


claims are located in Rocky Canyon  
with the NW corner of RC 1 being  
approximately 3750 feet N 28° E of  
Ratto Spring



Filed  
AT THE REQUEST OF Anne Pate  
on February 27, 1981, at 22 mins. past 11 A.M.  
Book OFFICIAL RECORDS, page RECORDS O  
EUREKA COUNTY, NEVADA. WILLIS A. DePAOLI Recorder  
File No. 79004 Fee \$ 60.00

TRV Exploration (Nevada) Inc.

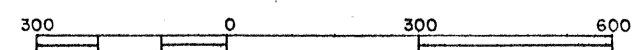
P.O. Box 442 Eureka, Nevada

RC 1 thru RC 4 Lode Claims

protracted Section 22, T18 N, R 53 E  
MDB & M, Nevada

located: January 23, 1981

scale 1" = 300'



79004