

**AS AMERICAN SELCO INC.**

Claim map for St. PAT 420 - 439  
433 - 455, 460 - 469, 480 - 489, 500 - 508

Unpatented Mining Claims  
Located in unsurveyed sections 4, 5, 6, 7, 8, T17N, R52 E  
Eureka County, Nevada

The SW corner (#1 corner) of St. PAT 420 is located approximately  
10,500 feet N 46° E from Bench Mark B.M. 6478, T17N, R51E, M.D.M

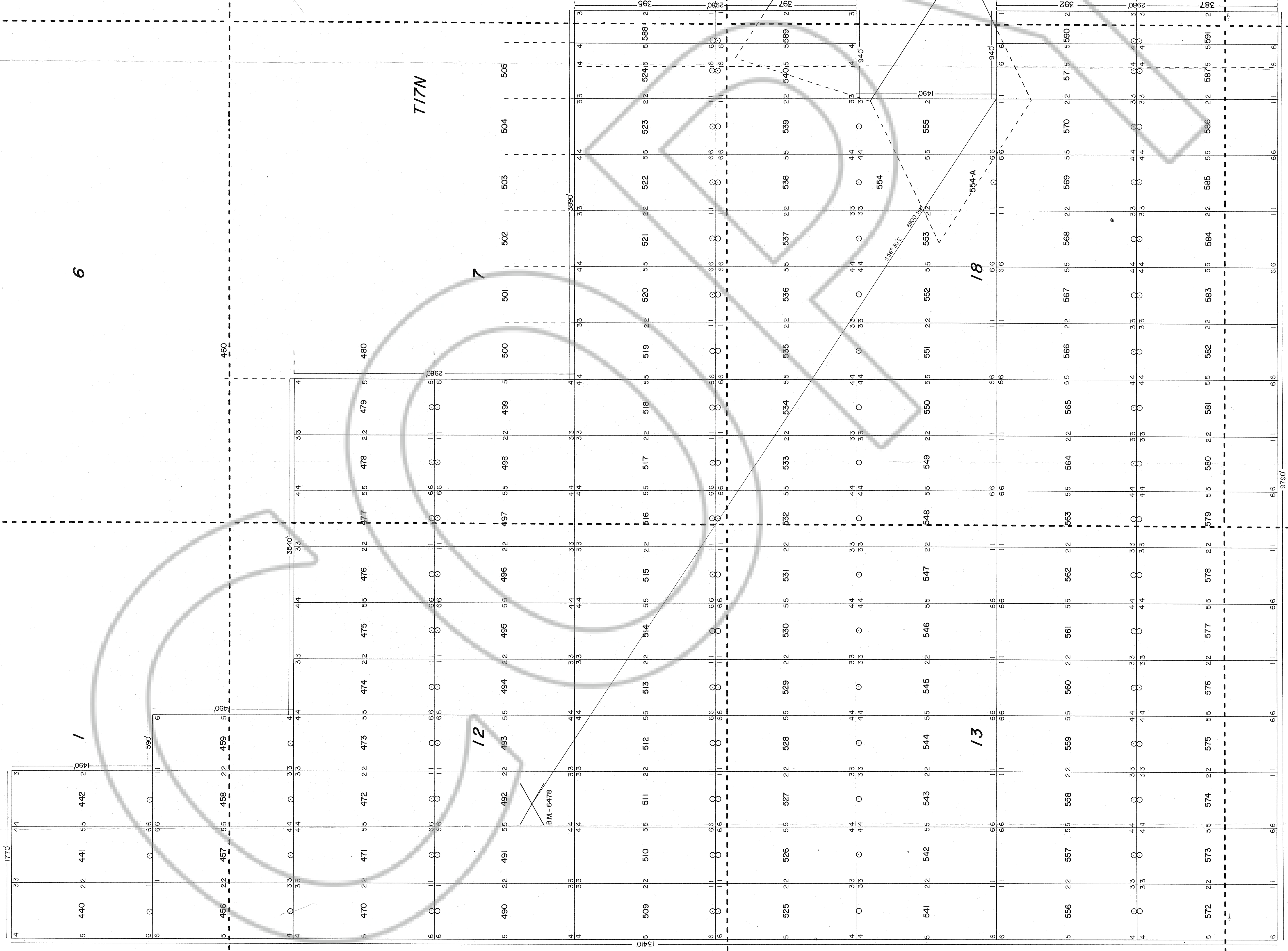
Claims filed by:  
American Selco Inc.  
90 West Grove Street, Suite 100  
Reno, Nevada 89509

All claims measure 600' x 1500'  
All claims marked by 4" x 4" posts or 4" trees

Dated and posted on the ground  
March 29 and 30, 1981

Filed  
RECORDED AT THE REQUEST OF American Selco Inc.  
on June 9, 1981, at 11:28 a.m. per 11 A.M. in  
Book \_\_\_\_\_ of OFFICIAL RECORDS, RECORDS OF  
EUREKA COUNTY, NEVADA, WILLIS A. DUNFORD Recorder  
No. 80692 Fee \$ 330.00





6

T17N

12

13

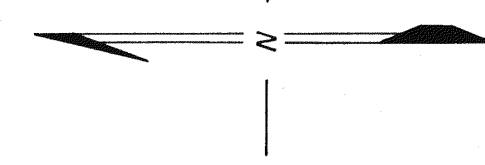
18

24

R51E

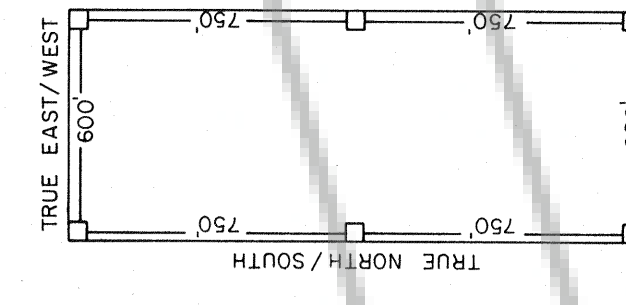
R52E

19



SCALE 1" = 500'  
0 500 1000 1500 FEET

ALL CLAIMS ARE STAKED AS BELOW



RECORDED AT THE REQUEST OF American Selco, Inc.  
BY WILLIS A. DRYVALI REGISTERED PROFESSIONAL SURVEYOR  
STATE OF NEVADA  
No. 12,645

**AS AMERICAN SELCO INC.**  
Sh. 2 of 2

Claim map for ST PAT. 440-442  
456-459, 470-479, 490-499, 509-554, 554A, 555-591  
Unpatented Mining Claims

Located in unsurveyed sections 1, 12, 13, 24, T17N, R51E, and in  
unsurveyed sections 6, 7, 18, 19, T17N, R52E, M.D.M.  
Eureka County, Nevada

The S.E. corner (#1 corner) of ST PAT 555 is located approximately  
8900 feet S56°30'E of Bench M. 6478, T17N, R51E

Claims filed by:  
American Selco, Inc.  
90 West Grove Street, Suite 100  
Reno, Nevada 89509

All claims measure 600' x 1500'  
All claims marked by 4" x 4" posts or 4" trees  
Dated and posted on the ground  
27-30 March, 1981