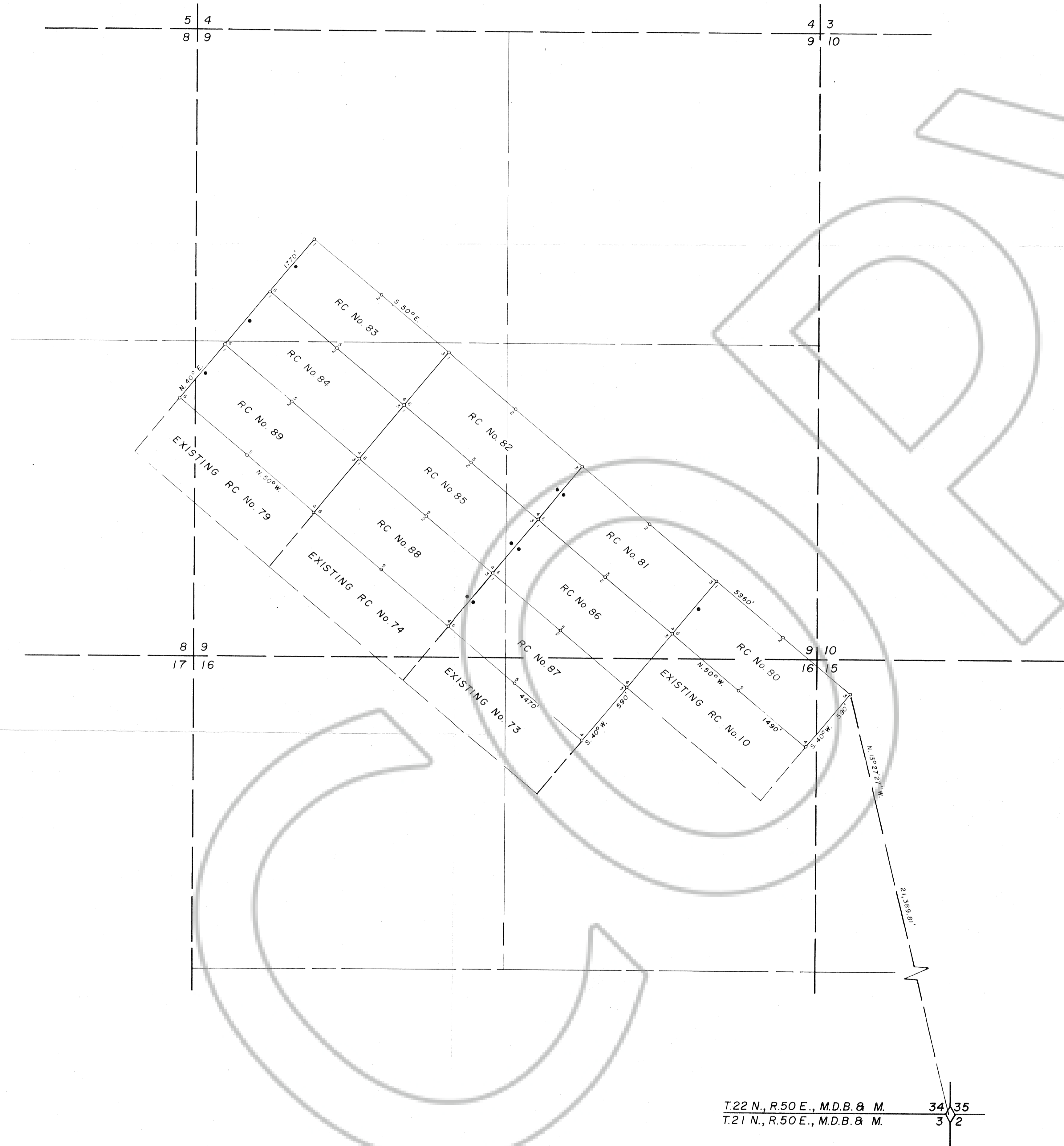
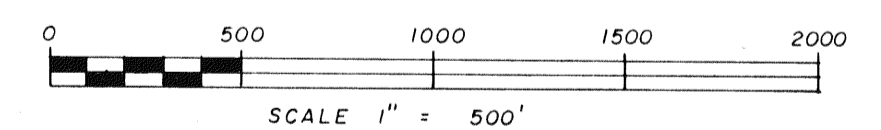


T. 22 N., R. 50 E., M.D.B. & M. (Partially Unsurveyed)



NOTES

1. All Claims are 600' wide and 1500' long with the Discovery Monuments being 10' from the endlines.
2. At all Corners, Side Centers and Discovery Monuments are 4" diameter x 4 1/2' long posts with aluminum tags denoting the appropriate corners.
3. o = Corner and Side Center posts
• = Discovery Monuments
4. RC Nos. 80 through 89 located on June 4, 1981
5. These claims are located by: Chevron Resources Company, a division of Chevron Industries, Inc.
Agent for Chevron U.S.A. Inc.
P.O. Box 4001
Golden, Colorado 80401
6. There are a total of 10 claims.



Filed
AT THE REQUEST OF Chevron Resources Co.
on July 20, 1981, at 57 mins. past 11 A.M. in
Book 81036 of OFFICIAL RECORDS RECORDS OF
EUREKA COUNTY, NEVADA. WILLIS A. DePAOLI Recorder
File No. 81036 Fee \$ 150.00

MAP SHOWING
RC LODE CLAIMS NOS. 80-89
LOCATED BY
CHEVRON RESOURCES COMPANY
IN
T. 22 N., R. 50 E., M.D.B. & M.
EUREKA COUNTY, NEVADA

SURVEYED & MAPPED
BY
BOUNDY & FORMAN, INC.
ELY, NEVADA
JUNE, 1981