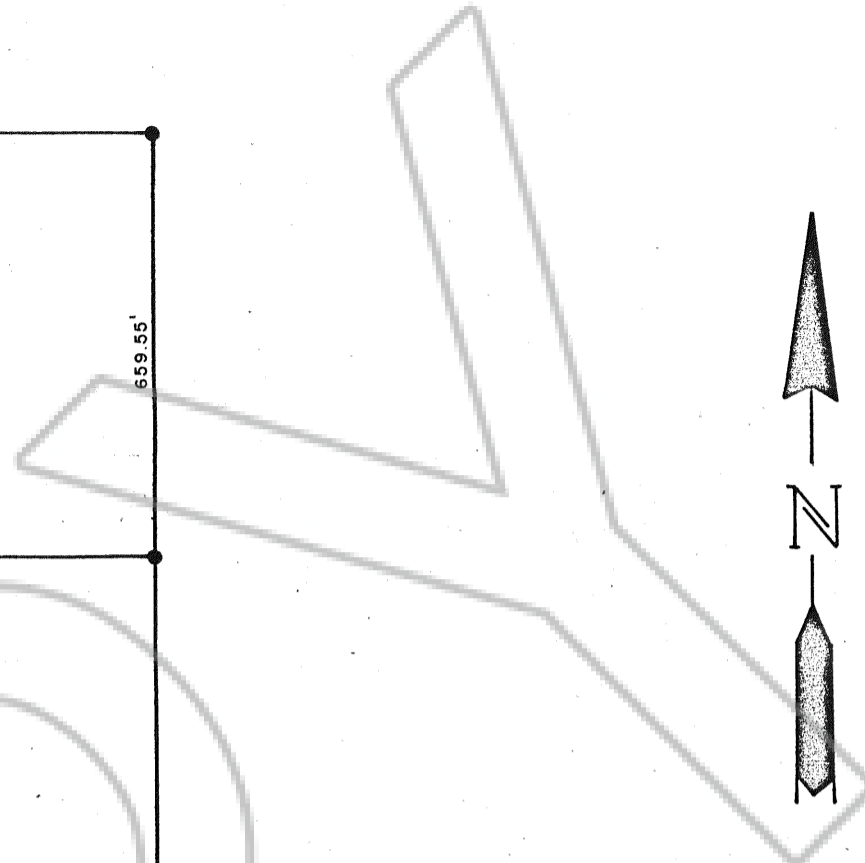


Section 22   Section 23  
 Section 27   Section 26

GEDDES PLACER

1319.09'

659.55'



**GEDDES PLACER**

N 1/2, NE 1/4, SW 1/4, protracted Sec. 23  
 T18N, R53E MDB&M  
 Eureka County, Nevada

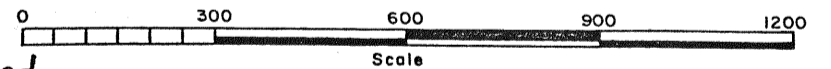
Size of claim: 20 acres

Scale: 1" = 300'

Date: July 24, 1981

Located by:

TRV Exploration (Nevada) Inc.  
 P.O. Box 442  
 Eureka, Nevada



Filed  
 RECORDED AT THE REQUEST OF Anne Pate  
 on August 18, 1981, at 23 mins. past 10 A. M.  
 Book \_\_\_\_\_ RECORDS OF  
 EUREKA COUNTY, NEVADA. WILLIS A. DePAOLI Recorder  
 Case No. 81419 Fee \$ 20.00

81419