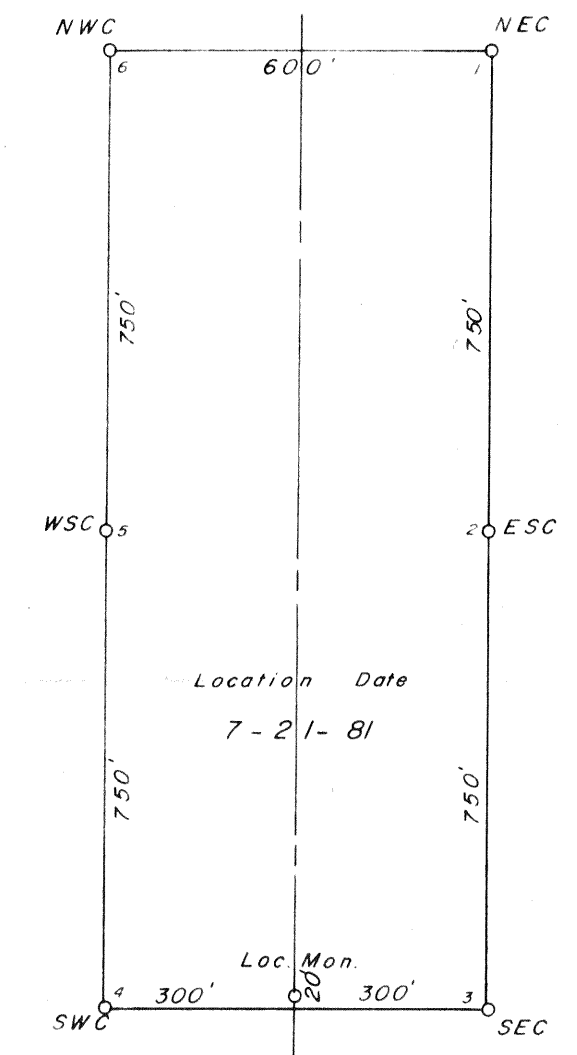
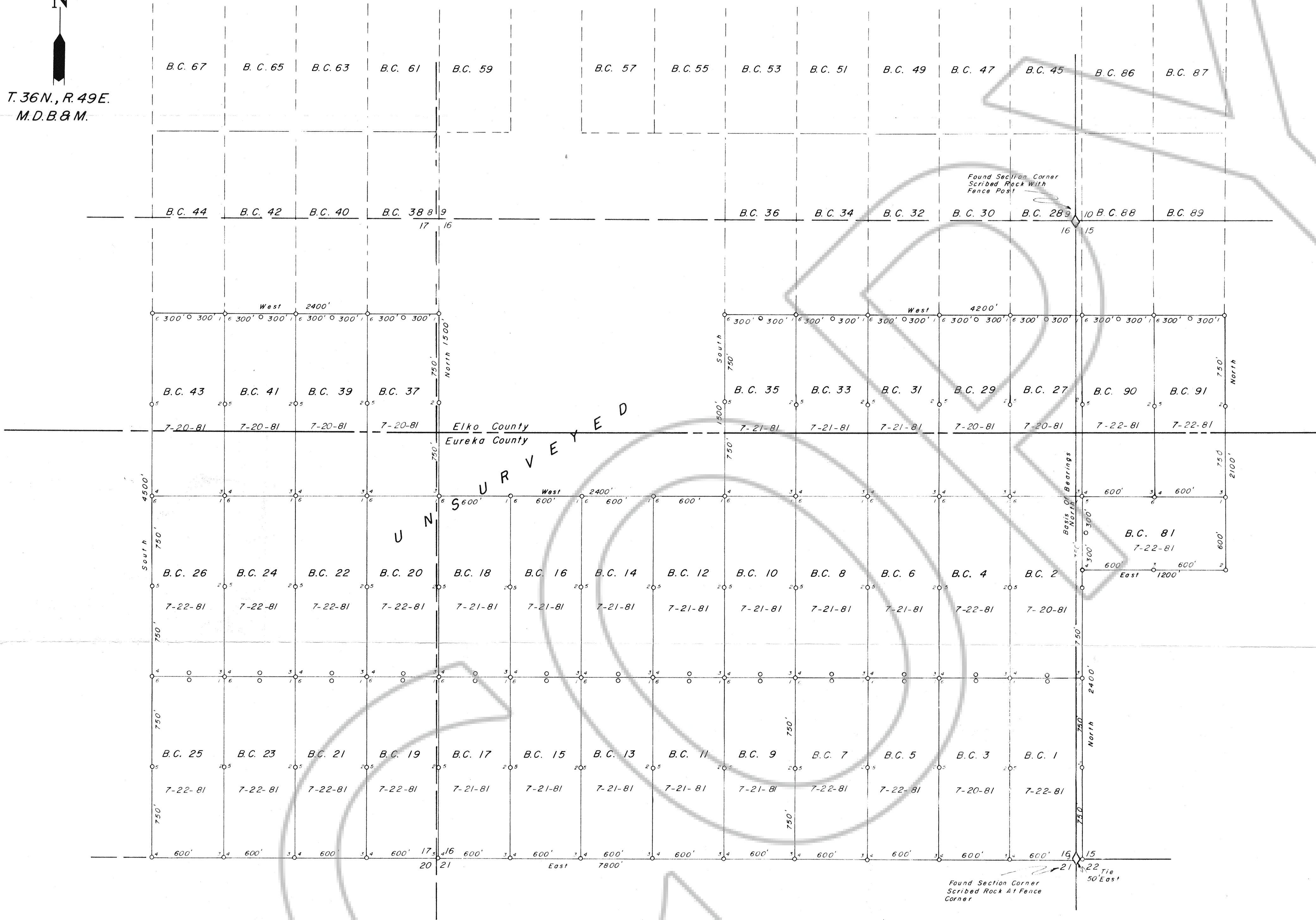


T. 36 N., R. 49 E.  
M.D.B. & M.



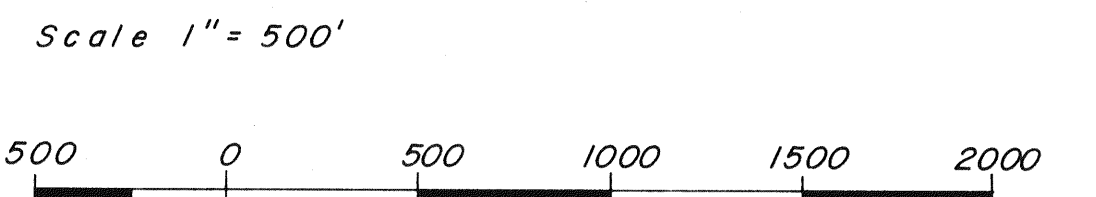
Typical Lode Claim

I, John H. Milton III, do hereby certify that this is an accurate plat of a survey made by me during July, 1981 at the request of MAPCO Minerals Corp.

John H. Milton III  
Registered Land Surveyor Nevada 5271  
8-10-81

Locators: MAPCO Minerals Corp.  
Building # 19  
1667 Cole Blvd.  
Golden, Colorado 80401

Filed AT THE REQUEST OF Mapco Minerals Corp.  
on August 26, 1981, at 3:31 mins. past 11 A.M. in  
of OFFICIAL RECORDS, RECORDS OF  
EUREKA COUNTY, NEVADA. WILLIS A. DePAOLI Recorder  
File No. 81604 Fee \$ 570.00



NOTES: Basis of Bearings Taken From G.L.O. Plat Of 1916.  
o Indicates 4 1/2" Diameter Plastic Pipe With A Scribed Metal Tag

Desert Mountain Surveying Company  
146 West Second Street  
Winnemucca, Nevada 89445

81604  
Map  
Lode Mining Claims  
B.C. 1 Thru 27, 29, 31, 33, 35, 37, 39,  
41, 43, 81, 90 & 91  
For MAPCO Minerals Corp.  
Within T. 36 N., R. 49 E. M. D. B. & M.  
Eureka County 81604 Nevada