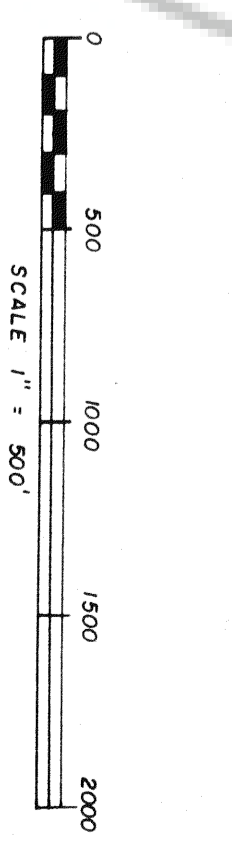


NOTES.

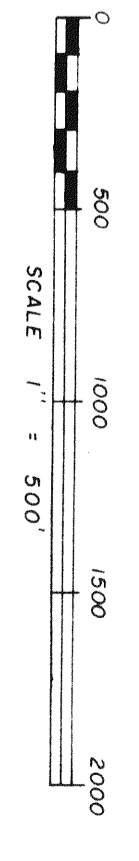
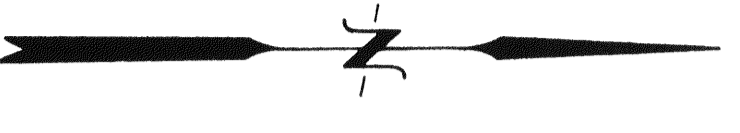
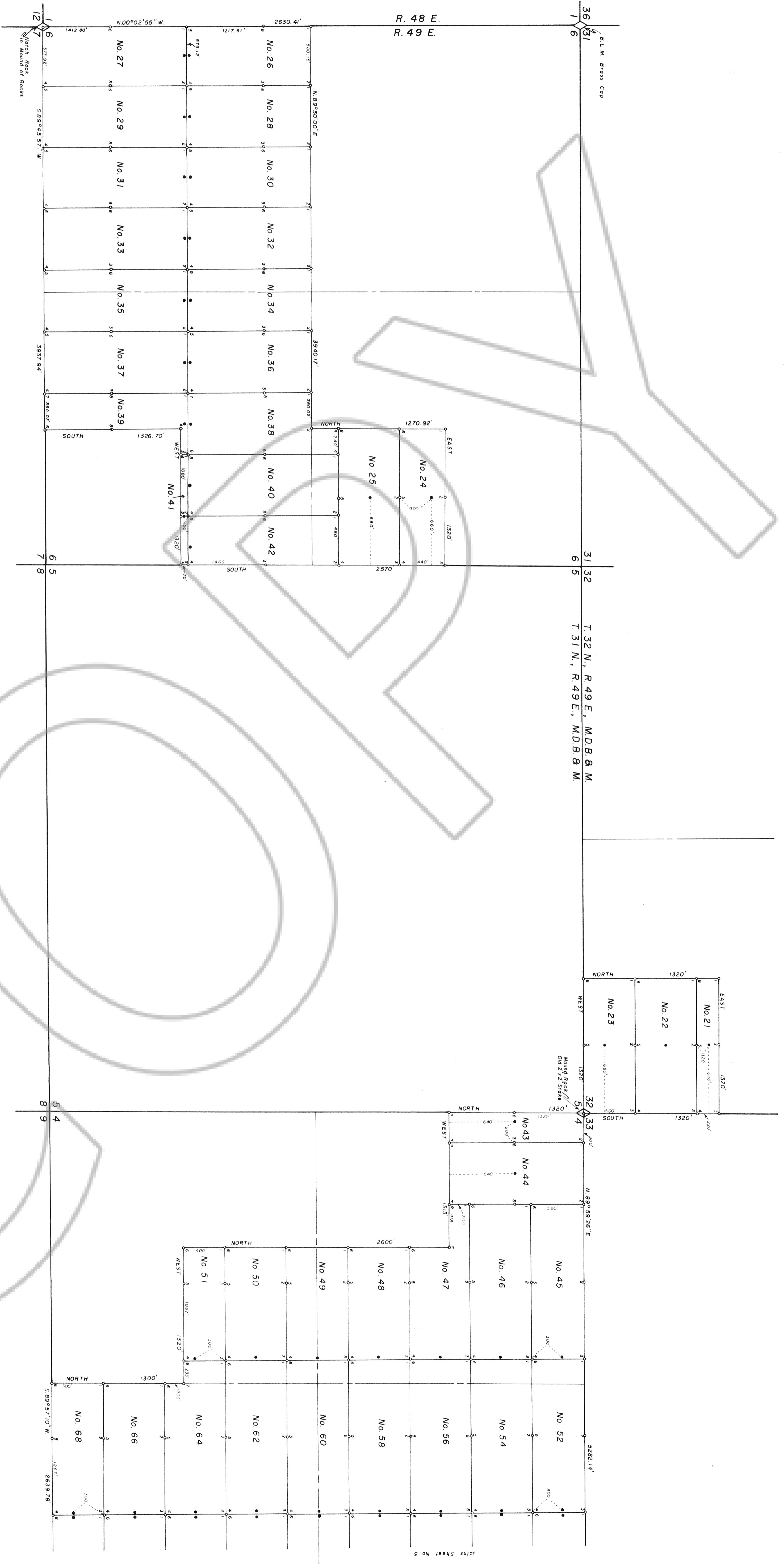
1. All claims are 600' wide and 1500' long with the Discovery Monuments being 10' from the endlines unless otherwise noted.
2. At all Corners, Side Centers and Discovery Monuments are 4" diameter x 4 1/2" long posts with aluminum tags denoting the appropriate corners.
3. ○ = Corner and Side Center posts
● = Discovery Monuments
4. RAG Nos 1-16 located on June 8, 1981
RAG Nos 17-20 & 70-93 located on June 9, 1981
RAG Nos 94-114 located on June 10, 1981
RAG Nos 21-23 & 38-69 located on June 11, 1981
RAG Nos 24-37 & 115-123 located on June 12, 1981
RAG No. 124 located on June 17, 1981
RAG No. 125 located on June 22, 1981
5. These claims are located by: Chevron Resources Company, a Division of Chevron Industries, Inc. Agent for Chevron U.S.A. Inc. P.O. Box 4001 Golden, Colorado 80401
6. There are a total of 125 claims.



MAP SHOWING
RAG LODE CLAIMS NOS. 1 - 125
IN
T. 31 & 32 N., R. 49 E., M. D.B. & M.
EUREKA COUNTY, NEVADA
FOR
CHEVRON RESOURCES COMPANY

SURVEYED & MAPPED
BY
BOUNDARY & FORMAN, INC.
E.V. NEPORA
AUGUST, 1981

FILED AT THE REQUEST OF **CHEVRON RESOURCES CO**
 on Sept. 2 1981, at SL office, part of ALM
 EUREKA COUNTY RECORDS OF
 WILLIS A. DEPAOLI Register
 No. 81882 Fee \$ 3.00



SHEET NO. 2 OF 3 SHEETS

MAP SHOWING

RAAG LODGE CLAIMS NOS. 1 - 125

T. 31 & 32 N., R. 49 E., M.D.B. & M.
EUREKA COUNTY, NEVADA

FOR

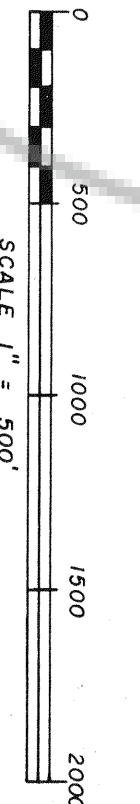
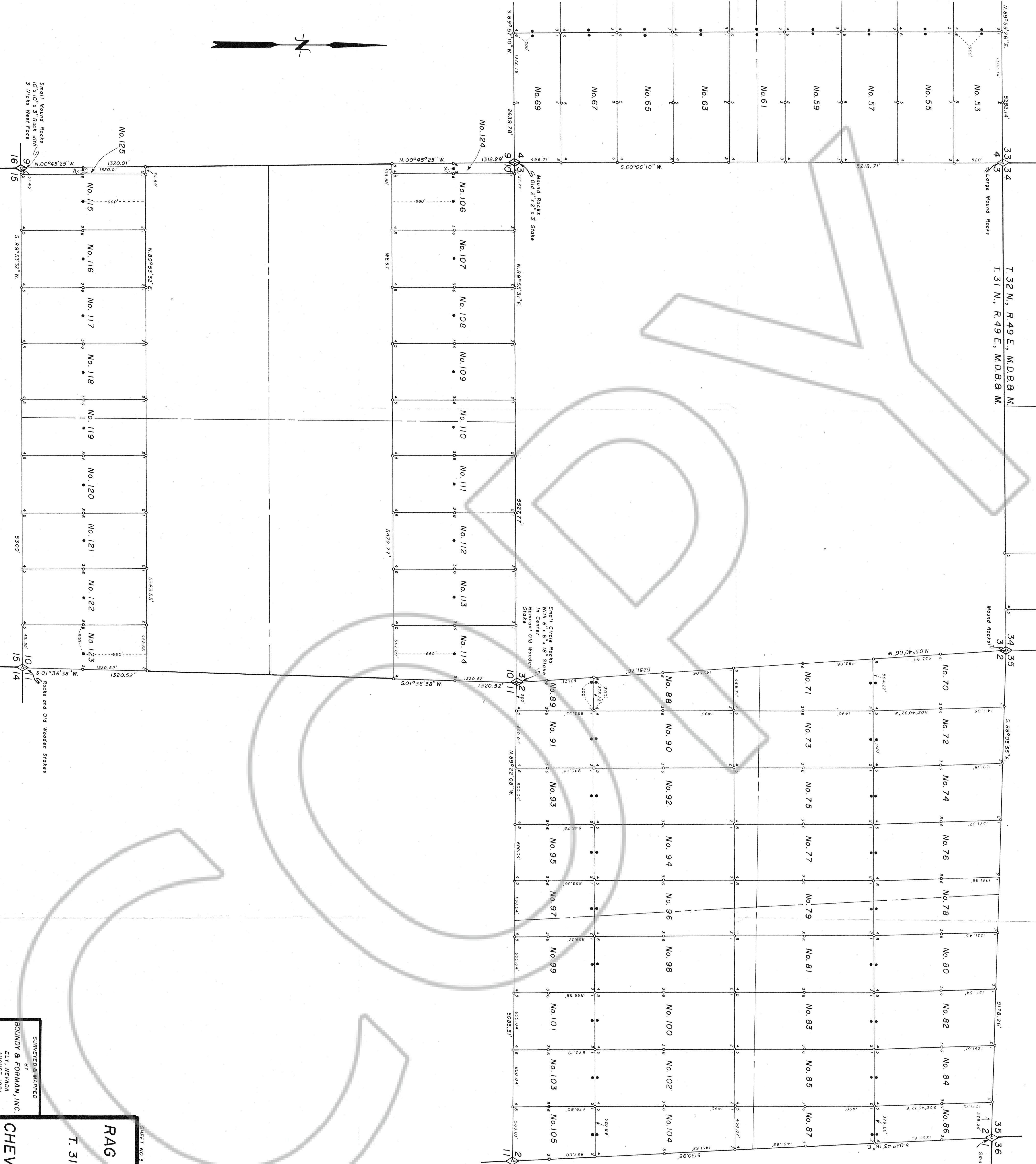
CHEVRON RESOURCES COMPANY

AT THE REQUEST OF
CHEVRON RESOURCES CO
SURREA COUNTY, NEVADA
WILLIE A. DEPAOLI, Register
Map No. **81882**
Fee \$ **400**

SURVEYED & MAPPED
BY
BOUNDY & FORMAN, INC.
ELY, NEVADA
AUGUST, 1981

T. 32 N., R. 49 E., M.D.B. & M.
T. 31 N., R. 49 E., M.D.B. & M.

Joins Sheet No. 1



MAP SHOWING
RAG LODGE CLAIMS NOS. 1 - 125
 IN
 T. 31 & 32 N., R. 49 E., M.D.B. & M.
 EUREKA COUNTY, NEVADA

FOR
CHEVRON RESOURCES COMPANY

FILED AT THE REQUEST OF CHEVRON RESOURCES CO
 BY S. P. L. at 5:11 p.m. on 8/11/82
 EUREKA COUNTY, NEVADA
 WILLIS A. DEWALL Register
 Fee \$ 97.50

SURVEYED & MAPPED
 BY
BOUNDY & FORMAN, INC.
 ELY, NEVADA
 AUGUST, 1981