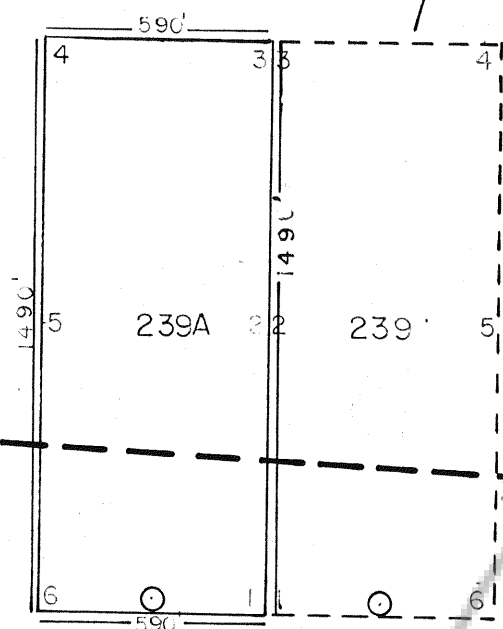


PREVIOUSLY LOCATED LAKE CLAIM



3 | 2
10 | 11 T18N

R52E

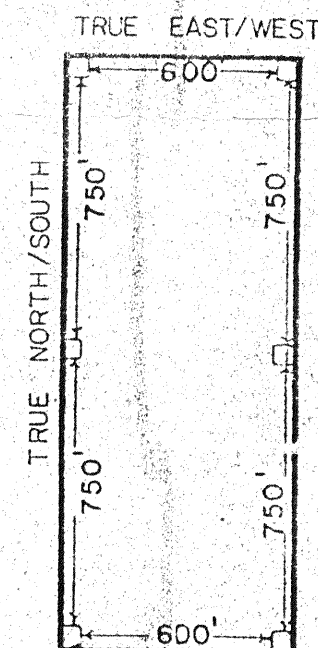
Filed
 RECORDED AT THE REQUEST OF **AMERICAN SELCO INC**
 on September 4, 1981, at 59 mins. past 11 A.M. In
 Book _____ of OFFICIAL RECORDS, page _____, RECORDS OF
EUREKA COUNTY, NEVADA. WILLIS A. DePAOLI Recorder
 File No. 81897 Fee \$ 15.00

81897

SCALE 1" = 500'



ALL CLAIMS ARE STAKED AS BELOW



○ DENOTES LOCATION MONUMENT

AMERICAN SELCO INC.

Claim map for Lake 239A
 Unpatented Mining Claims
 Located in unsurveyed sections 3 + 10 T18N R52E, MDM
 Eureka County, Nevada

The number one corner of Lake 239A is the
 common corner number one of the
 previously located Lake 239

Claims filed by:
 American Selco Inc.

90 West Grove Street, Suite 100
 Reno, Nevada 89509

All claims measure 600' x 1500'.
 All claims marked by 4" x 4" posts or 4" trees.
 Dated + posted on the ground July 7, 1981.