

SECTION 17, T.20N., R.53E. M.D.MER. NEVADA

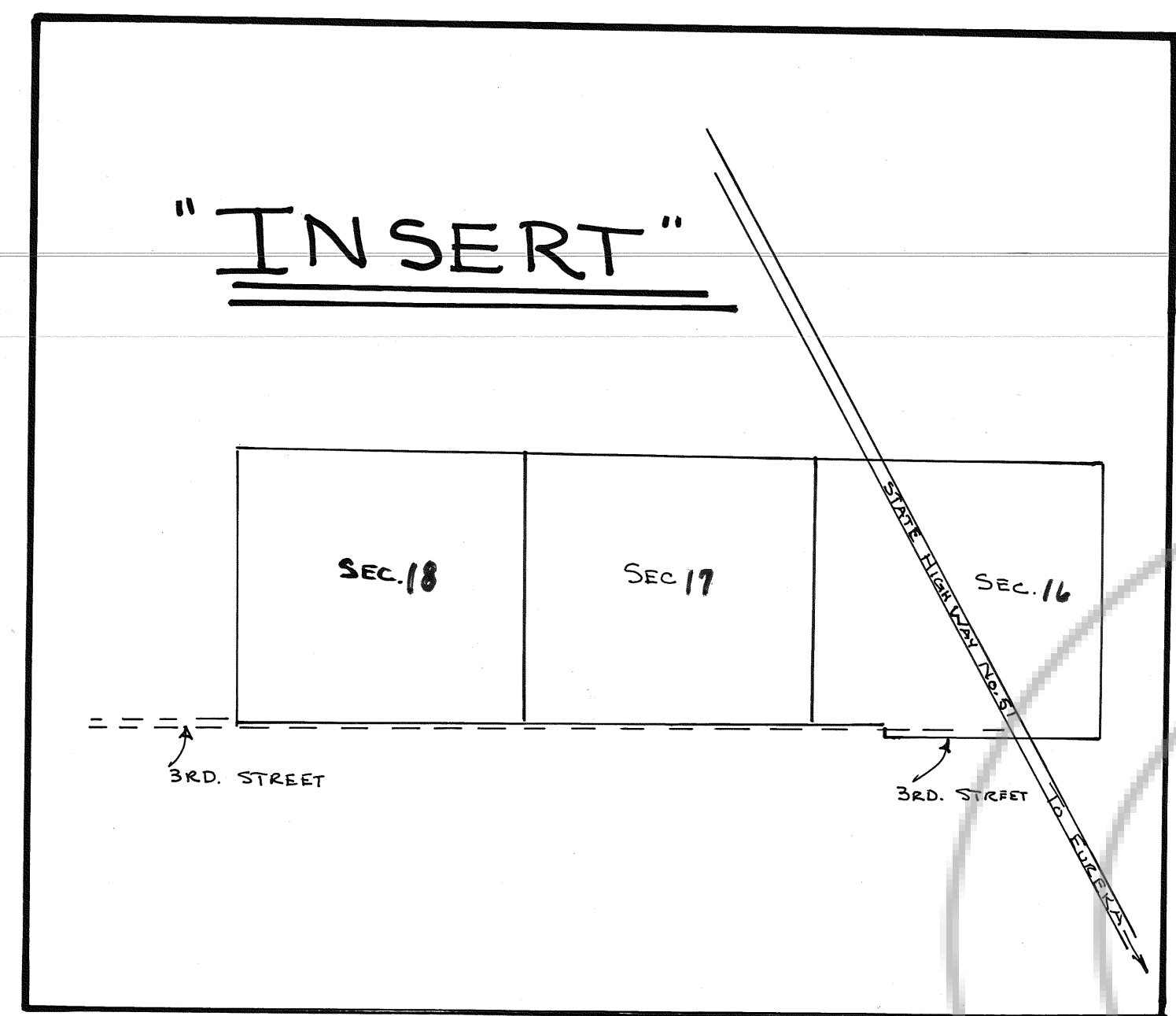
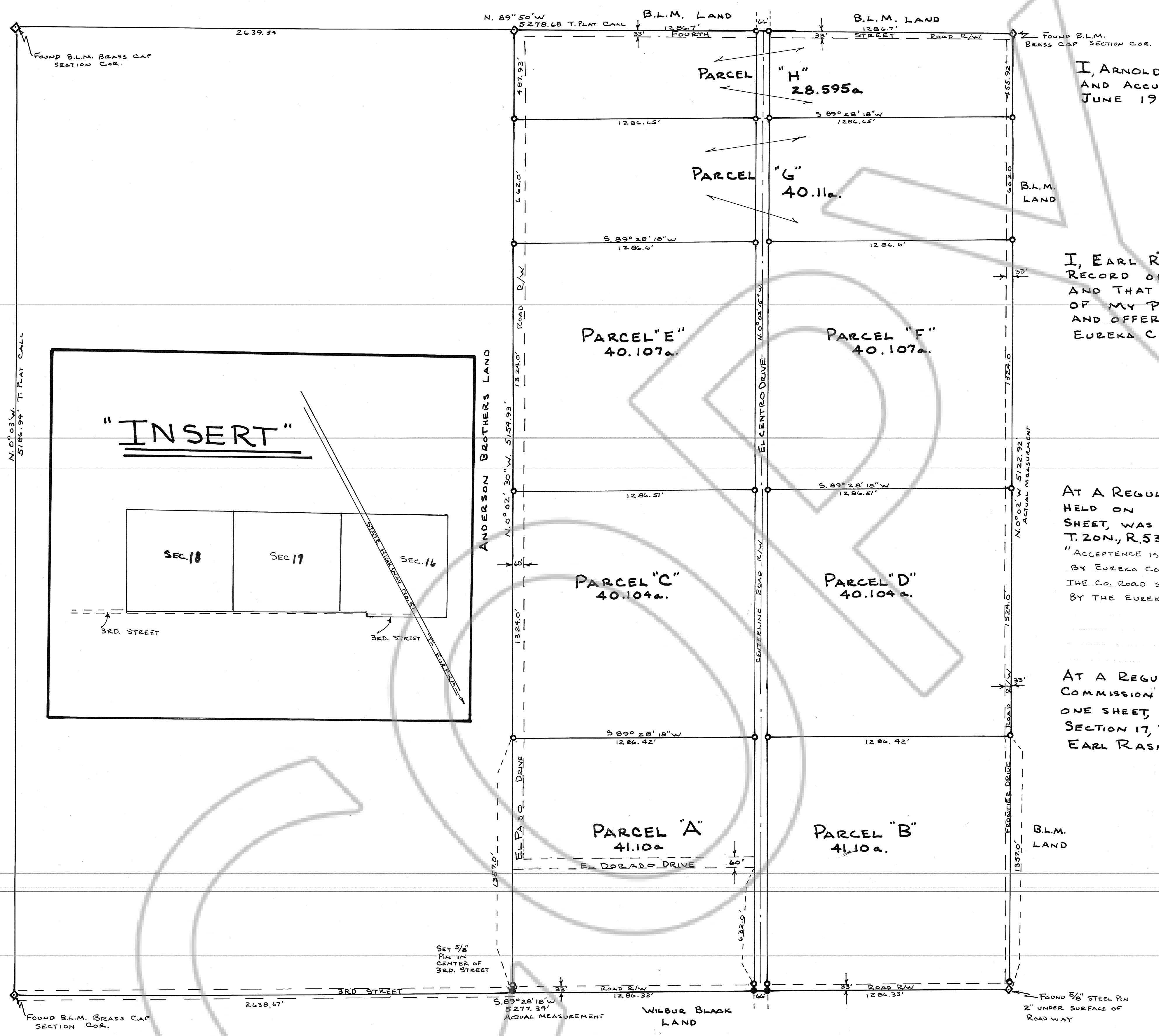
DRAWING NUMBER
81925

DRAWING NUMBER
81925

DRAWING NUMBER
81925

DRAWING NUMBER
81925

TRUE NORTH



NOTE:
ALL PARCEL AREAGES WERE CALCULATED BY INCLUDING THE ROAD RIGHT-OF-WAY TO THE CENTERLINE.

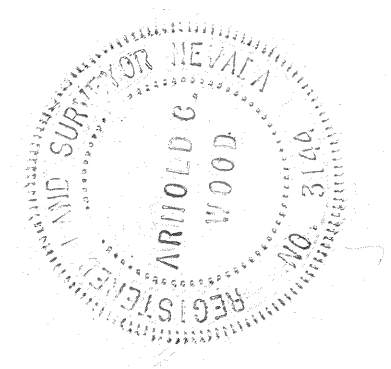
- 3/8" REBAR PIN 18" LONG WITH ALUM. TAG WITH "R.L.S. 3144" WRITTEN ON TAG.
- 5/8" REBAR PIN 18" LONG WITH ALUM. TAG WITH "R.L.S. 3144" WRITTEN ON TAG.
- ◇ SECTION OR 1/4 CORNER

FILED
AT THE REQUEST OF EARL RASMUSSEN
BY SERT. 10, 1981, 15 min. per 2 P.M. to
of OFFICE OF RECORDS, RECORDS OF
EUREKA COUNTY, NEVADA. WILLIS A. D'PAOLI Recorder
No. 81925 Eto 2 10

CERTIFICATION

I, ARNOLD C. WOOD, CERTIFY THAT THIS PLAT IS A TRUE AND ACCURATE MAP OF A SURVEY MADE BY ME DURING JUNE 1981.

Arnold C. Wood
NEV. LIC. LAND SURVEYOR No. 3144



OWNERS CERTIFICATION

I, EARL RASMUSSEN, CERTIFY THAT I AM THE OWNER OF RECORD OF THE E 1/2, SECTION 17, T.20N., R.53E. M.D.MER.; AND THAT THIS PLAT IS AN ACCURATE REPRESENTATION OF MY PROPOSED PARCELLING OF SAID E 1/2 SECTION 17, AND OFFER OF DEDICATION OF STREETS FOR PUBLIC USE OF EUREKA CO.

Earl Rasmussen
OWNER

APPROVALS

AT A REGULAR MEETING OF THE EUREKA CO. COMMISSIONERS HELD ON 1981, THIS MAP, CONSISTING OF ONE SHEET, WAS PRESENTED AS A LARGE DIVISION MAP OF THE E 1/2, SEC. 17, T.20N., R.53E; LOCATED IN EUREKA CO. NEV, BY EARL RASMUSSEN. "ACCEPTANCE IS HEREBY MADE OF THE OFFER OF DEDICATION OF STREETS FOR PUBLIC USE BY EUREKA CO. PROVIDED THAT EUREKA CO. WILL NOT ACCEPT THESE STREETS INTO THE CO. ROAD SYSTEM UNTIL THEY ARE IMPROVED TO THE POINT OF ACCEPTABILITY BY THE EUREKA CO. DEPT. OF PUBLIC WORKS."

Red Daniels
CHAIRMAN EUREKA CO. COMMISSIONERS
Jan Shangle
CLERK, EUREKA COUNTY

AT A REGULAR MEETING OF THE EUREKA CO. PLANNING COMMISSION HELD ON 1981, THIS MAP, CONSISTING OF ONE SHEET, WAS PRESENTED AS A LARGE DIVISION MAP OF THE E 1/2, SECTION 17, T.20N., R.53E; LOCATED IN EUREKA CO., BY EARL RASMUSSEN.

Roberta Daniels
CHAIRMAN EUREKA CO. PLANNING COMMISSION
Jan Shangle
CLERK, EUREKA COUNTY

BASIS FOR BEARINGS: TOWNSHIP PLAT CALL FOR LINE BETWEEN N 1/4 COR. + NE COR. SEC. 17.

LARGE DIVISION MAP
OF: E 1/2, SECTION 17, T.20N., R.53E.
LOCATED IN: EUREKA CO. NEVADA
FOR: EARL RASMUSSEN
SCALE: 1" = 300'

SURVEY + MAP BY: ARNOLD C. WOOD
R.L.S. 3144 JUNE 1981
81925