

SECTION 17, T.20N., R.53E. M.D.MER. NEVADA

Found B.L.M. Brass Cap Section Cor.
 N. 89° 50' 10" W. 52.78' 68" T. PLAT CALL 1286.77'
 2639.34'

Found B.L.M. Brass Cap Section Cor.
 N. 0° 02' 30" W. 51.54' 93" T. PLAT CALL 1286.77'

Found B.L.M. Brass Cap Section Cor.
 N. 0° 02' 30" W. 51.54' 93" T. PLAT CALL 1286.77'

Found B.L.M. Brass Cap Section Cor.
 N. 0° 02' 30" W. 51.54' 93" T. PLAT CALL 1286.77'

Found B.L.M. Brass Cap Section Cor.
 N. 0° 02' 30" W. 51.54' 93" T. PLAT CALL 1286.77'

Found B.L.M. Brass Cap Section Cor.
 N. 0° 02' 30" W. 51.54' 93" T. PLAT CALL 1286.77'

Found B.L.M. Brass Cap Section Cor.
 N. 0° 02' 30" W. 51.54' 93" T. PLAT CALL 1286.77'

Found B.L.M. Brass Cap Section Cor.
 N. 0° 02' 30" W. 51.54' 93" T. PLAT CALL 1286.77'

Found B.L.M. Brass Cap Section Cor.
 N. 0° 02' 30" W. 51.54' 93" T. PLAT CALL 1286.77'

Found B.L.M. Brass Cap Section Cor.
 N. 0° 02' 30" W. 51.54' 93" T. PLAT CALL 1286.77'

Found B.L.M. Brass Cap Section Cor.
 N. 0° 02' 30" W. 51.54' 93" T. PLAT CALL 1286.77'

Found B.L.M. Brass Cap Section Cor.
 N. 0° 02' 30" W. 51.54' 93" T. PLAT CALL 1286.77'

Found B.L.M. Brass Cap Section Cor.
 N. 0° 02' 30" W. 51.54' 93" T. PLAT CALL 1286.77'

Found B.L.M. Brass Cap Section Cor.
 N. 0° 02' 30" W. 51.54' 93" T. PLAT CALL 1286.77'

Found B.L.M. Brass Cap Section Cor.
 N. 0° 02' 30" W. 51.54' 93" T. PLAT CALL 1286.77'

Found B.L.M. Brass Cap Section Cor.
 N. 0° 02' 30" W. 51.54' 93" T. PLAT CALL 1286.77'

Found B.L.M. Brass Cap Section Cor.
 N. 0° 02' 30" W. 51.54' 93" T. PLAT CALL 1286.77'

Found B.L.M. Brass Cap Section Cor.
 N. 0° 02' 30" W. 51.54' 93" T. PLAT CALL 1286.77'

Found B.L.M. Brass Cap Section Cor.
 N. 0° 02' 30" W. 51.54' 93" T. PLAT CALL 1286.77'

Found B.L.M. Brass Cap Section Cor.
 N. 0° 02' 30" W. 51.54' 93" T. PLAT CALL 1286.77'

Found B.L.M. Brass Cap Section Cor.
 N. 0° 02' 30" W. 51.54' 93" T. PLAT CALL 1286.77'

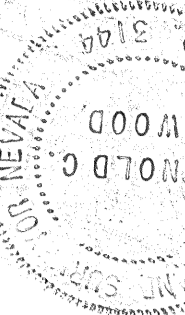
Found B.L.M. Brass Cap Section Cor.
 N. 0° 02' 30" W. 51.54' 93" T. PLAT CALL 1286.77'

Found B.L.M. Brass Cap Section Cor.
 N. 0° 02' 30" W. 51.54' 93" T. PLAT CALL 1286.77'

CERTIFICATION

I, ARNOLD C. WOOD, CERTIFY THAT THIS PLAT IS A TRUE AND ACCURATE MAP OF A SURVEY MADE BY ME DURING JUNE 1981.

Arnold C. Wood
 NEV. LIC. LAND SURVEYOR No. 3144



OWNERS CERTIFICATION

I, B. A. GRASSO, PRESIDENT OF DEVIL'S GATE CORP. CERTIFY THAT DEVIL'S GATE CORPORATION IS THE OWNER OF RECORD OF PARCEL "B" IN THE E 1/2 SEC. 17, T.20N., R.53E. M.D.MER. AND THAT THIS PLAT IS AN ACCURATE REPRESENTATION OF MY PROPOSED PARCELLING OF SAID PARCEL "B".

B.A. Grasso
 PRESIDENT, DEVIL'S GATE CORP.

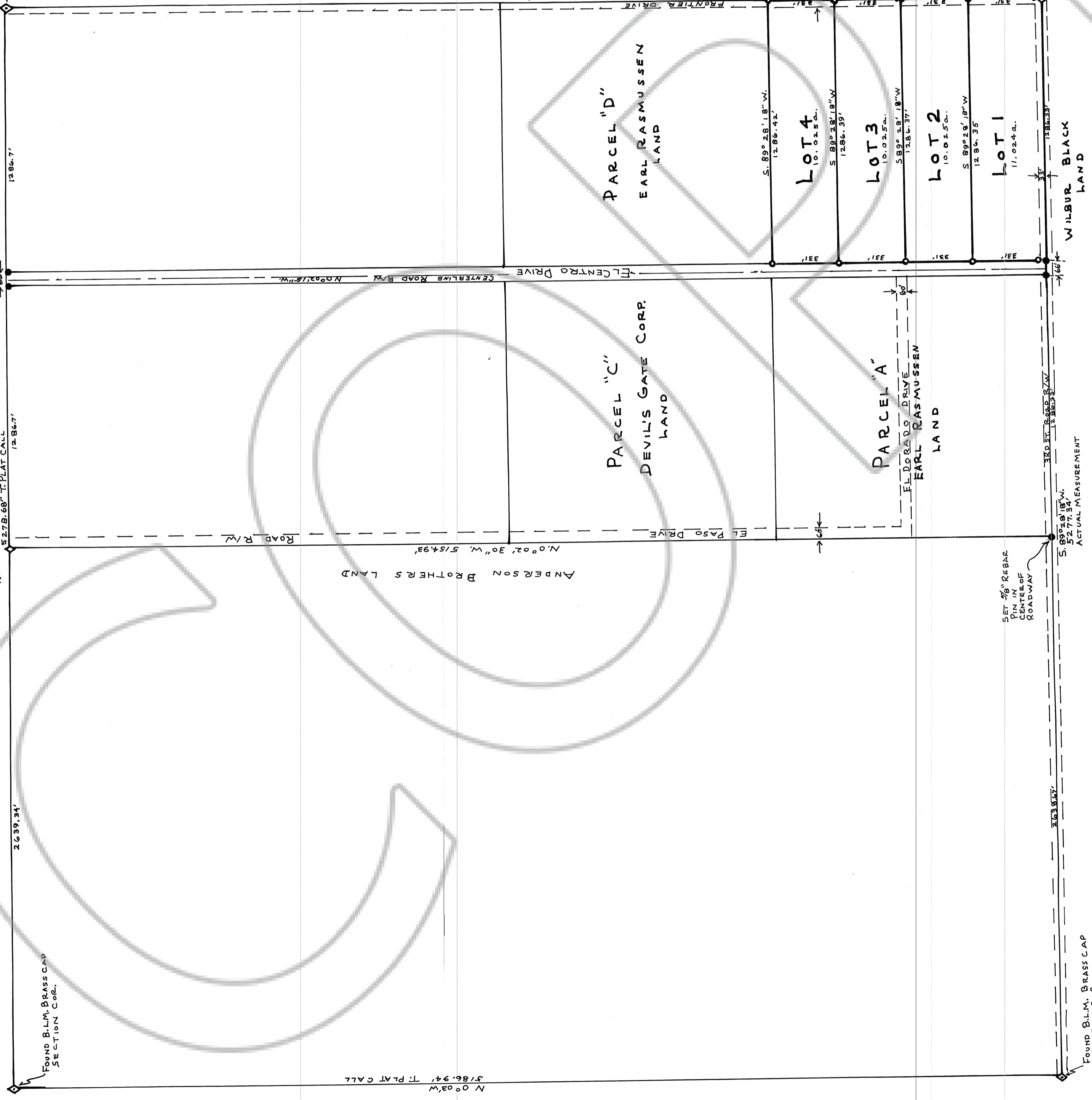
APPROVALS

AT A REGULAR MEETING OF THE EUREKA CO. COMMISSIONERS HELD ON October 6, 1981, THIS MAP, CONSISTING OF ONE SHEET, WAS PRESENTED AS A PARCEL MAP OF PARCEL "B" OF THE LARGE DIVISION MAP OF THE E 1/2, SEC. 17, T.20N., R.53E. M.D.MER. LOCATED IN EUREKA CO., BY B. A. GRASSO, PRES. DEVIL'S GATE CORP.

R.D. Dwyer
 CHAIRMAN, EUREKA CO. COMMISSIONERS
David Shaeffer
 CLERK, EUREKA COUNTY

AT A REGULAR MEETING OF THE EUREKA CO. PLANNING COMMISSION HELD ON September 24, 1981, THIS MAP, CONSISTING OF ONE SHEET, WAS PRESENTED AS A PARCEL MAP OF PARCEL "B" OF THE LARGE DIVISION MAP OF THE E 1/2, SEC. 17, T.20N., R.53E. M.D.MER. LOCATED IN EUREKA CO., BY B. A. GRASSO, PRES. DEVIL'S GATE CORP.

Robert Dwyer
 CHAIRMAN, EUREKA Co. PLANNING COMMISSION
David Shaeffer
 CLERK, EUREKA COUNTY



PARCEL MAP + RECORD OF SURVEY OF: PARCEL "B" OF THE LARGE DIVISION MAP OF E 1/2 SECTION 17, T.20N., R.53E. M.D.MER. LOCATED IN: EUREKA CO. NEVADA FOR: DEVIL'S GATE CORP. SCALE: 1" = 300'
 SURVEY + MAP BY ARNOLD C. WOOD R.L.S. 3144 JUNE - SEPT. 1981

Basis For Bearings: Township Plat Call For Line Between N 1/4 Cor. + NE Cor. Sec. 17.
 Found 3/8" REBAR PIN 18" LONG WITH ALUM. TAG WITH R.L.S. 3144 WRITTEN ON TAG.
 Found 5/8" REBAR PIN 18" LONG WITH ALUM. TAG WITH R.L.S. 3144 WRITTEN ON TAG.
 SECTION OR 1/4 CORNER

NOTE:
 ALL LOT ACRES WERE CALCULATED BY INCLUDING ALL ROAD RIGHT-OF-WAYS WITH THE EXCEPTION OF EL CENTRO DRIVE, WHERE THE LOT ACRES WERE EXTENDED TO THE CENTERLINE ONLY.

Filed at the request of Earl A. Rasmussen
 October 8, 1981, 10:21 a.m. per B. A. Wood
 EUREKA COUNTY, NEVADA
 WILLIS A. DAVOLI, Recorder
 File No. 022255
 Fee \$ 10.00