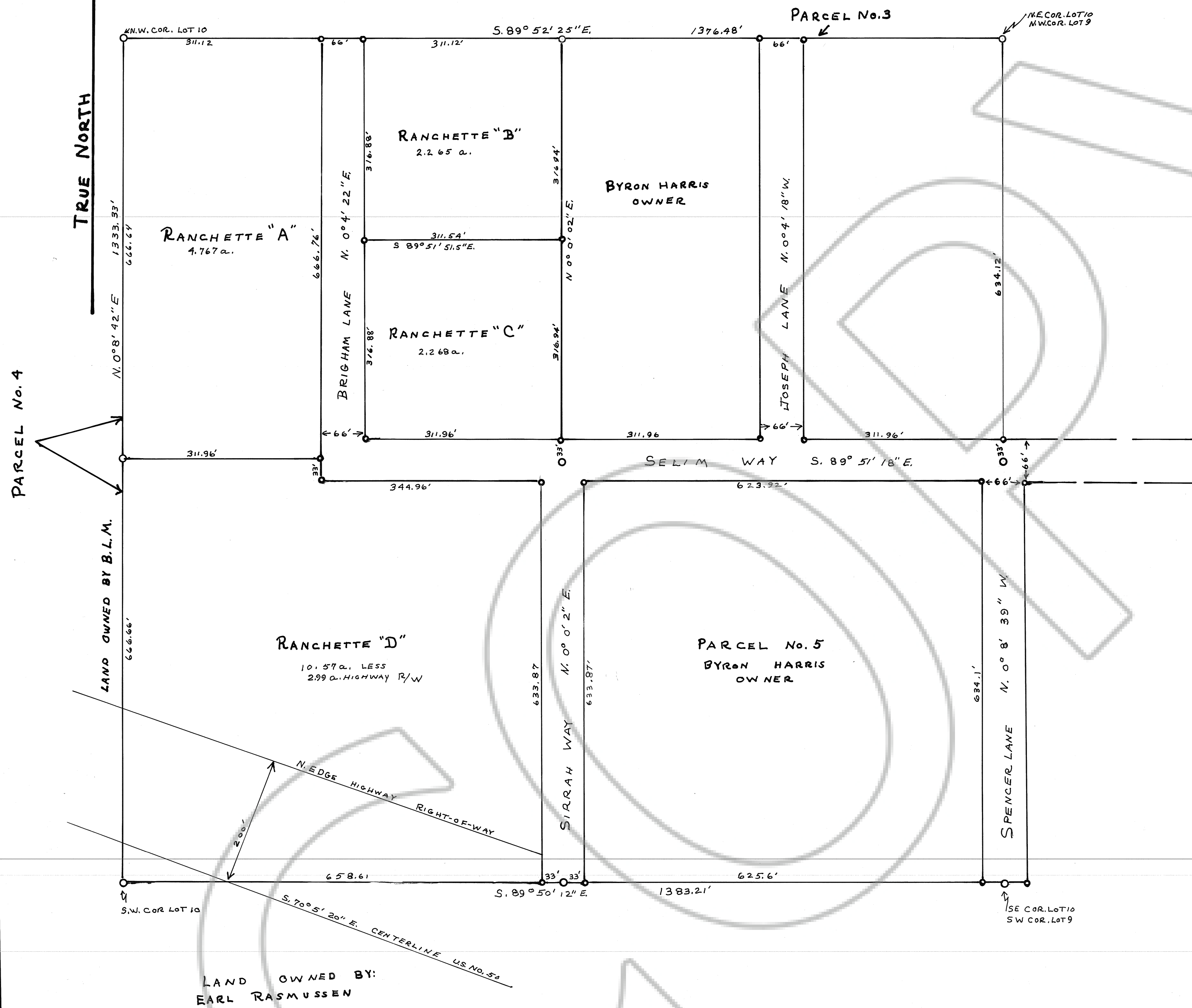


Lot 10, Section 29, T.20N, R.53E., M.D.MER., NEVADA

LAND OWNED BY: ED + JERRY ANDERSON



**CERTIFICATION**

I, ARNOLD C. WOOD, CERTIFY THAT THIS PLAT IS A TRUE AND ACCURATE MAP OF A SURVEY MADE BY ME DURING MAY 1981.

*Arnold C. Wood*  
NEV. LIC. LAND SURVEYOR No. 3144

**OWNERS CERTIFICATION**

I, BYRON HARRIS, CERTIFY THAT I AM THE OWNER OF RECORD OF PARCEL 4, Lot 10, SECTION 29, T.20N, R.53E., M.D.MER., AND THAT THIS PLAT IS AN ACCURATE REPRESENTATION OF MY PROPOSED PARCELLING OF PARCEL 4, Lot 10, SEC. 17, AND OFFER OF DEDICATION OF STREETS FOR PUBLIC USE OF EUREKA CO.

*Byron L. Harris*  
OWNER

**APPROVALS**

AT A REGULAR MEETING OF THE EUREKA CO. COMMISSIONERS HELD ON *October 6,* 1981, THIS MAP, CONSISTING OF ONE SHEET, WAS PRESENTED AS A PROPOSED PARCEL MAP OF PARCEL 4, LOT 10, SEC. 29, T.20N, R.53E.; LOCATED IN EUREKA CO., NEV, BY BYRON HARRIS. "ACCEPTANCE IS HEREBY MADE OF THE OFFER OF DEDICATION OF STREETS FOR PUBLIC USE BY EUREKA CO. PROVIDED THAT EUREKA CO. WILL NOT ACCEPT THESE STREETS INTO THE CO. ROAD SYSTEM UNTIL THEY ARE IMPROVED TO THE POINT OF ACCEPTABILITY BY THE EUREKA CO. DEPT. OF PUBLIC WORKS."

*Ed Daniels*  
CHAIRMAN, EUREKA CO. COMMISSIONERS  
*Paul Shangle*  
CLERK, EUREKA COUNTY

AT A REGULAR MEETING OF THE EUREKA CO. PLANNING COMMISSION HELD ON *August 13,* 1981, THIS MAP, CONSISTING OF ONE SHEET, WAS PRESENTED AS A PARCEL MAP OF PARCEL 4, LOT 10, SECTION 29, T.20N, R.53E.; LOCATED IN EUREKA CO., BY BYRON HARRIS.

*Roberta Daniels*  
CHAIRMAN, EUREKA CO. PLANNING COMMISSION  
*Paul Shangle*  
CLERK, EUREKA COUNTY

Filed  
*Uva Harris*  
*October 13, 1981* at *4:10 PM*  
V.L.S. & E.S.S. Transfer  
82288 Fee \$10.00

BASIS FOR BEARINGS: TOWNSHIP PLAT CALL

**EXPLANATIONS**

- OF 1" STEEL PIN SET FOR PARCEL CORNERS WITH ALUMINUM TAG WIRED TO IT.
- OF 3/8" REBAR PIN SET FOR RANCHETTE CORNERS WITH ALUMINUM TAG WIRED TO IT.

**PARCEL MAP + RECORD OF SURVEY**  
**OF: PARCEL 4, LOT 10, SEC. 29, T.20N, R.53E.**  
**LOCATED IN: EUREKA CO., NEVADA**  
**FOR: BYRON HARRIS**  
**SCALE: 1" = 100'**  
**SURVEY + MAP BY: ARNOLD C. WOOD**  
**R.L.S. 3144 SEPT. 1981**

DRAWING NUMBER  
SAFCO PRODUCTS • NEW HOPE, MINNESOTA  
REORDER BY PART NUMBER 8551

DRAWING NUMBER  
SAFCO PRODUCTS • NEW HOPE, MINNESOTA  
REORDER BY PART NUMBER 8551

DRAWING NUMBER  
*82288*  
SAFCO PRODUCTS • NEW HOPE, MINNESOTA  
REORDER BY PART NUMBER 8551

DRAWING NUMBER  
*Parcel 4*  
*Harris*  
SAFCO PRODUCTS • NEW HOPE, MINNESOTA  
REORDER BY PART NUMBER 8551