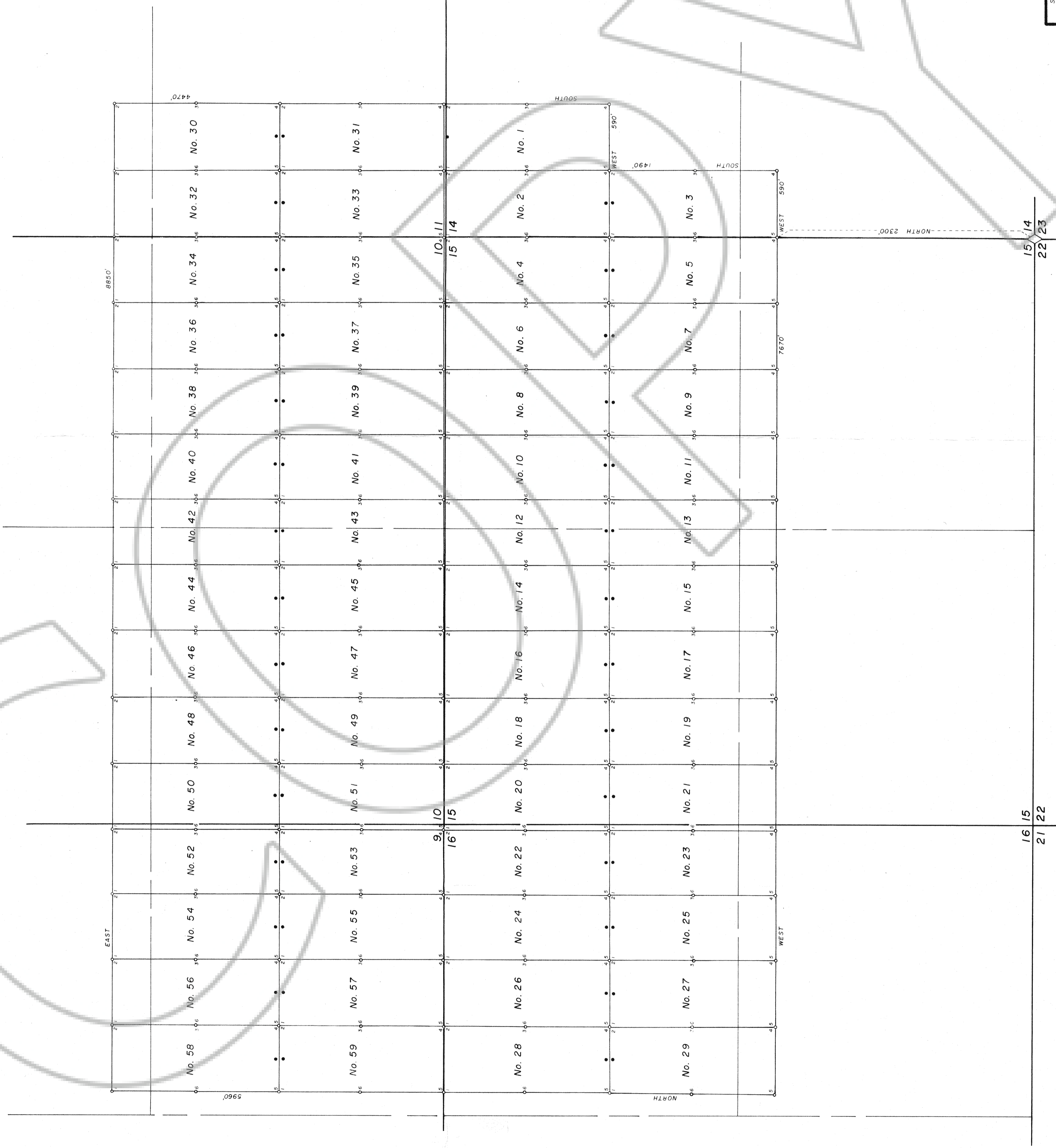


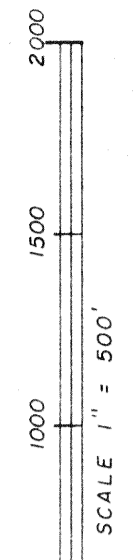
T. 23 N., R. 48 E., M.D.B. & M.



NOTES

1. All Claims are 600' wide and 1500' long with the Discovery Monuments being 10' from the endlines.
2. At all Corners, Side Centers and Discovery Monuments are 4" diameter x 4 1/2" long posts with aluminum tags denoting the appropriate corners.
3. • = Corner and Side Center posts
• = Discovery Monuments
4. SOAR Nos 2-19 located on October 9, 1981
SOAR Nos 1, 20-29 located on October 6, 1981
SOAR Nos 30-45 located on October 6, 1981
SOAR Nos 46-59 located on October 9, 1981
5. These claims are located by: Dresser Industries, Inc.,
Dresser Minerals Division
P.O. Box 1937
Elko, Nevada 89501
6. There are a total of 59 claims.

Filed
AT THE REQUEST OF **BOUNDY & FORMAN**
December 3, 1981, at 4:00 p.m. per 10 P.M. in
RECORDS OF
EUREKA COUNTY, NEVADA
WILLIS A. DEPAOLI, Registrar
File No. **220004**
Fee \$ 285.00



MAP SHOWING
SOAR LODE CLAIMS NOS. 1 - 59
IN
T. 23 N., R. 48 E., M.D.B. & M.
EUREKA COUNTY, NEVADA
FOR
DRESSER INDUSTRIES, INC.

SURVEYED & MAPPED
BY
BOUNDY & FORMAN, INC.
ELY, NEVADA
NOVEMBER, 1981