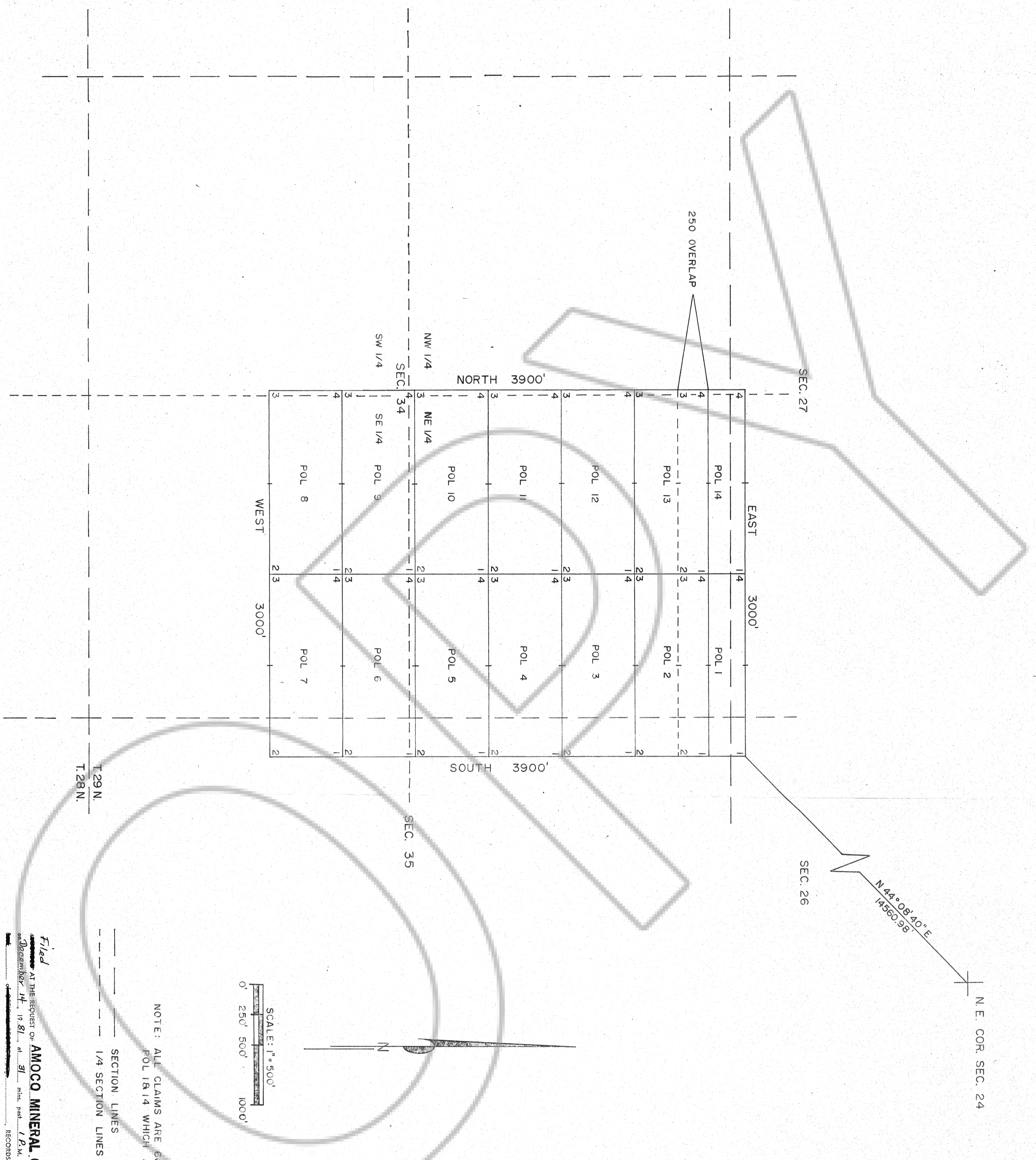


AMOCO MINERALS COMPANY
 THE POL CLAIMS
 EUREKA COUNTY, NEVADA
 T.29N., R.50E. MT. DIABLO PM.



NOTE: ALL CLAIMS ARE 600' X 1500' EXCEPT
 POL 18 1/4 WHICH ARE 550' X 1500'

SECTION LINES
 1/4 SECTION LINES

Filed
 At the request of **AMOCO MINERAL CO**
 December 14, 1981, at 81 _____
 EUREKA COUNTY, NEVADA
 WITNESSES
 S26335
 S26335
 S26335

S26335