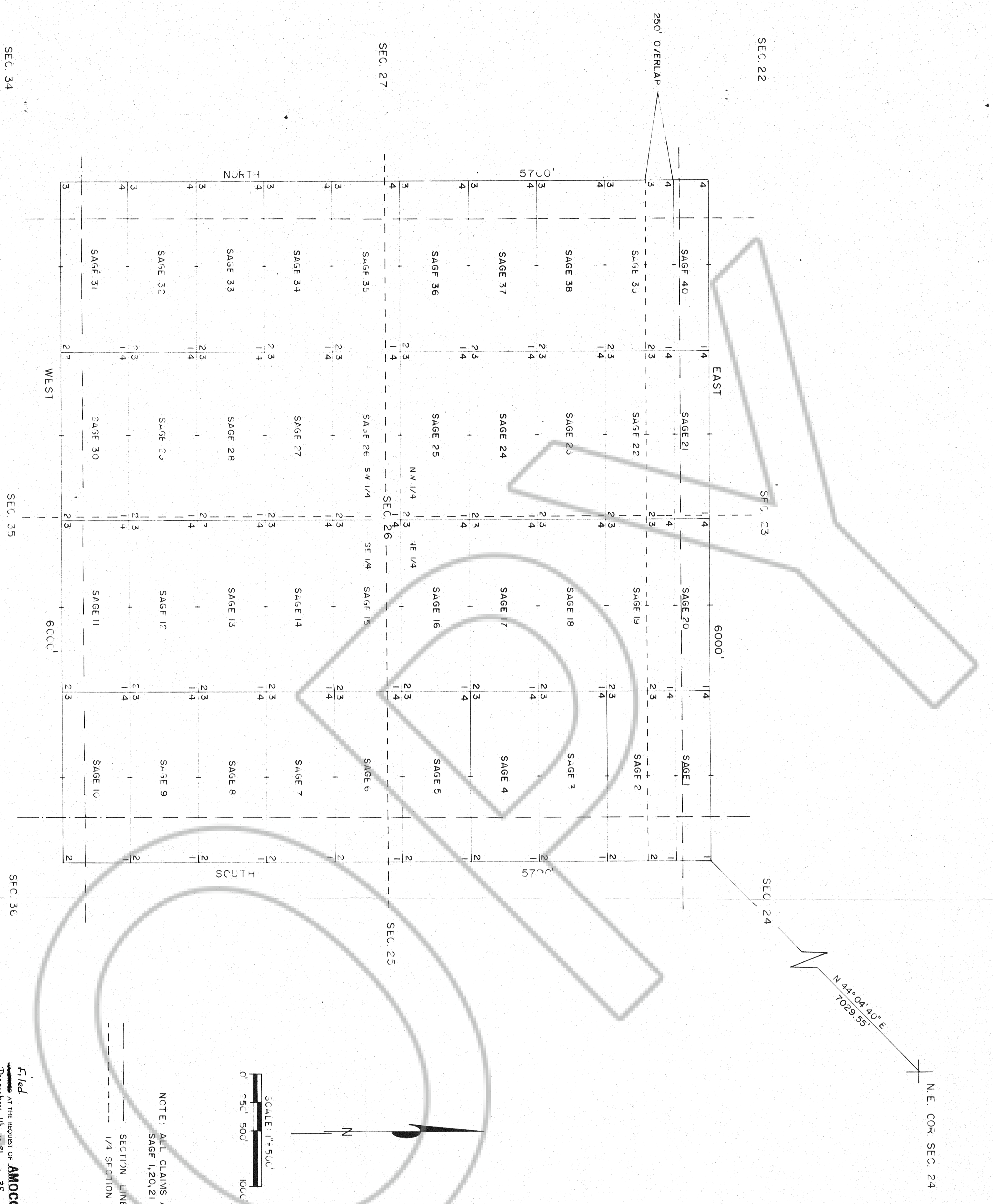
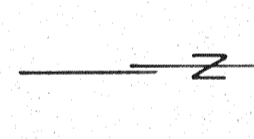
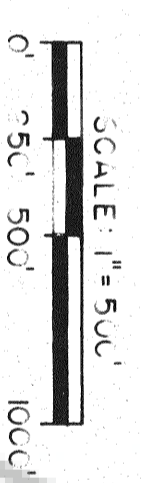


AMOCO MINERALS COMPANY
THE SAGE CLAIMS
EUREKA COUNTY, NEVADA
 T29N., R50E. MT. DIABLO PM.



NOTE: ALL CLAIMS ARE 600' X 1500' EXCEPT
 SAGE 1, 20, 21 & 40 WHICH ARE 550' X 1500'

— SECTION LINES
 - - - 1/4 SECTION LINES



Filed
 AT THE REQUEST OF **AMOCO MINERAL CO**
 on December 14, 1981 at 3:57 p.m. in
 EUREKA COUNTY, NEVADA
 WILLIS A. DIBOUX, Recorder
 Fee \$ 6.00

82676