

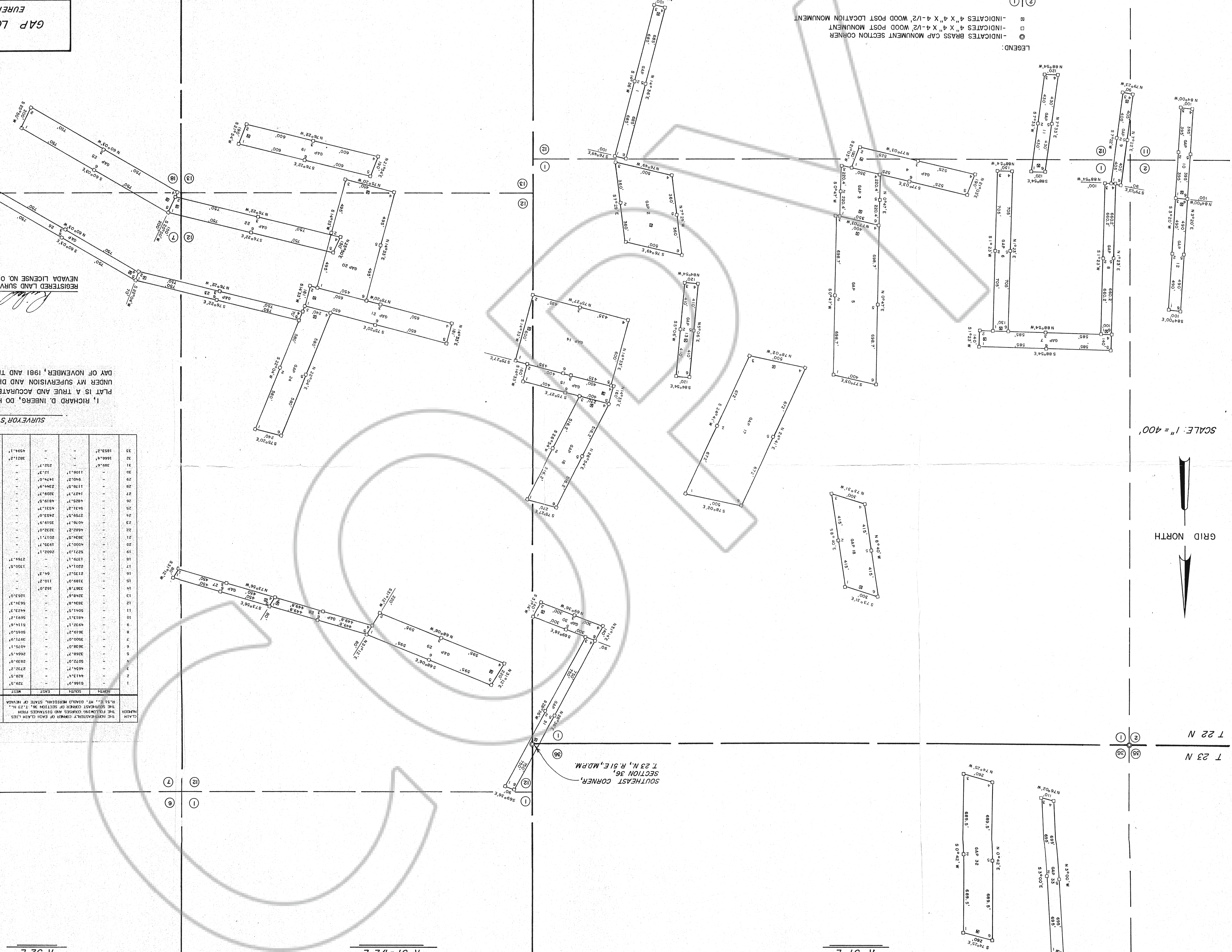
**MAP OF THE
GAP LODE MINING CLAIMS**
LOCATED BY RICHARD D. INBERG
AGENT FOR EXXON CORPORATION
EXXON MINERALS COMPANY
P.O. BOX 120
DENVER, COLORADO 80201
JOB NO. 1845-B1
83036
DATE: 1/5/82

EXXON MINERALS CO
19 22
M. M.
3
M. DIST. EAST
WILL M. DRAHOL
OF EUREKA COUNTY, NEVADA
FILE NO. 83036 FOR S 495

REGISTERED LAND SURVEYOR
NEVADA LICENSE NO. 05950
RICHARD D. INBERG
PLAT IS A TRUE AND ACCURATE MAP OF THE SURVEY MADE
UNDER MY SUPERVISION AND DIRECTION BETWEEN THE 4TH
DAY OF NOVEMBER, 1981 AND THE 18TH DAY OF JANUARY, 1982.

SURVEYOR'S CERTIFICATION

CLAIM NUMBER	SECTION	LENGTH	WIDTH	AREA	DATE OF CLAIM
1	50' FROM THE SOUTHERLY END	5166.3'	729.5'	3768.2'	NOVEMBER 9, 1981
2	100' FROM THE NORTHERLY END	4621.7'	828.5'	3823.8'	NOVEMBER 9, 1981
3	20' FROM THE NORTHERLY END	4621.7'	828.5'	3823.8'	NOVEMBER 9, 1981
4	40' FROM THE NORTHERLY END	4621.7'	828.5'	3823.8'	NOVEMBER 9, 1981
5	20' FROM THE SOUTHERLY END	3266.7'	828.5'	2706.8'	NOVEMBER 9, 1981
6	30' FROM THE NORTHERLY END	3628.0'	828.5'	3003.8'	NOVEMBER 9, 1981
7	100' FROM THE NORTHERLY END	3989.3'	828.5'	3300.8'	NOVEMBER 9, 1981
8	20' FROM THE NORTHERLY END	3989.3'	828.5'	3300.8'	NOVEMBER 9, 1981
9	30' FROM THE NORTHERLY END	3989.3'	828.5'	3300.8'	NOVEMBER 9, 1981
10	40' FROM THE NORTHERLY END	3989.3'	828.5'	3300.8'	NOVEMBER 9, 1981
11	50' FROM THE NORTHERLY END	3989.3'	828.5'	3300.8'	NOVEMBER 9, 1981
12	60' FROM THE NORTHERLY END	3989.3'	828.5'	3300.8'	NOVEMBER 9, 1981
13	70' FROM THE NORTHERLY END	3989.3'	828.5'	3300.8'	NOVEMBER 9, 1981
14	80' FROM THE NORTHERLY END	3989.3'	828.5'	3300.8'	NOVEMBER 9, 1981
15	90' FROM THE NORTHERLY END	3989.3'	828.5'	3300.8'	NOVEMBER 9, 1981
16	100' FROM THE NORTHERLY END	3989.3'	828.5'	3300.8'	NOVEMBER 9, 1981
17	120' FROM THE NORTHERLY END	3989.3'	828.5'	3300.8'	NOVEMBER 9, 1981
18	140' FROM THE NORTHERLY END	3989.3'	828.5'	3300.8'	NOVEMBER 9, 1981
19	160' FROM THE NORTHERLY END	3989.3'	828.5'	3300.8'	NOVEMBER 9, 1981
20	180' FROM THE NORTHERLY END	3989.3'	828.5'	3300.8'	NOVEMBER 9, 1981
21	200' FROM THE NORTHERLY END	3989.3'	828.5'	3300.8'	NOVEMBER 9, 1981
22	40' FROM THE EASTERN END	4621.7'	828.5'	3823.8'	NOVEMBER 12, 1981
23	50' FROM THE EASTERN END	4621.7'	828.5'	3823.8'	NOVEMBER 12, 1981
24	60' FROM THE EASTERN END	4621.7'	828.5'	3823.8'	NOVEMBER 12, 1981
25	70' FROM THE EASTERN END	4621.7'	828.5'	3823.8'	NOVEMBER 12, 1981
26	80' FROM THE EASTERN END	4621.7'	828.5'	3823.8'	NOVEMBER 12, 1981
27	90' FROM THE EASTERN END	4621.7'	828.5'	3823.8'	NOVEMBER 12, 1981
28	10' FROM THE EASTERN END	2244.7'	1176.3'	2641.7'	NOVEMBER 11, 1981
29	40' FROM THE WESTERN END	1176.3'	2244.7'	2641.7'	NOVEMBER 11, 1981
30	60' FROM THE WESTERN END	1176.3'	2244.7'	2641.7'	NOVEMBER 11, 1981
31	80' FROM THE WESTERN END	1176.3'	2244.7'	2641.7'	NOVEMBER 11, 1981
32	100' FROM THE WESTERN END	1176.3'	2244.7'	2641.7'	NOVEMBER 9, 1981
33	20' FROM THE SOUTHERLY END	2759.5'	2452.0'	6775.8'	NOVEMBER 9, 1981
34	30' FROM THE SOUTHERLY END	2759.5'	2452.0'	6775.8'	NOVEMBER 9, 1981
35	40' FROM THE SOUTHERLY END	2759.5'	2452.0'	6775.8'	NOVEMBER 9, 1981
36	50' FROM THE SOUTHERLY END	2759.5'	2452.0'	6775.8'	NOVEMBER 9, 1981
37	60' FROM THE SOUTHERLY END	2759.5'	2452.0'	6775.8'	NOVEMBER 9, 1981
38	70' FROM THE SOUTHERLY END	2759.5'	2452.0'	6775.8'	NOVEMBER 9, 1981
39	80' FROM THE SOUTHERLY END	2759.5'	2452.0'	6775.8'	NOVEMBER 9, 1981
40	90' FROM THE SOUTHERLY END	2759.5'	2452.0'	6775.8'	NOVEMBER 9, 1981
41	100' FROM THE SOUTHERLY END	2759.5'	2452.0'	6775.8'	NOVEMBER 9, 1981
42	120' FROM THE SOUTHERLY END	2759.5'	2452.0'	6775.8'	NOVEMBER 9, 1981
43	140' FROM THE SOUTHERLY END	2759.5'	2452.0'	6775.8'	NOVEMBER 9, 1981
44	160' FROM THE SOUTHERLY END	2759.5'	2452.0'	6775.8'	NOVEMBER 9, 1981
45	180' FROM THE SOUTHERLY END	2759.5'	2452.0'	6775.8'	NOVEMBER 9, 1981
46	200' FROM THE SOUTHERLY END	2759.5'	2452.0'	6775.8'	NOVEMBER 9, 1981



R 51 E R 51 E R 51 E R 52 E R 52 E R 52 E

T 23 N T 22 N

SCALE: 1" = 400'

GRID NORTH

LEGEND:
 (1) INDICATES BRASS CAP MONUMENT SECTION CORNER
 (2) INDICATES 4" X 4" X 1/2" WOOD POST MONUMENT
 (3) INDICATES SECTION CORNER BY PROTRACTION DIAGRAM
 NOTE: BEARINGS ARE GRID BEARINGS BASED ON THE NEVADA STATE COORDINATE SYSTEM - EAST ZONE.