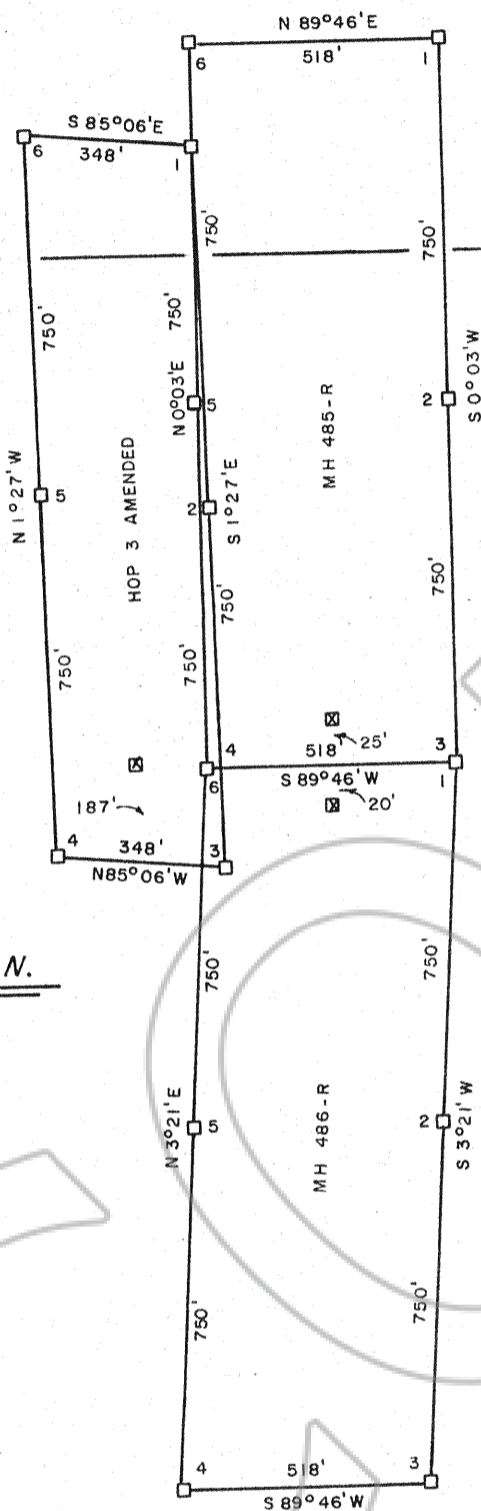
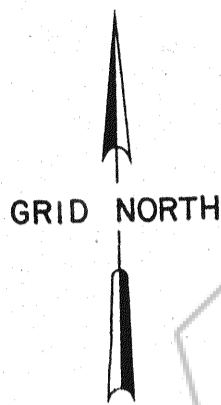


R. 52 E.

SECTION 7  
SECTION 18



T. 22 N.



SCALE: 1" = 400'

LEGEND:

- - INDICATES 4"X4"X4-1/2' WOOD POST MONUMENT
- ⊠ - INDICATES 4"X4"X4-1/2' WOOD POST LOCATION MONUMENT

NOTE:

- 1) BEARINGS ARE GRID BEARINGS BASED ON THE NEVADA STATE COORDINATE SYSTEM, EAST ZONE.
- 2) TIES FROM THE SOUTHEAST CORNER OF SECTION 36, T. 23 N., R. 51 E., M.D.P.M., TO THE NORTHEAST CORNER OF:
 

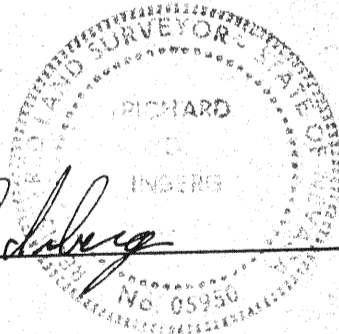
|               |                 |
|---------------|-----------------|
| HOP 3 AMENDED | - SOUTH 4673.3' |
|               | EAST 5447.2'    |
| MH 485 - R    | - SOUTH 4454.9' |
|               | EAST 5965.4'    |
| MH 486 - R    | - SOUTH 5954.9' |
|               | EAST 5964.0'    |
- 3) LOCATION DATES:
 

|               |                   |
|---------------|-------------------|
| HOP 3 AMENDED | NOVEMBER 21, 1981 |
| MH 485 - R    | NOVEMBER 21, 1981 |
| MH 486 - R    | NOVEMBER 21, 1981 |

SURVEYOR'S CERTIFICATION

I, RICHARD D. INBERG, DO HEREBY CERTIFY THAT THIS PLAT IS A TRUE AND ACCURATE MAP OF THE SURVEY MADE UNDER MY SUPERVISION AND DIRECTION BETWEEN THE 4TH DAY OF NOVEMBER, 1981 AND THE 18TH DAY OF JANUARY, 1982.

*Richard D. Inberg*  
 REGISTERED LAND SURVEYOR  
 NEVADA LICENSE NO. 05950



*Filed* AT THE REQUEST OF  
**EXXON MINERALS CO**

on *January 26*, 19*82*  
 at *33* mins. past *3* P. M.

RECORDS  
 OF EUREKA COUNTY, NEVADA  
 WILL A. DePAOLI  
 Recorder

File No. **83040** Fee \$ *45.00*

MAP OF THE  
 MH 485-R, MH 486-R, &  
 HOP 3 AMENDED  
 LODGE MINING CLAIMS  
 EUREKA COUNTY, NEVADA

LOCATED BY RICHARD D. INBERG  
 AGENT FOR EXXON CORPORATION  
 EXXON MINERALS COMPANY  
 P. O. BOX 120

DENVER, COLORADO 80201

JOB NO. 1845-81

DATE: 1/7/82

83040