

SOUTHEAST CORNER,
SECTION 36,
T. 23 N., R. 51 E., M.D.P.M.

R. 51-1/2 E.

R. 51 E.

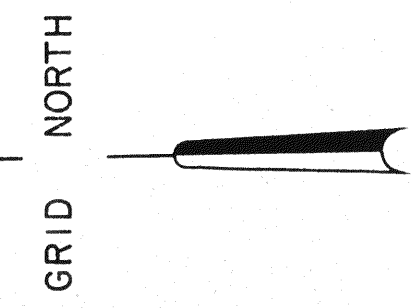
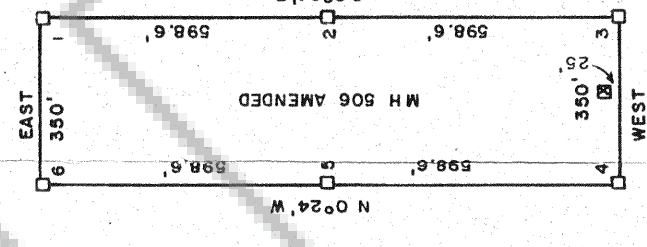
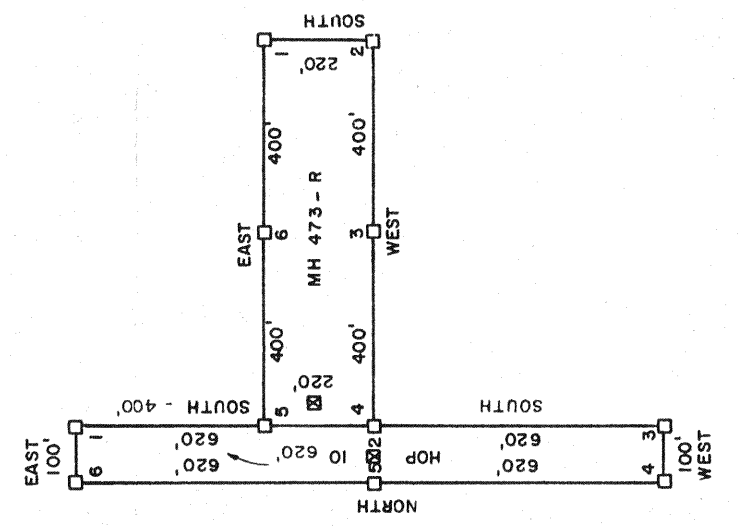
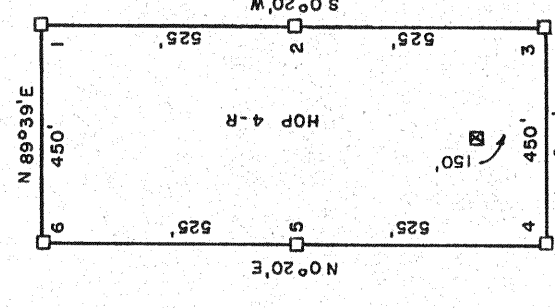
R. 52 E.

NOTE:
1) TIES FROM THE SOUTHEAST CORNER OF SECTION 36, T. 23 N., R. 51 E., M.D.P.M., EUREKA COUNTY, NEVADA, TO THE NORTHEAST CORNER OF:
HOP 4-R - SOUTH 8233.3' - EAST 4376.6'
HOP 9 - SOUTH 14,048.6' - EAST 5691.3'
HOP 10 - SOUTH 10,882.1' - WEST 4831.3'
HOP 11 - SOUTH 6627.6' - WEST 6087.1'
MH 473-R - SOUTH 11,282.1' - WEST 4031.3'
MH 506 AMENDED - SOUTH 12,267.2' - WEST 126.9'

2) LOCATION DATES:
HOP 4-R - NOVEMBER 21, 1981
HOP 9 - NOVEMBER 22, 1981
HOP 10 - NOVEMBER 17, 1981
HOP 11 - NOVEMBER 17, 1981
MH 473-R - NOVEMBER 17, 1981
MH 506 AMENDED - NOVEMBER 21, 1981

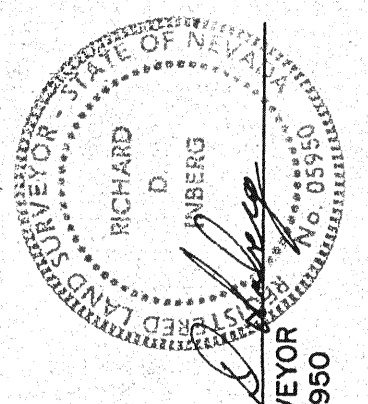
3) BEARINGS ARE GRID BEARINGS BASED ON THE NEVADA STATE COORDINATE SYSTEM, EAST ZONE.

T. 22 N.



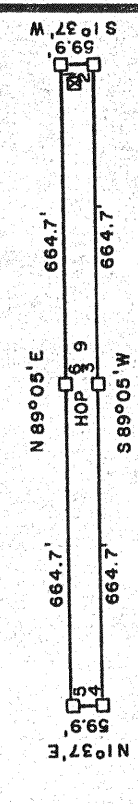
SCALE: 1" = 400'

SURVEYOR'S CERTIFICATION
I, RICHARD D. INBERG, DO HEREBY CERTIFY THAT THIS PLAT IS A TRUE AND ACCURATE MAP OF THE SURVEY MADE UNDER MY SUPERVISION AND DIRECTION BETWEEN THE 4TH DAY OF NOVEMBER, 1981 AND THE 18TH DAY OF JANUARY, 1982.



REGISTERED LAND SURVEYOR
NEVADA LICENSE NO. 09950

EXXON MINERALS CO
ON BEHALF OF THE REQUESTOR
on January 26, 1982
at 34 min past 3 P.M.
RECORDS
OF EUREKA COUNTY, NEVADA
WILL A. DRPAOLI
Recorder
File No. 83047



LEGEND:
● - INDICATES BRASS CAP MONUMENT SECTION CORNER
□ - INDICATES 4" X 4" X 4-1/2" WOOD POST MONUMENT
■ - INDICATES 4" X 4" X 4-1/2" WOOD POST LOCATION MONUMENT LOCATED 20' FROM END LINE UNLESS NOTED
① ② - INDICATES SECTION CORNER BY PROTRACTION DIAGRAM
③ ④

MAP OF THE
MH 473-R, MH 506 AMENDED, HOP 4-R,
HOP 9, HOP 10 AND HOP 11
LODE MINING CLAIMS
EUREKA COUNTY, NEVADA
LOCATED BY RICHARD D. INBERG, AGENT FOR EXXON CORPORATION
EXXON MINERALS COMPANY
DENVER, COLORADO 80201
JOB NO. 8842-81 DATE: 1/7/82