

MATCH SHEET 3

MATCH SHEET 1

LEGEND:

- - INDICATES BRASS CAP MONUMENT SECTION CORNER
- ⊙ - INDICATES 4" X 4" X 4-1/2" WOOD POST MONUMENT
- ⊙ - INDICATES 4" X 4" X 4-1/2" WOOD POST LOCATION LOCATED 25' FROM END LINE UNLESS NOTED
- ⊙ - INDICATES SECTION CORNER BY PROTRACTOR

DIAGRAM
 Filed at the office of EXXON MINERAL SYCO
 WILLIAM A. DAVOU, Nevada
 REGISTERED LAND SURVEYOR
 No. 81,745
 Includes all 4 sheets
 SHEET 2 OF 4 SHEETS

SURVEYOR'S CERTIFICATION
 I, RICHARD D. INSEB, DO HEREBY CERTIFY THAT THIS
 PLAT IS A TRUE AND ACCURATE MAP OF THE SURVEY MADE
 UNDER MY SUPERVISION AND DIRECTION BETWEEN THE 4TH
 DAY OF NOVEMBER, 1981 AND THE 18TH DAY OF JANUARY, 1982.

NOTE:

- 1) BEARINGS ARE GRID BEARINGS BASED ON THE NEVADA STATE COORDINATE SYSTEM, EAST ZONE.
- 2) TIES FROM THE SOUTHWEST CORNER OF SECTION 36, T. 23 N., R. 51 E., M.D.P.M., EUREKA COUNTY, NEVADA, TO THE NORTHEAST CORNER OF:
 HOPE # 79 SOUTH 3661.1' - EAST 4109.6'
 BOWSER NO 30 SOUTH 735.7' - EAST 6200.0'
 BOWSER NO 32 NORTH 229.0' - EAST 6031.3'
 BOWSER # 43 NORTH 938.3' - EAST 3738.5'
 BOWSER NO. 44 SOUTH 350.0' - EAST 3095.3'
 BOWSER NO 51 NORTH 1647.5' - EAST 1445.7'
 BOWSER NO 52 NORTH 340.8' - EAST 1192.3'
 BOWSER NO 57 NORTH 2314.9' - WEST 270.2'
 BOWSER NO 69 SOUTH 1449.0' - EAST 2512.8'
- 3) AMENDED LOCATION DATES:
 DECEMBER 30, 1981 - HOPE # 75, # 77, # 79
 JANUARY 4, 1982 - HOPE # 81, # 83, # 85, # 87,
 BOWSER NO. 71, NO. 73, NO. 75
 JANUARY 5, 1982 - BOWSER NO. 27, 27-A, NO. 29, 29-A, NO. 30
 JANUARY 8, 1982 - WEST INCLINE NO. 1
 JANUARY 9, 1982 - WEST INCLINE NO. 2, NO. 3
 JANUARY 14, 1982 - BOWSER 31-A, 33-A
 JANUARY 15, 1982 - BOWSER 35-A, 37-A, NO. 61 THROUGH NO. 70
 JANUARY 16, 1982 - # 43, NO. 47 THROUGH NO. 60
 JANUARY 17, 1982 - BOWSER NO. 31 THROUGH 38, NO. 44, NO. 45, NO. 46

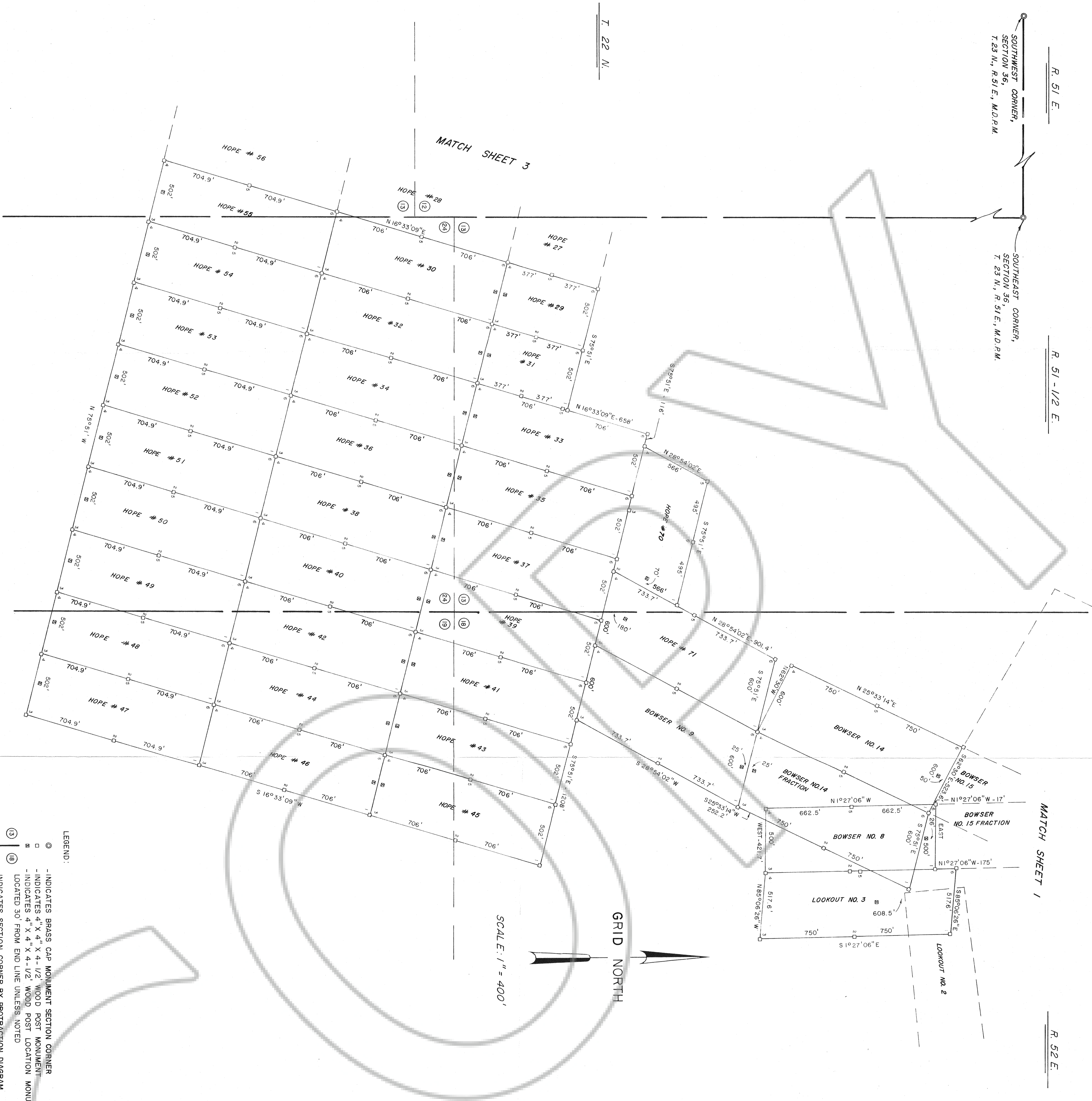
MAP OF THE AMENDED
 HOPE, BOWSER, WEST INCLINE & LOOKOUT
 LODE MINING CLAIMS
 MOUNT HOPE MINES, INC., OWNER
 EUREKA COUNTY, NEVADA
 AMENDED BY LEON L. SCIBA
 EXXON CORPORATION, OPTIONEES AND LESSEES
 C/O EXXON MINERALS COMPANY
 P.O. BOX 150, DENVER, COLORADO 80201

SOUTHWEST CORNER,
SECTION 36,
T. 23 N., R. 51 E., M.D.P.M.

SOUTHEAST CORNER,
SECTION 36,
T. 23 N., R. 51 E., M.D.P.M.

MATCH SHEET 1

MATCH SHEET 3



T. 22 N.

- LEGEND:
- ⊙ - INDICATES BRASS CAP MONUMENT SECTION CORNER
 - ⊠ - INDICATES 4" X 4" X 4-1/2" WOOD POST MONUMENT
 - ⊡ - INDICATES 4" X 4" X 4-1/2" WOOD POST LOCATION MONUMENT LOCATED 30' FROM END LINE UNLESS NOTED
 - ⊕ - INDICATES SECTION CORNER BY PROTRACTION DIAGRAM

GRID NORTH

SCALE: 1" = 400'

NOTE:

- 1) BEARINGS ARE GRID BEARINGS BASED ON THE NEVADA STATE COORDINATE SYSTEM, EAST ZONE.
- 2) TIES FROM THE SOUTHWEST CORNER OF SECTION 36, T. 23 N., R. 51 E., M.D.P.M., EUREKA COUNTY, NEVADA, TO THE NORTHEAST CORNER OF:

HOPE # 45	SOUTH	9472.8'	EAST	10399.2'
HOPE # 70	SOUTH	8388.6'	EAST	8337.8'
BOWSER NO 14 FRACTION	SOUTH	6539.6'	EAST	10584.1'
LOOKOUT NO 3	SOUTH	6209.9'	EAST	10945.3'

3) AMENDED LOCATION DATES:

DECEMBER 31, 1981: HOPE #31 THROUGH HOPE #46
 JANUARY 1, 1982: HOPE #47 THROUGH HOPE #55
 JANUARY 2, 1982: HOPE #29, HOPE #30
 JANUARY 18, 1982: HOPE #70, HOPE #71, BOWSER NO. 9, NO.14, NO.14 FRACTION
 JANUARY 19, 1982: BOWSER NO. 8, LOOKOUT NO. 3

1. RICHARD D. INBERG, DO HEREBY CERTIFY THAT THIS PLAT IS A TRUE AND ACCURATE MAP OF THE SURVEY MADE UNDER MY SUPERVISION AND DIRECTION, BETWEEN THE 4TH DAY OF NOVEMBER, 1981 AND THE 18TH DAY OF JANUARY, 1982.

SURVEYOR'S CERTIFICATION

RICHARD D. INBERG
 REGISTERED LAND SURVEYOR
 NEVADA LICENSE NO. 05950

Filed at the request of **EXXON MINERAL SICO**
 on January 27, 1982, at 10:30 a.m. per S.D.M. by
 SUREKA COUNTY, NEVADA
 WILLIS A. DEPAOLI, Recorder
 Fee \$ 2,715.00
 Includes Plat & Slides

SHEET 4 OF 4 SHEETS

MAP OF THE AMENDED
 HOPE, BOWSER, WEST INCLINE & LOOKOUT
 LOBE MINING CLAIMS
 MOUNT HOPE MINES, INC., OWNER
 EUREKA COUNTY, NEVADA

AMENDMENT BY LEON L. SCIBA
 EXXON CORPORATION, OPTIONEE AND LESSEE
 c/o EXXON MINERALS COMPANY
 P.O. BOX 120, DENVER, COLORADO 80201
 JOB NO. 1893-81 DATE: 1/22/82