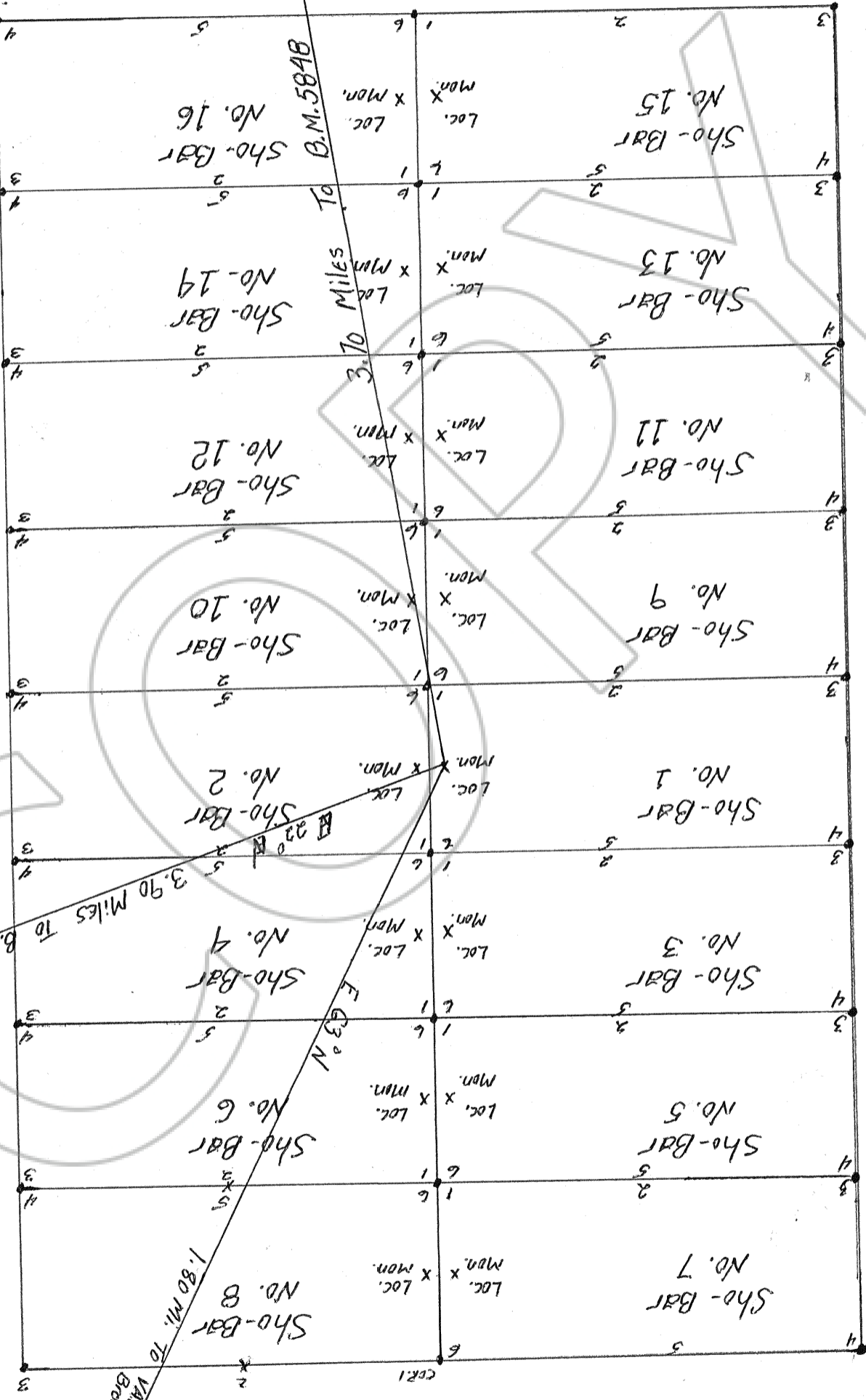


MAP OF SHOBAR LODE CLAIM GROUP

Filed AT THE REQUEST OF Arlene Danels
 on February 1, 1982 at 11 mins. part 8 A.M. hr
 OFFICE RECORDS OF
 EUREKA COUNTY, NEVADA
 WILLIS A. DePAOLI Recorder
 No. No. 83272 Fee \$ 240.00

Located Dec. 1981 by: Stephen D. Danels
Sheep Cr Ranch
Carlin Nev. 89822
 Unknown Mining District
 Eureka Co. Nevada
 Unsurveyed.
 SECS. 13, 14, 23, 24 T. 27N R. 99E
 Horse Cr Valley, Nev. QV81



Scale 1" = 500'

Mag. North