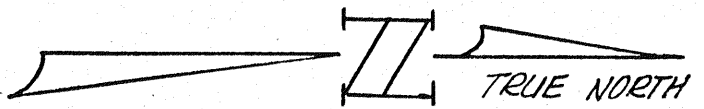
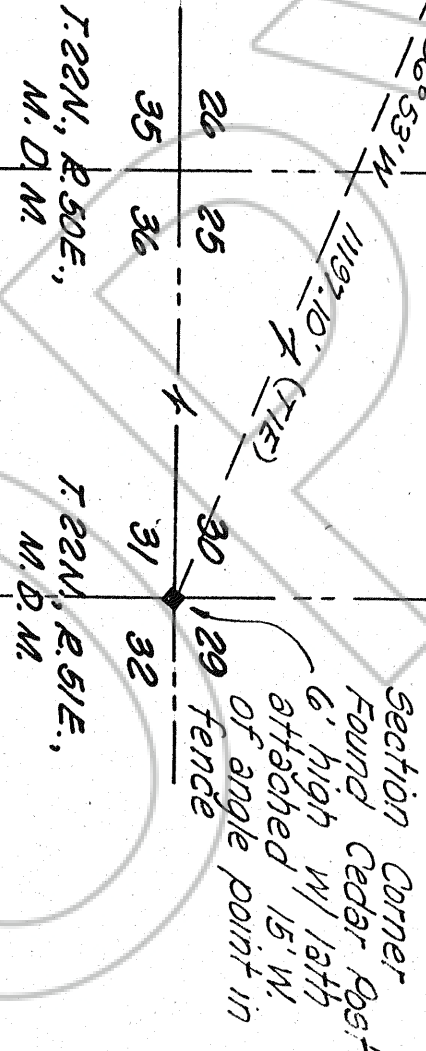
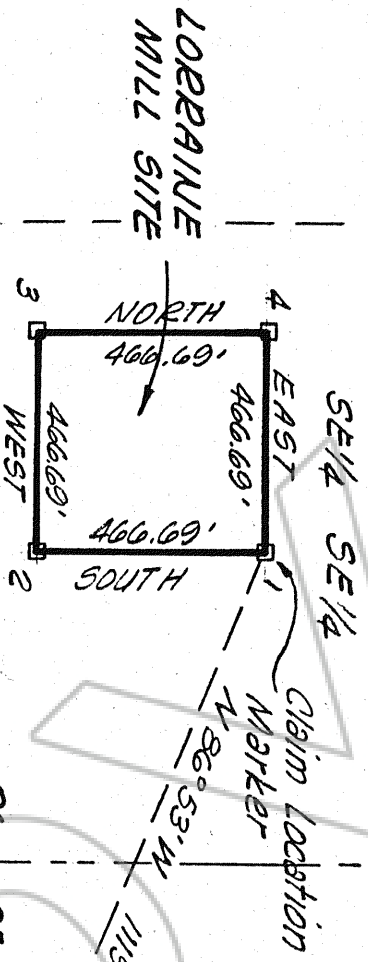


84208



SCALE: 1" = 400'

Note: All corners are 4" x 4" Cedar posts

MAP OF LORRAINE MILL SITE  
 SITUATE IN SE 1/4 SECTION 26, T. 22N., R. 50E., M. D. M.  
 EUREKA COUNTY, NEVADA

LOCATOR - EXXON CORPORATION  
 P.O. BOX 4508, HOUSTON  
 TEXAS 77210

LOCATED - APRIL 14, 1982

Filed for record at the request  
 of Exxon Corporation on this 5<sup>th</sup> day  
 of May, 1982 at 08 minutes  
 past 8 o'clock, P.M., records of Eureka  
 County, Nevada's

Fee \$ 15.00

Wm. D. DeBolt  
 County Recorder

File No. 84208