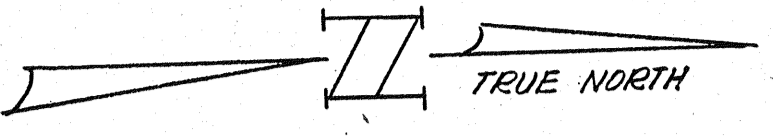


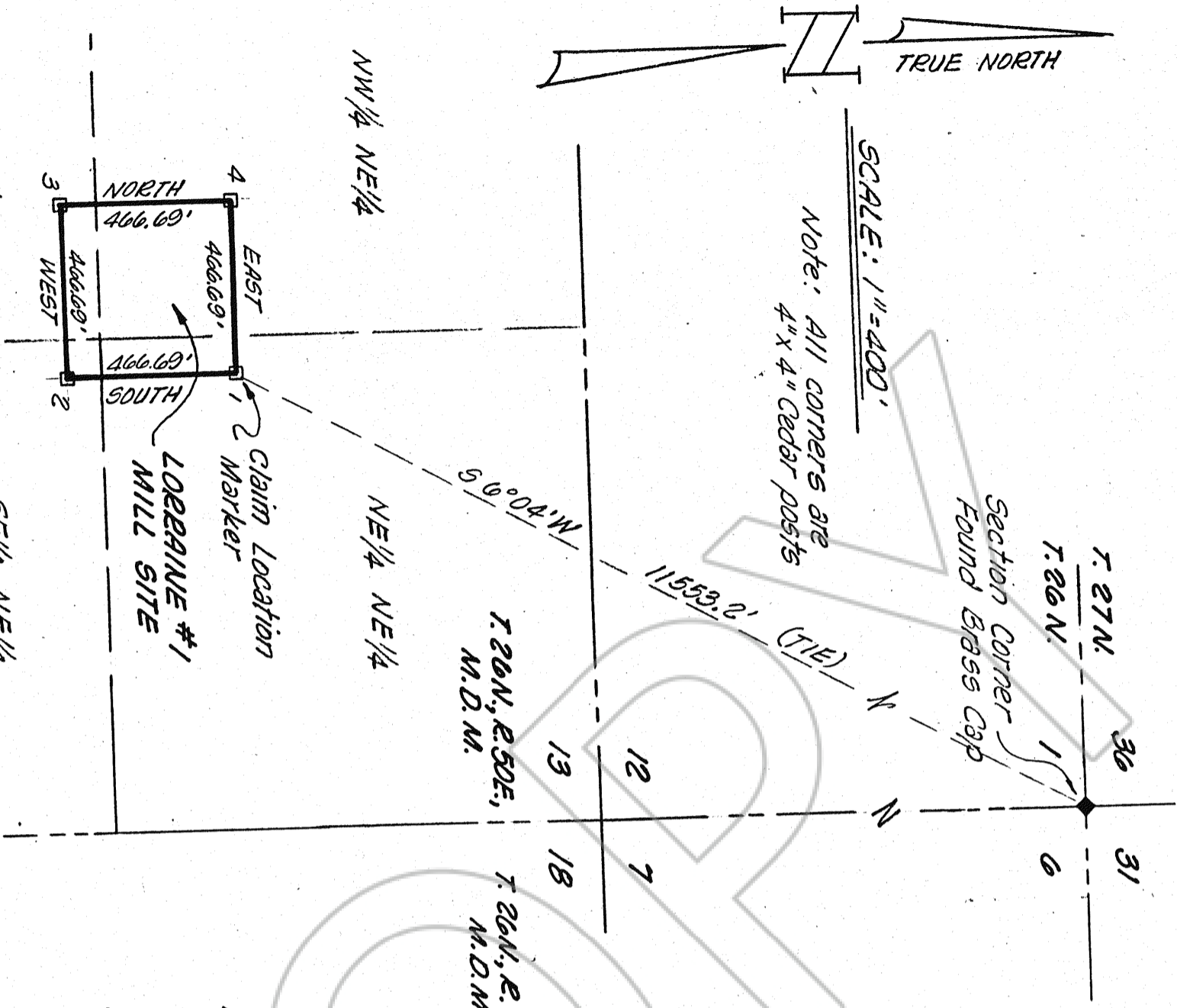
84210

MAP OF LORRAINE #1 MILL SITE  
SITUATE IN NE 1/4 SECTION 13, T. 26N., R. 50E., M.D.M.  
EUREKA COUNTY, NEVADA



SCALE: 1" = 400'

Note: All corners are  
4" x 4" Cedar posts



Filed for record at the request  
of Exxon Corporation on this 5<sup>th</sup> day  
of May, 1982 at 08 minutes  
past 8 o'clock, A.M., records of Eureka  
County, Nevada.

Fee \$ 15<sup>00</sup>

Willa G. McFarland  
County Recorder

File No. 84210

LOCATOR - EXXON CORPORATION  
P.O. BOX 4508, HOUSTON  
TEXAS 77210  
LOCATED - APRIL 13, 1982