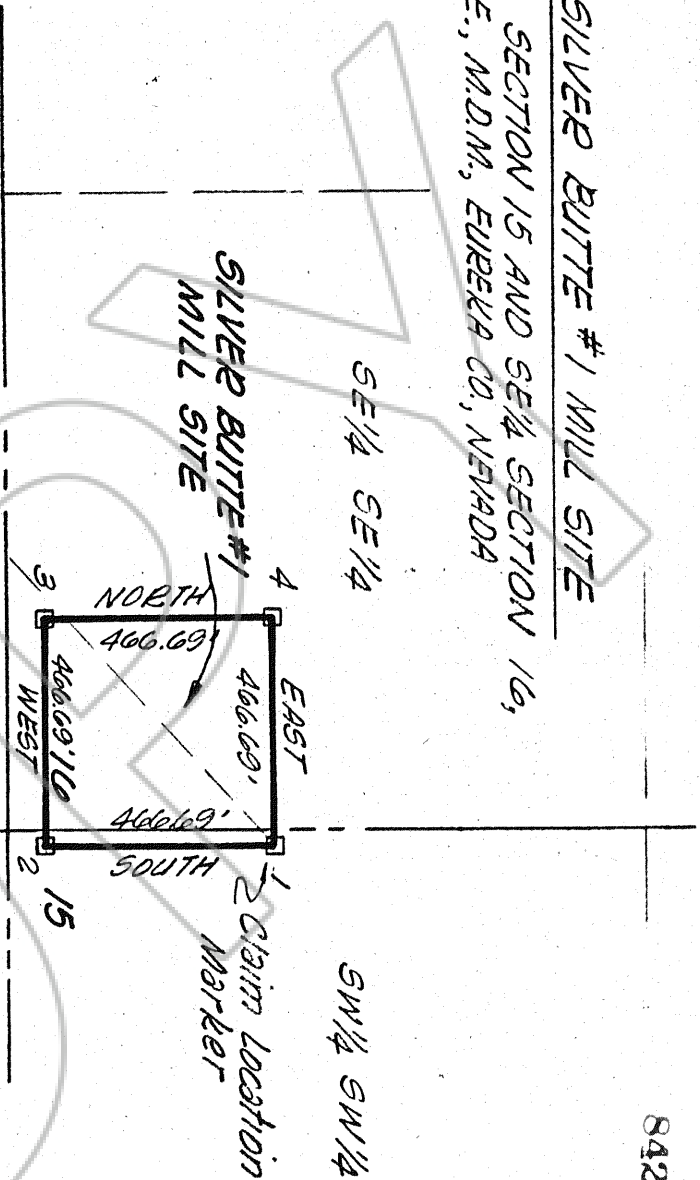
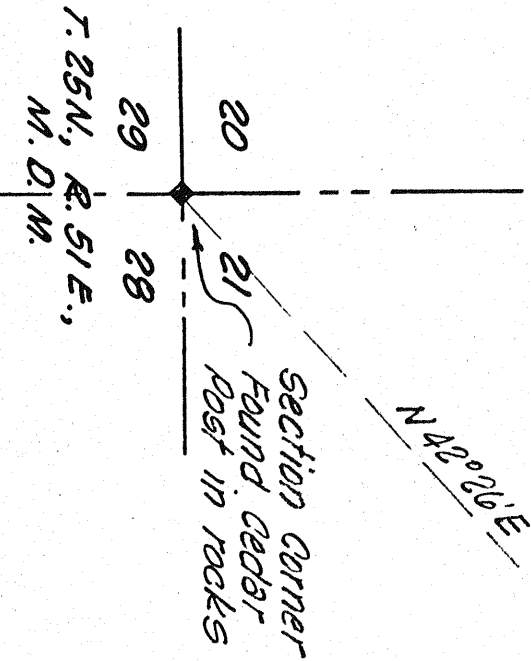


MAP OF SILVER BUTTE #1 MILL SITE
SITUATE IN SW 1/4 SECTION 15 AND SE 1/4 SECTION 16,
T. 25N., R. 51E., M.D.M., EUREKA CO., NEVADA



SCALE: 1" = 400'

Note: All corners are 4" x 4" Cedar posts



T. 25N., R. 51E.,
M. D. M.

LOCATOR - EXXON CORPORATION
P.O. BOX 4508 HOUSTON
TEXAS 77210

LOCATED - APRIL 12, 1982

Filed for record at the request of
Exxon Corporation on this 5th day
of May, 1982 at 08 minutes
past 8 o'clock, ^{P.M.} records of Eureka
County, Nevada.

Fee \$ 15.00

Wm. A. McCall
County Recorder

File No. 84214