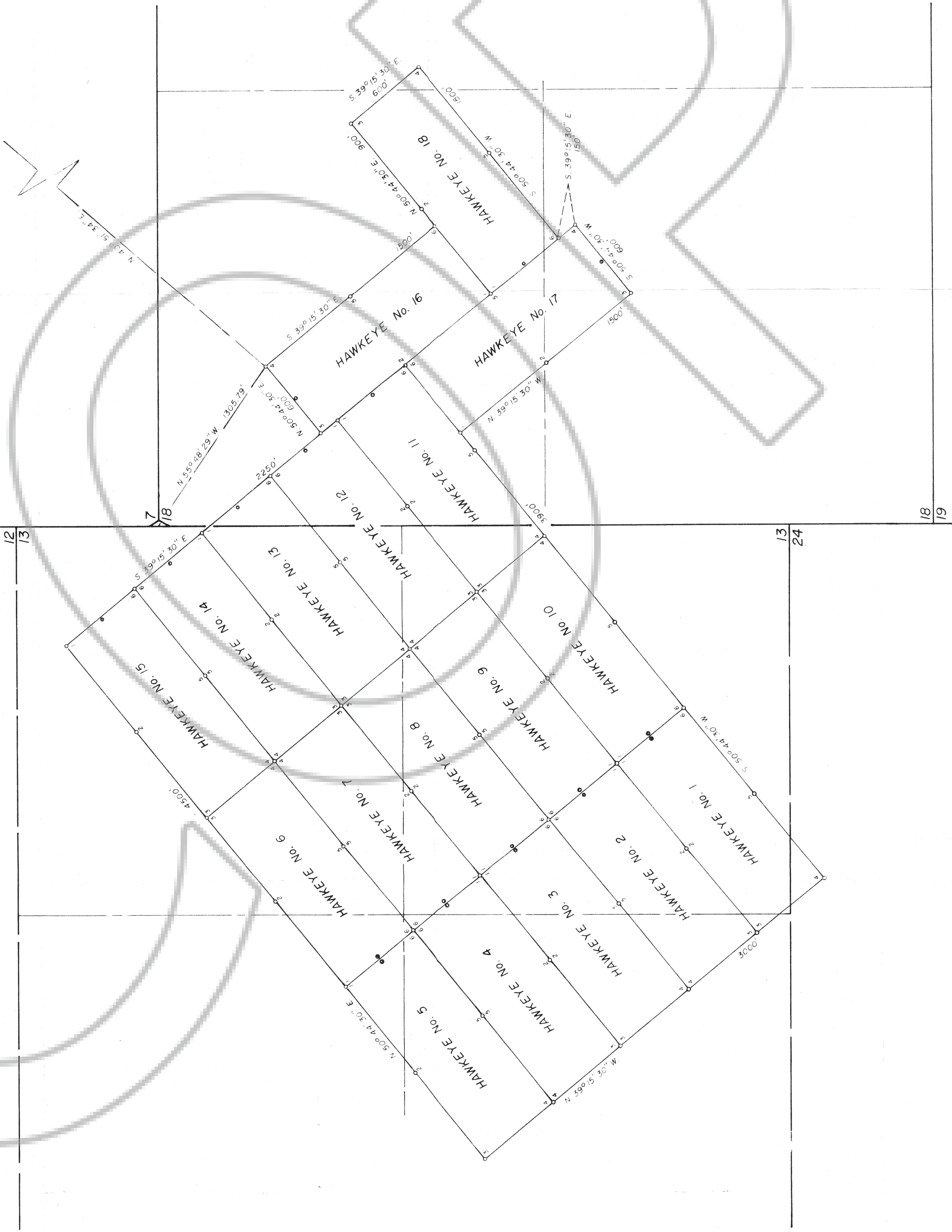


T. 19 N., R. 52 & 53 E., M.D.B. & M.

T. 20 N.
T. 19 N.
N 1/4 Cor. SECTION 5

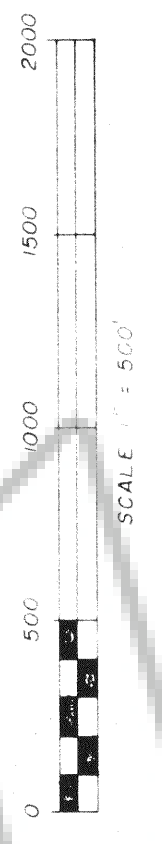
R. 53 E.
R. 52 E. UNSURVEYED



NOTES:

- 1 All Claims are 600' wide and 1500' long.
- 2 At all Corners, Side Centers and Discovery Monuments are 4" x 4" x 4 1/2" long posts with aluminum tags denoting the appropriate corners
- 3 All Discovery Monuments are 20' in from the end lines.
- 4 ○ = Corners and Side Centers
● = Discovery Monuments
- 5 HAWKEYE Nos. 1 through 8 and 16 located on November 3, 1978.
HAWKEYE Nos. 9 through 15 located on November 1, 1978.
HAWKEYE Nos. 17 and 18 located on November 15, 1978.
- 6 HAWKEYE Nos. 11 through 16 amended May 3, 1982.
HAWKEYE Nos. 1 through 10, 17 and 18 amended May 4, 1982.
- 7 These Claims are located by: Herbert R. Hawkins
756 River St.
Elko, Nevada 89601
Earl J. Allred
317 Main
Carlin, Nevada 89822
- 8 There are a total of 18 Claims.

Filed AT THE REQUEST OF AMERICAN SELCO INC
 on May 26, 1982, at 4:47 min. p.m. 10:45 a.m.
 EUREKA COUNTY, NEVADA
 WILLIS A. DEPAOLI Recorder
 File No. 84304



MAP SHOWING
HAWKEYE LODGE CLAIMS
 IN
 T. 19 N., R. 52 & 53 E., M.D.B. & M.
 EUREKA COUNTY, NEVADA
 FOR
HERBERT R. HAWKINS & EARL J. ALLRED

SURVEYED & MAPPED
 BY
 BOUNDY & FORMAN, INC.
 ELI, NEVADA
 MAY, 1982