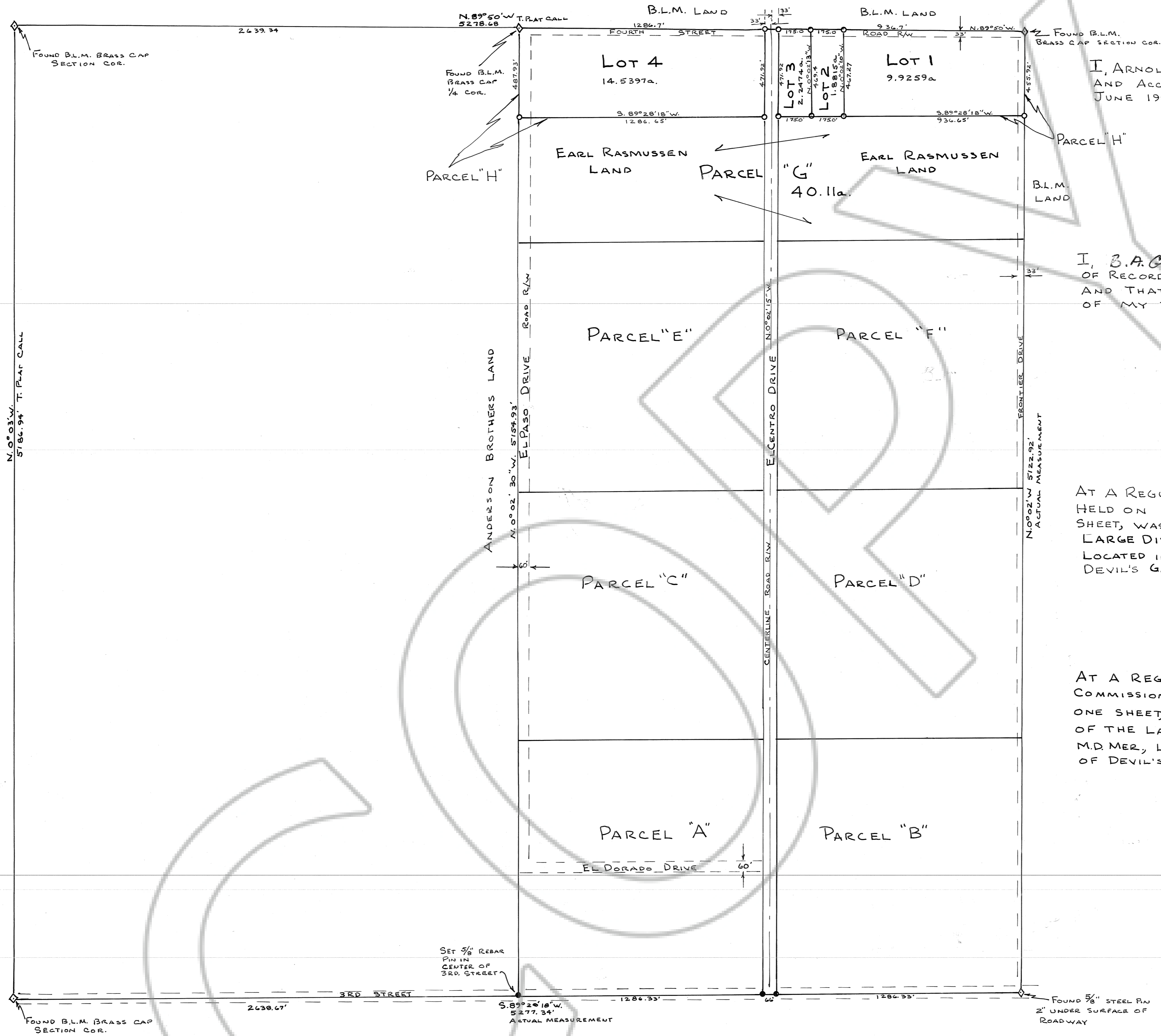


SECTION 17, T.20N, R.53E. M.D.MER. NEVADA

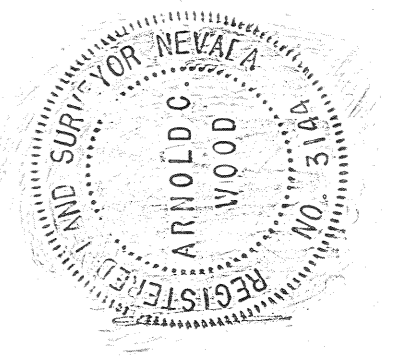
TRUE NORTH



**CERTIFICATION**

I, ARNOLD C. WOOD, CERTIFY THAT THIS PLAT IS A TRUE AND ACCURATE MAP OF A SURVEY MADE BY ME FROM JUNE 1981 TO MARCH 1982.

Arnold C. Wood  
NEV. LIC. LAND SURVEYOR No. 3144



**OWNERS CERTIFICATION**

I, B.A. GRASSO, CERTIFY THAT DEVIL'S GATE CORP. IS THE OWNER OF RECORD OF PARCEL "H" IN THE E 1/2 SECTION 17, T.20N, R.53E. M.D. MER., AND THAT THIS PLAT IS AN ACCURATE REPRESENTATION OF MY PROPOSED PARCELLING OF SAID PARCEL "H".

DEVIL'S GATE CORP.  
B.A. Grasso  
BY B. A. GRASSO, PRESIDENT

**APPROVALS**

AT A REGULAR MEETING OF THE EUREKA CO. COMMISSIONERS HELD ON 1982, THIS MAP, CONSISTING OF ONE SHEET, WAS PRESENTED AS A PARCEL MAP OF PARCEL "H" OF THE LARGE DIVISION MAP OF THE E 1/2, SECTION 17, T.20N, R.53E. M.D. MER., LOCATED IN EUREKA CO., BY B.A. GRASSO, PRESIDENT OF DEVIL'S GATE CORP.

Rob Darnell  
CHAIRMAN, EUREKA CO. COMMISSIONERS  
Paul Shangle  
CLERK, EUREKA COUNTY

AT A REGULAR MEETING OF THE EUREKA CO. PLANNING COMMISSION HELD ON 1982, THIS MAP, CONSISTING OF ONE SHEET, WAS PRESENTED AS A PARCEL MAP OF PARCEL "H" OF THE LARGE DIVISION MAP OF THE E 1/2, SECTION 17, T.20N, R.53E. M.D. MER., LOCATED IN EUREKA CO., BY B.A. GRASSO, PRESIDENT OF DEVIL'S GATE CORP.

Roberta M. Darnell  
CHAIRMAN EUREKA CO. PLANNING COMM.  
Paul Shangle  
CLERK, EUREKA COUNTY

Filed AT THE REQUEST OF E.A. Rasmussen  
Time 16, 1982, at 53 mins. part 8 A.M.  
EUREKA COUNTY, NEVADA. WILLIS A. DePAOLI, Recorder  
File No. 84388 Page 8 of 8

BASIS FOR BEARINGS: TOWNSHIP PLAT CALL FOR LINE BETWEEN N 1/4 COR. + NE COR. SEC 17.

NOTE:  
ALL PARCEL + LOT ACREAGES WERE CALCULATED BY INCLUDING THE ROAD RIGHT-OF-WAY TO THE CENTERLINE, EXCEPT THE R/W ON EL PASO DRIVE WHERE THE WHOLE R/W IS INCLUDED.

- 3/8" REBAR PIN 18" LONG WITH ALUM. TAG WITH "R.L.S. 3144" WRITTEN ON TAG.
- 5/8" REBAR PIN 18" LONG WITH ALUM. TAG WITH "R.L.S. 3144" WRITTEN ON TAG.
- ◇ SECTION OR 1/4 CORNER

**PARCEL MAP OF: PARCEL "H" OF THE LARGE DIVISION MAP OF E 1/2 SECTION 17, T.20N, R.53E. M.D. MER. LOCATED IN: EUREKA CO. NEVADA FOR: DEVIL'S GATE CORP. SCALE 1" = 300' SURVEY + MAP BY ARNOLD C. WOOD R.L.S. 3144 FEB. 1982**