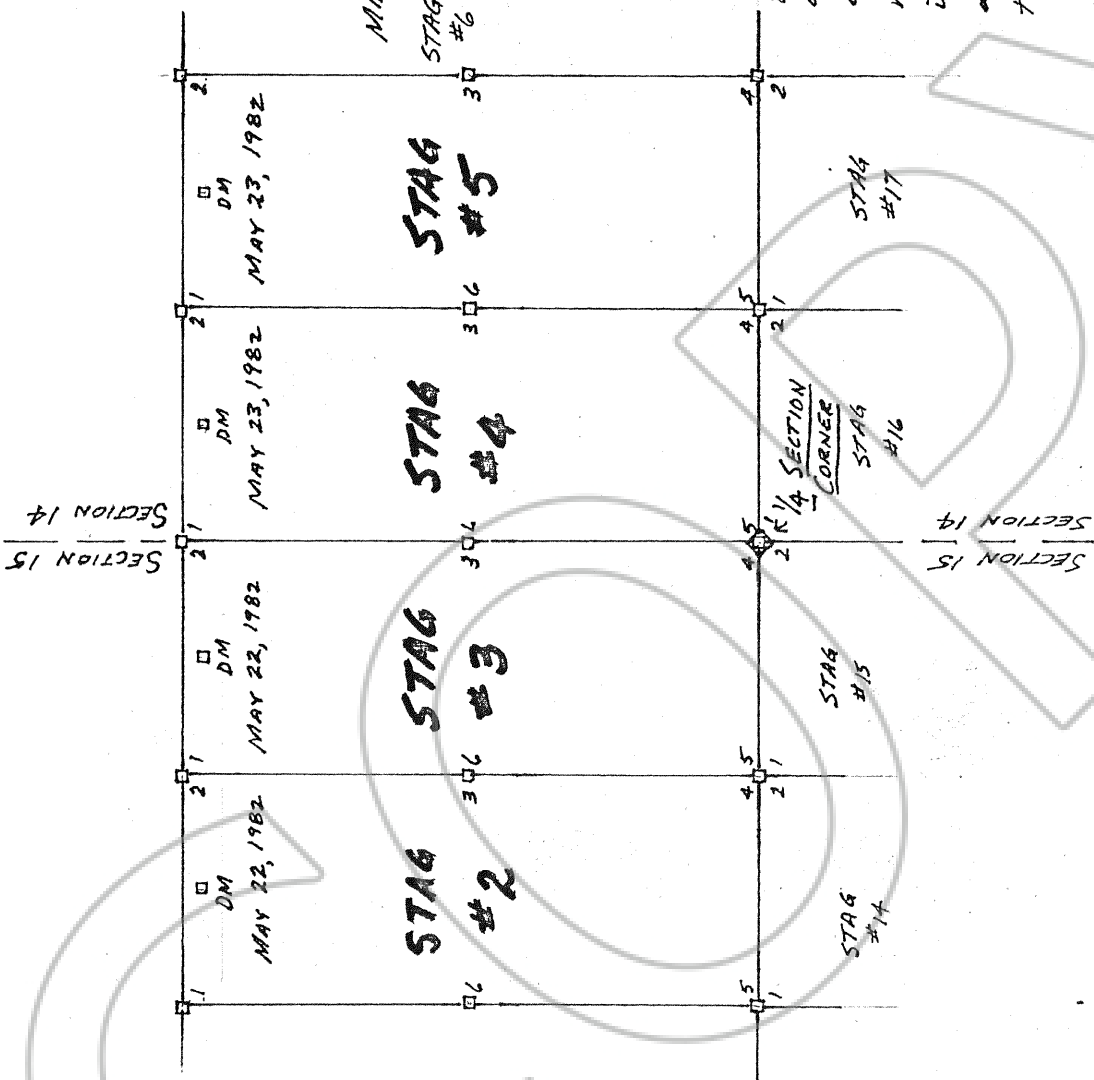


1" = 500'

SECTIONS 14 AND 15
T. 26N, R. 52E., MDS&M
MINERAL HILL MINING DISTRICT

EUREKA COUNTY
NEVADA

All claim corners and side center posts are 4"x4" posts with metal tags affixed marked with the appropriate description of the corner with reference to the claim and with the corner number as indicated on this map. The discovery monuments are posts set in a mound of stones and are marked DM on this map.



Filed

AT THE REQUEST OF William D. Collins

on June 24, 1982, at 38 mins. past 1 P. M.

Book of ~~ORIGINAL RECORDS~~ RECORDS C

SUREKA COUNTY, NEVADA WILLIS A. DePAOLI Recorder

File No. 84431

Fee \$ 60.00

LOCATOR -
WILLIAM D. COLLINS
20802 Pleasant Park Rd.
Conifer, Colorado 80433

84431

JUNE 23, '82