

Sec. 36
T. 34 N., R. 51 E.
M. D. M.

LOCATION DATES

DATE	G.O. CLAIM #
JUNE 23, 1982	89-104, 111-118, 126-140, 149-150, 157-164, 238
JUNE 24, 1982	105-110, 119-125, 141-148, 151-156, 239-246
JUNE 25, 1982	208-237, 247-286
JUNE 28, 1982	165-207, 287-302
JUNE 29, 1982	1-88

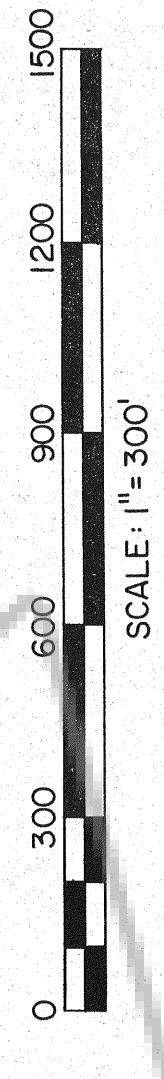
Fd. Mid. Wood Post on Ground
in Disturbed Condition w/ 5/8"
Rebar w/R.L.S. Tag 3535 &
Steel Fence Post By Single
Proportion Method

ALL MONUMENTATION COMPLETED JUNE 29, 1982.

Filed
AT THE REQUEST OF *Ray J. Miller*
July 12, 1982, at 10:46 a.m. min. part II, B.M. h
RECORDS OF
SHERIFF'S OFFICE
SHERIFF
WILLIS A. DEPAOLI Recorder
BUREAU COUNTY, NEVADA
File No. 54847
Fee \$ 35.00

LEGEND

- ◆ Fd. Section Corner
- ◇ Fd. 1/4 Section Corner
- Set 5/8 Rebar w/R.L.S. TAG 3535 & Steel Fence Post
- ◇ Location Monument - 4" x 4" x 4'-6" Wood Post - NW Corner of Claim
- W.C. Witness Corner
- Location Monument and Established Monument



MAP OF
FOR
GQ MILLSITE CLAIMS I-302
CARLIN GOLD MINING COMPANY
P.O. BOX 979
CARLIN, NEVADA 89822
T. 33 & 34 N., R. 51 & 52 E., M.D.M.
EUREKA COUNTY NEVADA

SEE SHEET - 3/3

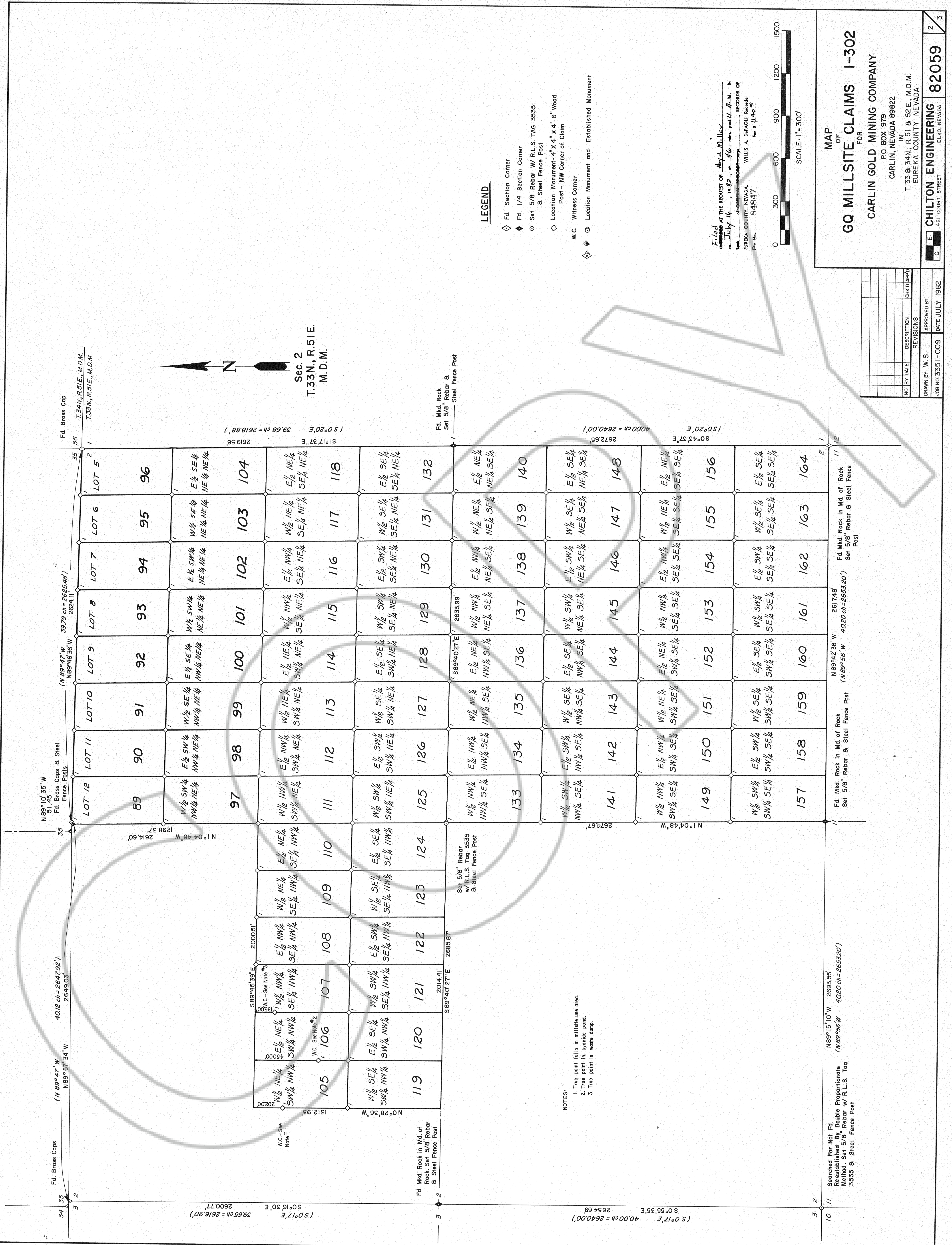
NO. BY DATE DESCRIPTION CHK'D JAP'S

DRAWN BY W.S. APPROVED BY DATE JULY 1982

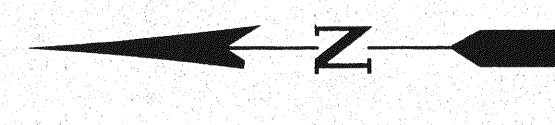
JOB NO. 3351-009

CHILTON ENGINEERING 82059
421 COURT STREET
ELKO, NEVADA

SEE SHEET - 2/3



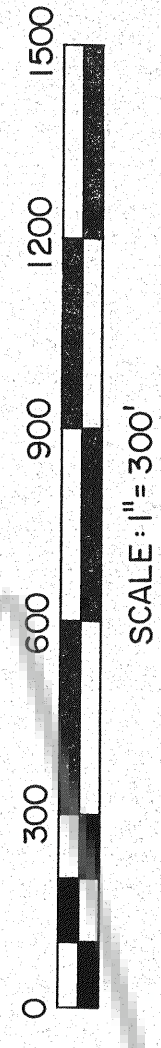
Sec. 2
T.33N., R.51E.
M.D.M.



LEGEND

- ◇ Fd. Section Corner
- ◆ Fd. 1/4 Section Corner
- Set 5/8 Rebar w/ R.L.S. TAG 3535 & Steel Fence Post
- ◇ Location Monument-4"x4"x4'-6" Wood Post - NW Corner of Claim
- W.C. Witness Corner
- ◇ Location Monument and Established Monument

Filed
at the request of **Chilton Engineering**
by **Willis A. DePaoli**, R.L.S., M.D.M.,
Surveyor, No. **54817**,
EUREKA COUNTY, NEVADA.
Willis A. DePaoli, Recorder
EUREKA COUNTY, NEVADA.
File No. **54817**



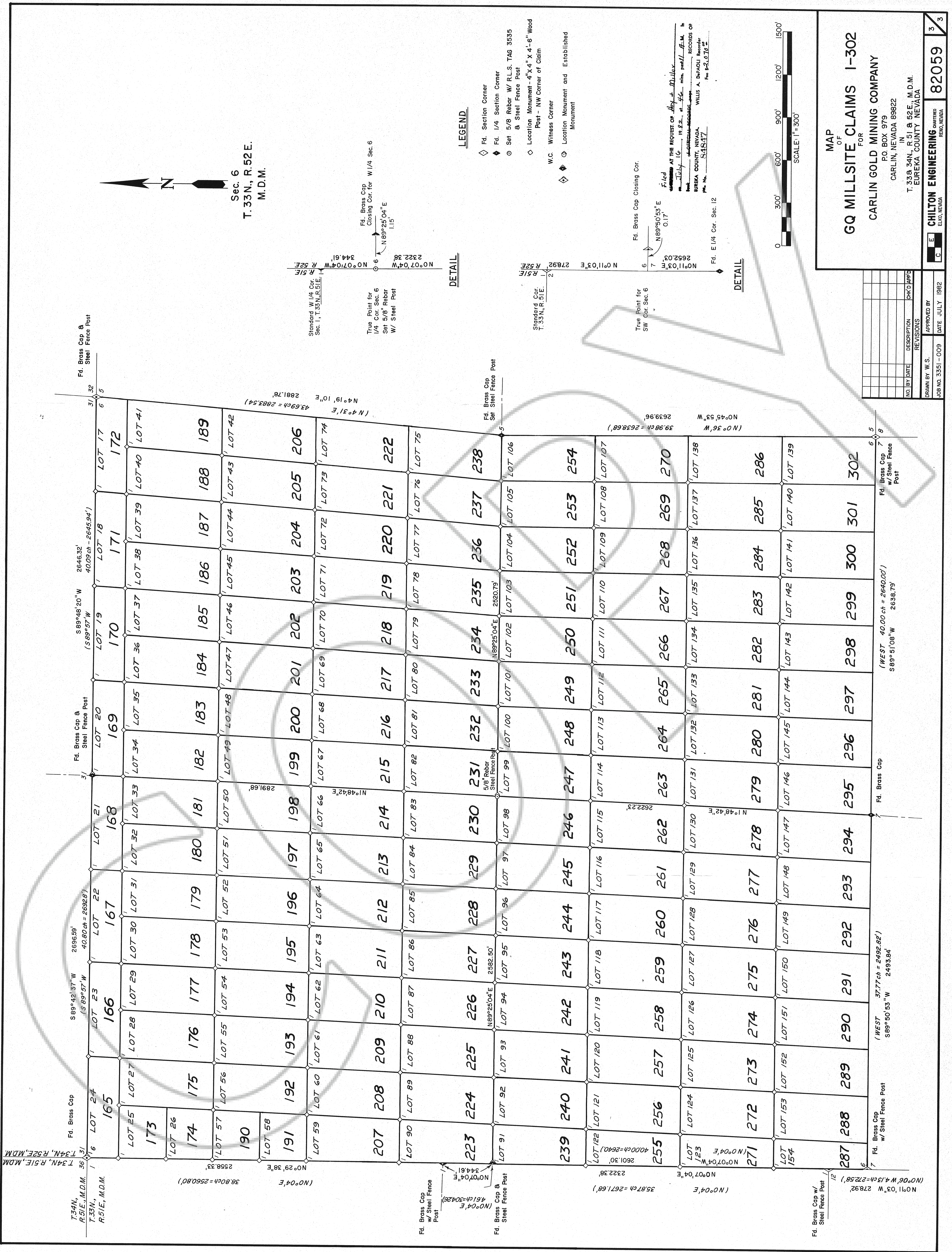
MAP OF GQ MILLSITE CLAIMS 1-302
FOR
CARLIN GOLD MINING COMPANY
P.O. BOX 979
CARLIN, NEVADA 89822
IN
T. 33 N., R. 51 E., M.D.M.
EUREKA COUNTY NEVADA

NO. BY	DATE	DESCRIPTION	CHK'D BY

DRAWN BY: W.S. APPROVED BY: _____ DATE: JULY 1982
JOB NO. 3351-009

NOTES:
1. True point falls in millsite use area.
2. True point in cyanide pond.
3. True point in waste dump.

Searched For Not Fd.
Reestablished By Double Proportionate
Method. Set 5/8" Rebar w/ R.L.S. Tag
3535 & Steel Fence Post



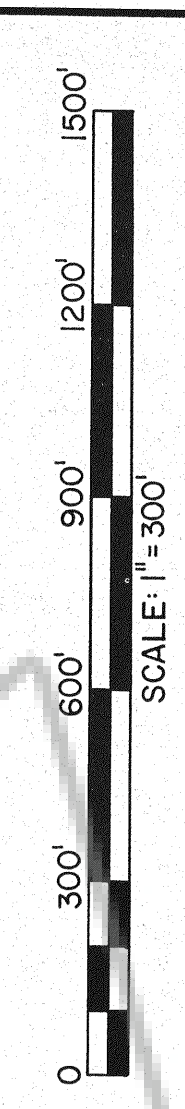
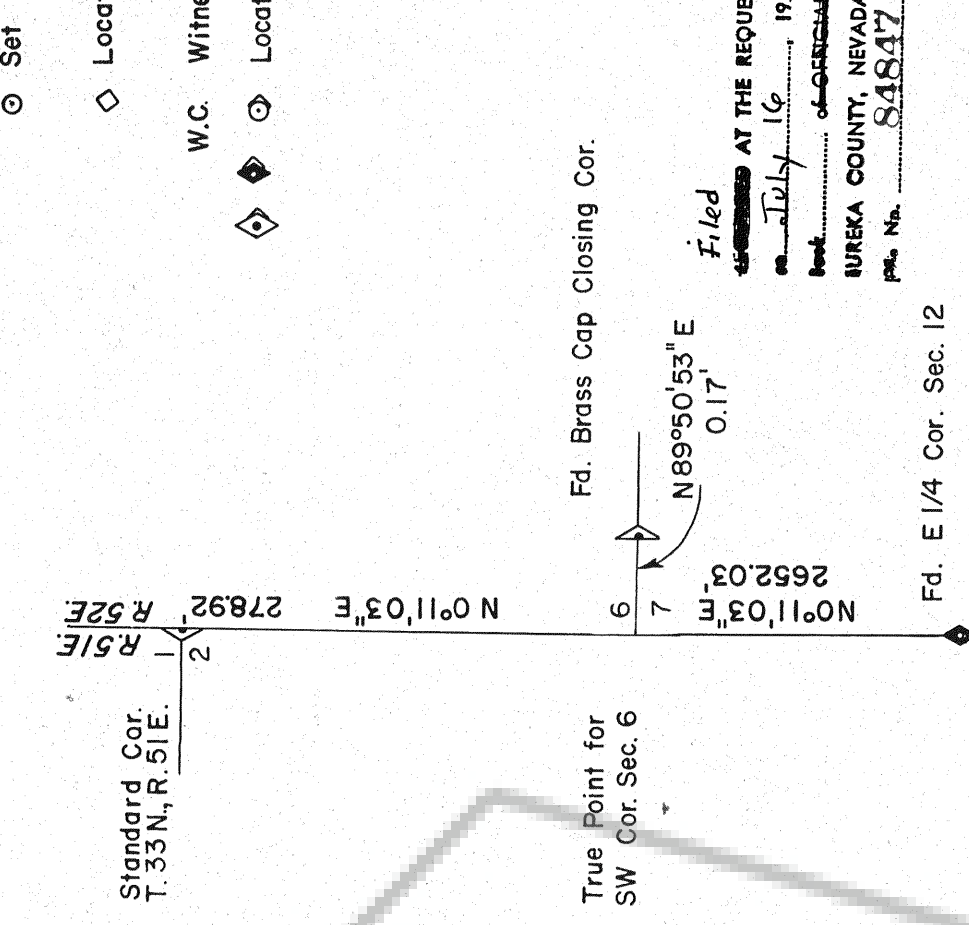
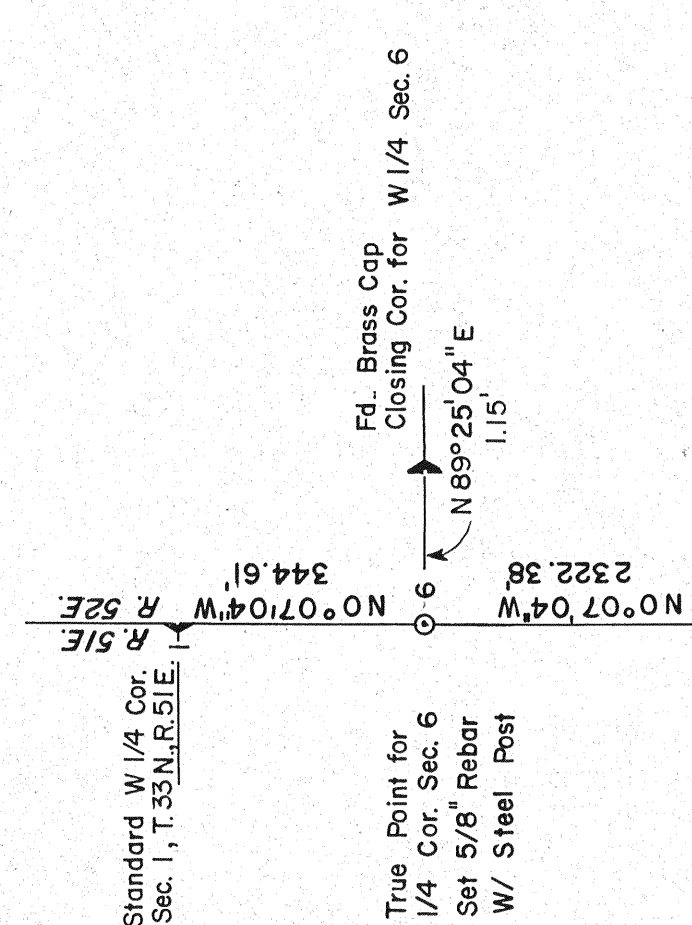
T.34N., R.51E., M.D.M.
T.33N., R.51E., M.D.M.
T.33N., R.52E., M.D.M.



Sec. 6
T.33N., R.52E.
M.D.M.

LEGEND

- ◊ Fd. Section Corner
- ◆ Fd. 1/4 Section Corner
- Set 5/8 Rebar w/ R.L.S. TAG 3535 & Steel Fence Post
- ◇ Location Monument - 4" x 4" x 4'-6" Wood Post - NW Corner of Claim
- ◊ W.C. Witness Corner
- ⊙ Location Monument and Established Monument



MAP OF FOR

GQ MILLSITE CLAIMS 1-302

CARLIN GOLD MINING COMPANY
P.O. BOX 979
CARLIN, NEVADA 89822

IN
T. 33N. 34N., R. 51. E. 52E., M.D.M.
EUREKA COUNTY NEVADA

CHILTON ENGINEERING
EUREKA, NEVADA

82059

DATE: JULY 1982

NO. BY	DATE	DESCRIPTION	CHK'D	APP'D

REVISIONS

DRAWN BY: W.S.
APPROVED BY: _____
JOB NO. 3351-009
DATE: JULY 1982