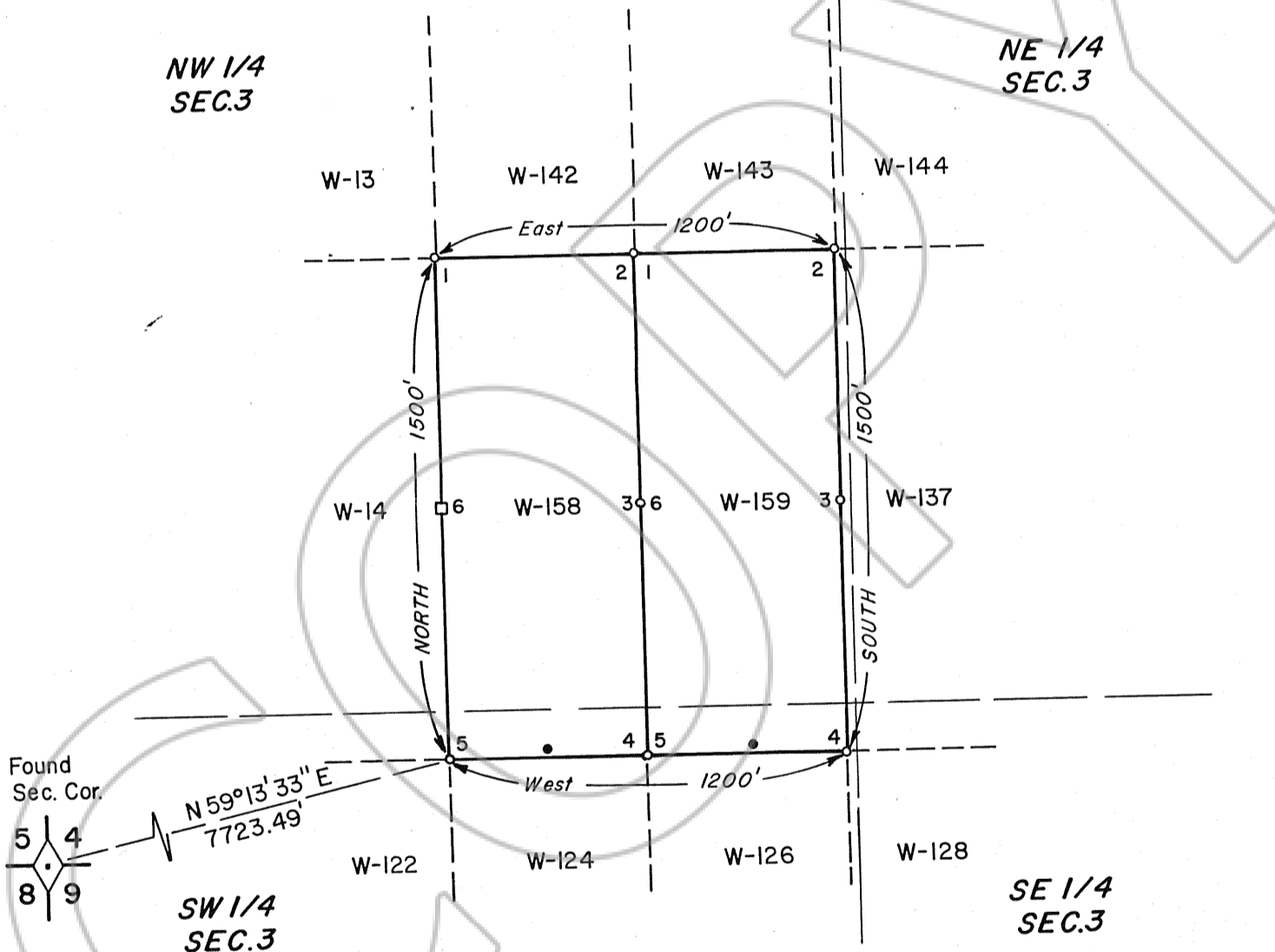


T. 24 N., R. 48 E., M.D.M.  
 T. 23 N., R. 48 E., M.D.M.

NW 1/4  
 SEC. 3

NE 1/4  
 SEC. 3



**NOTES:**

W-158 & W-159 were located  
 Aug. 24, 1982.

The Discovery Monuments are  
 10' from the end lines.

**LEGEND:**

- Discovery Monument P.V.C. pipe
- P.C.V. Pipe
- Wooden post

Filed  
 AT THE REQUEST OF  
 Chevron Resources Co.  
 on September 20, 1982  
 at 59 mins. past 11 A. M.  
 in Book \_\_\_\_\_  
 RECORDS OF EUREKA COUNTY, NEVADA  
 WILL A. DePAOLI  
 Recorder  
 File No. 85379 Fee \$ 30.00

MAP OF LODE CLAIMS  
 W-158 & W-159  
 In Sec. 3, T 23 N, R 48 E  
 Eureka County, Nevada  
 Located by  
 CHEVRON U.S.A., INC., by its agent  
 CHEVRON RESOURCES CO. a division of  
 CHEVRON INDUSTRIES, INC.

85379

M.W.D.