

85501

AFFIDAVIT OF ASSESSMENT WORK
AND PROOF OF PERFORMANCE OF LABOR ON
UNPATENTED MINING CLAIMS

STATE OF NEVADA)
) ss.
COUNTY OF EUREKA)

Fred Jenkins, having been first duly sworn upon oath, deposes and says that:

1. SANTA FE MINING, INC., a corporation organized and existing under the laws of the State of Kansas and duly qualified to do business in the State of Nevada, which by merger completed and effective as of January 1, 1982, has succeeded to all interest of SFP Minerals Corporation, is the owner of the unpatented lode mining claims situated in the Undesignated Mining District, County of Eureka, State of Nevada, located in Section (See Exhibit "A"), Township 23N, Ranges 51 & 52E, listed and described in Exhibit "A" and by this reference made a part hereof for all purposes as if set forth at length herein. Said claims are hereinafter referred to as "the claims".

2. The claims have been duly located under the laws of the United States, and of the State of Nevada, and this Affidavit is made in conformity with those laws, and applicable rules and regulations, and filed with the Clerk of the County in which the claims are situated, as authorized by NRS 517.230.

3. Santa Fe Mining, Inc. has caused to be done and performed upon and for the benefit of the claims the assessment work, and improvements, required by law for the assessment year beginning at noon on September 1, 1981 and ending at noon on September 1, 1982.

4. The work was done between the 1st day of September, 1981 and the 31st day of August, 1982.

5. The character and type of work done, and improvements made included geologic and geochemical survey (see Exhibit "B"), drill site construction and road improvement, drilling and assaying;
and other work authorized by law, and was completed at an actual cost of at least \$100.00 for each of the claims.

6. The work was performed by employees, contractors and agents of Santa Fe Mining, Inc. and by Barringer Resources, Albuquerque Geochemical, Eureka Custom Contractors, Eklund Drilling Company and Monitor Geochemical Lab in Elko, NV.

7. Affiant is a person cognizant of the facts herein stated and is Manager, Non-Fuel Minerals of Santa Fe Mining, Inc.

By *Fred Jenkins* Affiant

STATE OF NEW MEXICO }
COUNTY OF BERNALILLO } ss.

The foregoing instrument was acknowledged before me this 24th day of September, A. D. 1982, by Fred Jenkins and was subscribed and sworn to before me.

Witness my hand and official seal.

BOOK 105 PAGES 38



OFFICIAL SEAL
Signature: *Faye R. Young*
NOTARY PUBLIC - NEW MEXICO
Notary Bond Filed with Secretary of State
My Commission Expires 9/19/85

EXHIBIT "A"

TO

AFFIDAVIT OF ASSESSMENT WORK
AND PROOF OF PERFORMANCE OF LABOR ON
UNPATENTED MINING CLAIMS

<u>Name of Claim</u>		<u>Located</u>			<u>Location Notice Recorded</u>		<u>BLM</u>
		<u>Section</u>	<u>Twp</u>	<u>Range</u>	<u>Book</u>	<u>Page</u>	<u>Serial Numbers</u>
FRAZIER CREEK	#1-23 26-150	1,2, 11&12	23N	51E	96	225-372	NMC 209055-209202
		6,7,18	23N	52E			

Located in Eureka County, Nevada.

EXHIBIT "B"

REPORT TO ACCOMPANY AFFIDAVIT OF ASSESSMENT WORK
AND PROOF OF PERFORMANCE OF LABOR
ON UNPATENTED MINING CLAIMS

GEOLOGICAL AND GEOCHEMICAL SURVEYS OF
THE FRAZIER CREEK MINING CLAIMS,
EUREKA COUNTY, NEVADA

September 23, 1982

Martin G. Steinpress, Geologist
Santa Fe Mining, Inc.
P.O. Box 3588
Albuquerque, NM 87190

BOOK 105 PAGE 540

INTRODUCTION

This report summarized the results of work by Santa Fe Mining, Inc. between September, 1981 and August, 1982. Geologic mapping and geochemical soil sampling was intended to define areas of mineralization. Samples were analyzed by Barringer Resources, Inc. of Sparks, Nevada.

LOCATION OF CLAIMS AND SURVEYS

The claims are located in T23N, R51E, portions of sections 1, 2, 11, & 12 and T23N, R52E, portions of sections 6, 7, and 18 as detailed in Exhibit "A". The geologic map on the property is shown in Figure 1. The locations of soil samples taken on the claims are shown in Figure 2.

PURPOSE

The purpose of the work was to define the type and extent of mineralization on the claim block.

METHODS

Geologic mapping on a 1"=1000' topographic base was conducted in the field. Soil geochemical sampling was conducted over areas of known and suspected mineralization, initially using claim corners and side-centers, and later using a compass and tape survey. Geochemical analyses were performed by a reputable laboratory.

RESULTS

The geology of the area is shown in Figure 1. The eastern part of the map area is underlain by the Ordovician Vinini Formation, which is composed of black chert, shale and siltstone of the western facies. This rests in fault contact against the Devonian Nevada Formation which occupies the central portion of the map area. It is composed of limestone and dolomite of the eastern facies. Rhyolitic ash flow tuffs cover the northern edge of the map area, and Quaternary alluvium and colluvium are very widespread.

Alteration of the Nevada Limestone includes extensive development of silicification, developing bodies referred to herein as jasperoids. These jasperoids form the two major hills in the area, and secondary copper minerals are locally visible. The alteration is at least in part related to small faults in the Nevada Limestone. These zones are sometimes anomalous in gold and silver. Soil sampling delineated areas of anomalous in gold, silver, copper, arsenic and antimony.

CONCLUSIONS

The mineralization is genetically related to silicification of the Nevada Limestone, which occurred along structural zones. The soil survey was successful in delineating target areas of anomalous mineralization.

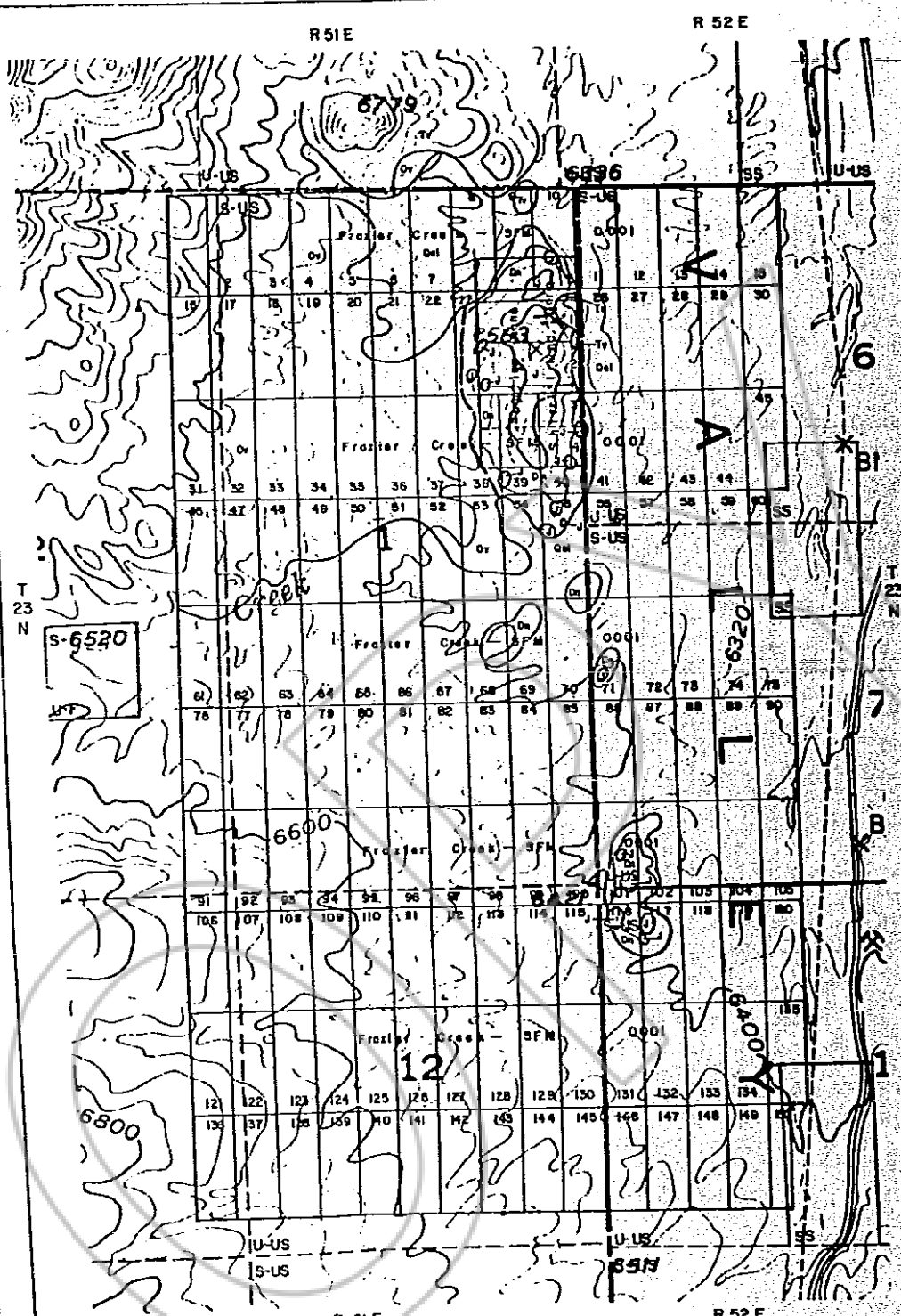
QUALIFICATIONS

The writer, Martin G. Steinpress, is a geologist employed by Santa Fe Mining, Inc. I received a B. A. in geological science from the University of California, Santa Barbara (1977) and a M. S. in geology from the University of New Mexico (1980). During the three years I have worked for Santa Fe Mining, I have conducted and supervised geological surveys, geochemical surveys and other mineral exploration programs.

Martin Steinpress

Martin Steinpress
SFM Geologist

COPY

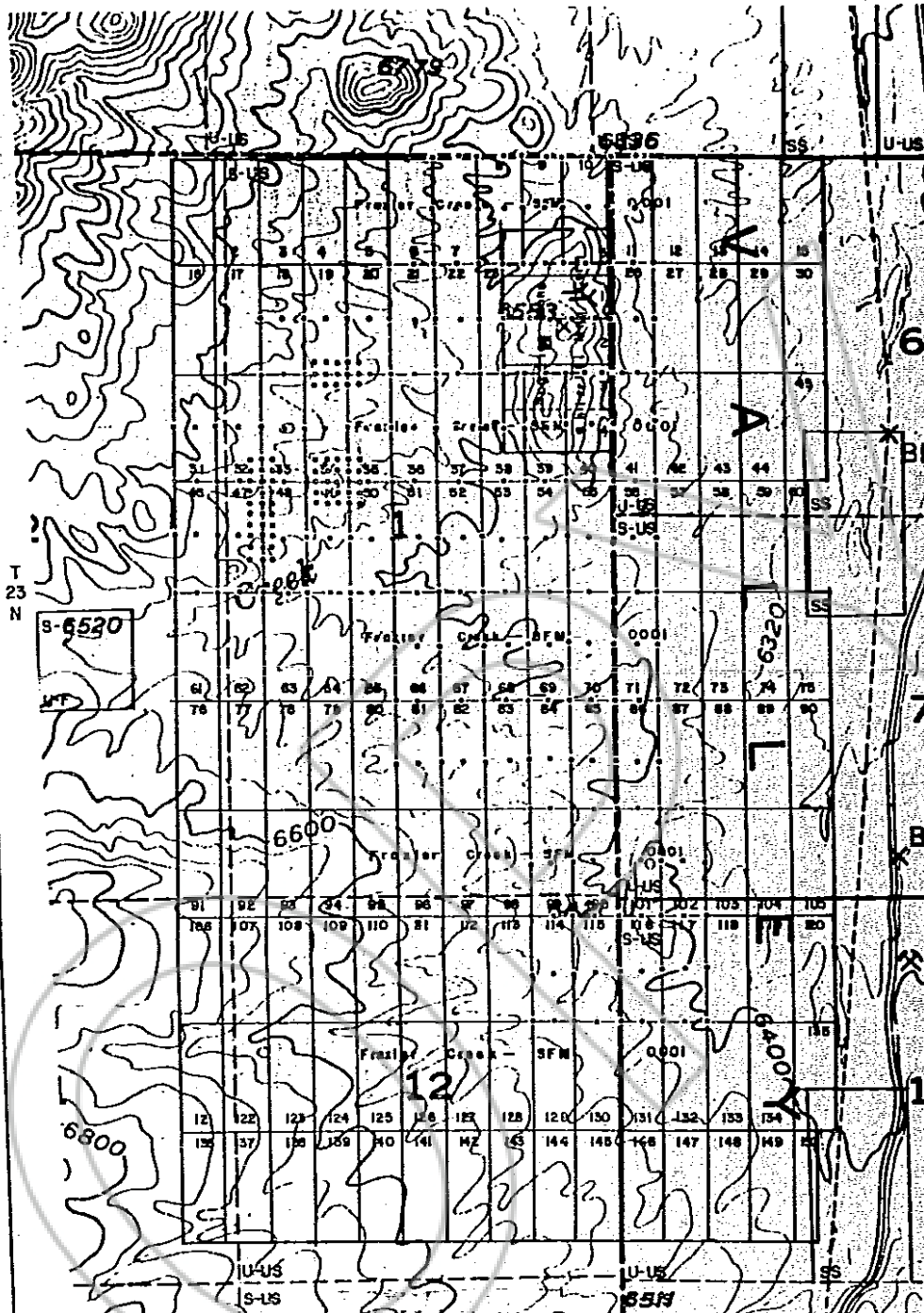


- LEGEND**
- Quaternary Qal Alluvium and Colluvium
 - Qj Jasperoid (acidified limestone)
 - Tertiary Tt UNDIVIDED VOLCANICS: Rhyolite ash flow tuffs, tuff
 - Devolian Da NEVADA FORMATION: Limestone, sandy limestone, and dolomite of the lower plate eastern facies
 - Ordovician Or VININI FORMATION: Black shales, shales and siltstones of the upper plate western facies

Figure 1
 SANTA FE MINING INC.
 FRAZIER CREEK PROJECT
 Eureka County, Nevada
 SCALE: 1" = 2000' DATE 4/11/82

R 51 E

R 52 E



RECORDED AT REQUEST OF
Santa Fe Mining Inc.
 BOOK 105 PAGE 538

R 52 E

* SOIL SAMPLE LOCATIONS

02 OCT 4 A 8: 32

OFFICIAL RECORDS
 EUREKA COUNTY, NEVADA
 WILLIS A. GEPARDI, RECORDER
 FILE NO. 85501
 FEE \$ 74.00

Figure 2

SANTA FE MINING INC.
 FRAZIER CREEK PROJECT
 Eureka County, Nevada
 SCALE: 1"=2000' DATE 10/1/82

BOOK 105 PAGE 545