

DRAWING NUMBER
85518

DRAWING NUMBER
85518

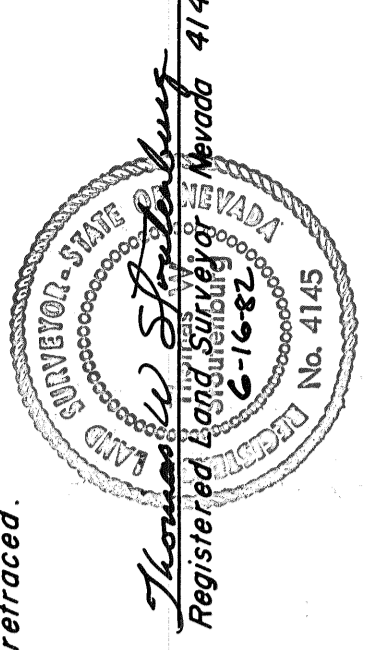
DRAWING NUMBER
85518

DRAWING NUMBER
85518

File Number 85518
Filed in the office of the Eureka County Recorder this 24
day of October 1982, at 4:45 minutes past 9 o'clock
A.M. at the request of T. W. Stoutenburg.

Nice A. Mark
Eureka County Recorder
Fee \$10.00

Surveyors Certificate
I, T. W. Stoutenburg do hereby certify that this map has been
prepared by me from field notes of a survey made at the request
of Burton Bergeron during May, 1982
that this map is true and complete as shown, that the monuments
are of the character and occupy the positions indicated and en-
ables the survey to be retraced.



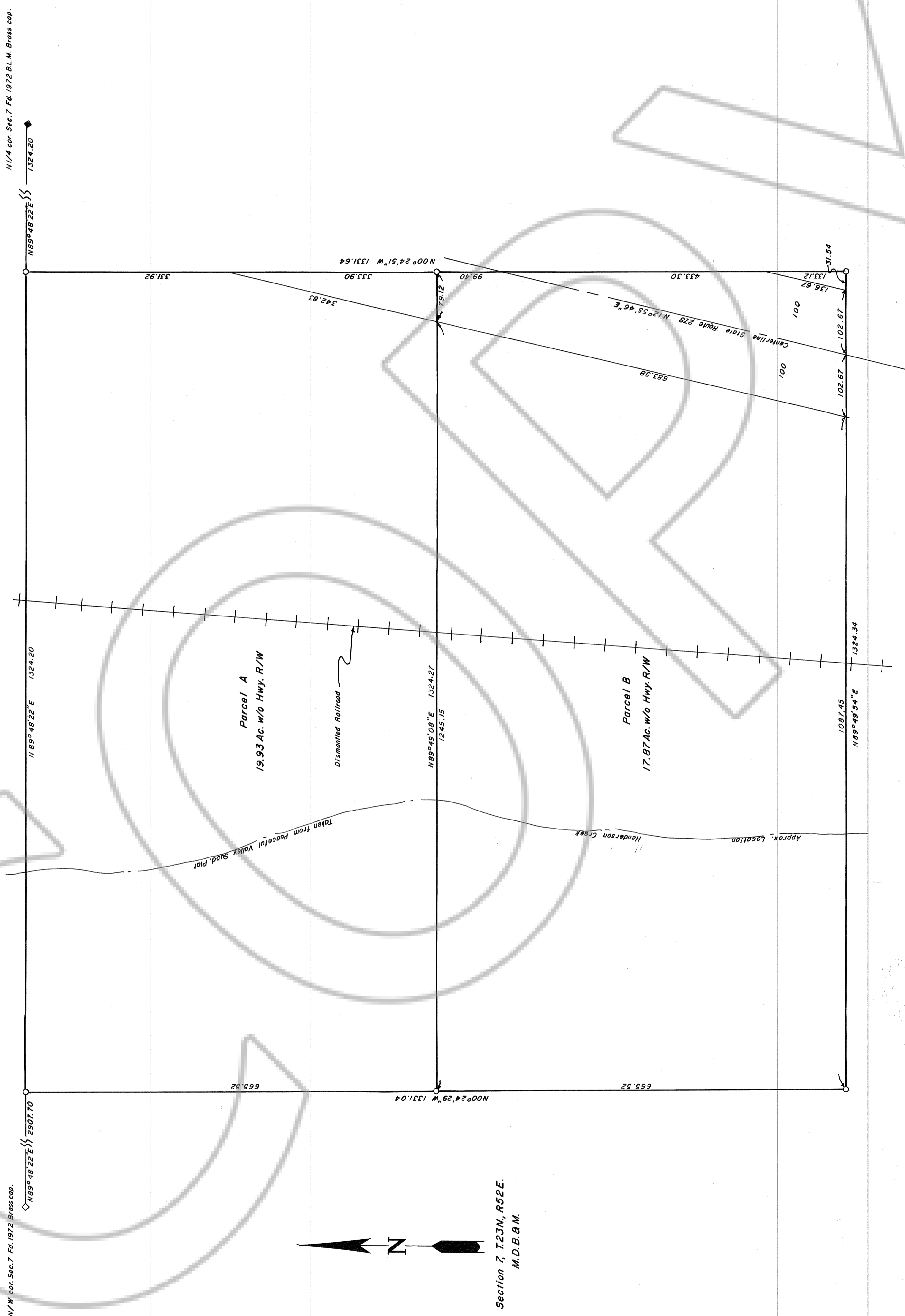
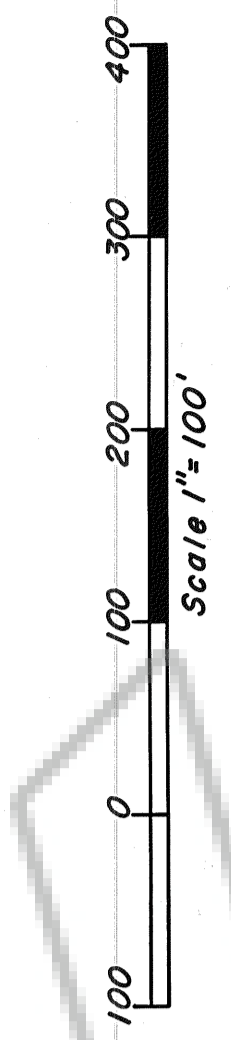
Owners Certificate
Know all men by these presents that the undersigned, being the
owners of the lands designated on this plat, does consent to the
preparation and filing of this map, and that they do hereby offer
without reservations for street and public utility purposes all the
areas delineated for such purposes on this map. In witness
whereof I have set my hand this 23 day of June, 1982.
Burton Bergeron Barbara Bergeron
Burton Bergeron Barbara Bergeron

State of MINNESOTA
County of LAKE OF THE WOODS
On this 23 day of JUNE, 1982, before me, the
undersigned, personally appeared the same as above, known to
me to be the persons executing the foregoing and acknowledge
that they executed the same freely and voluntarily for uses and
purposes therein mentioned.



Approval Eureka County Commissioners
At a regular meeting of the Board of County Commissioners of
Eureka County, State of Nevada, held on the 24 day of
October, 1982, this map was duly approved as a
parcel map for subdivision purposes pursuant to N.R.S. 278.
R.D. Samuels
Chairman

Notes
o indicates a set 5/8" X 24" rebar with a 1' aluminum cap stamped
R.L.S. 4145.
10' utility easements on all property lines.
Parcels A and B formerly described as W/2 Govt. Lot 1.



Basis of bearings
N89°55'00"W between the South 1/4 cor. and the Southwest cor. of Sec. 18, T.23N., R.52E., M.D.B.&M.
as depicted on the Dependent Resurvey Plat compiled by the B.L.M. dated December 10, 1975.

Parcel Map
for
Burton Bergeron
Within the west half of Government Lot no. 1,
of Section 7, T.23N., R.52E., M.D.B.&M.
Eureka County Nevada

Desert - Mountain Surveying Company
146 West Second Street
Winnemucca, Nevada 89445