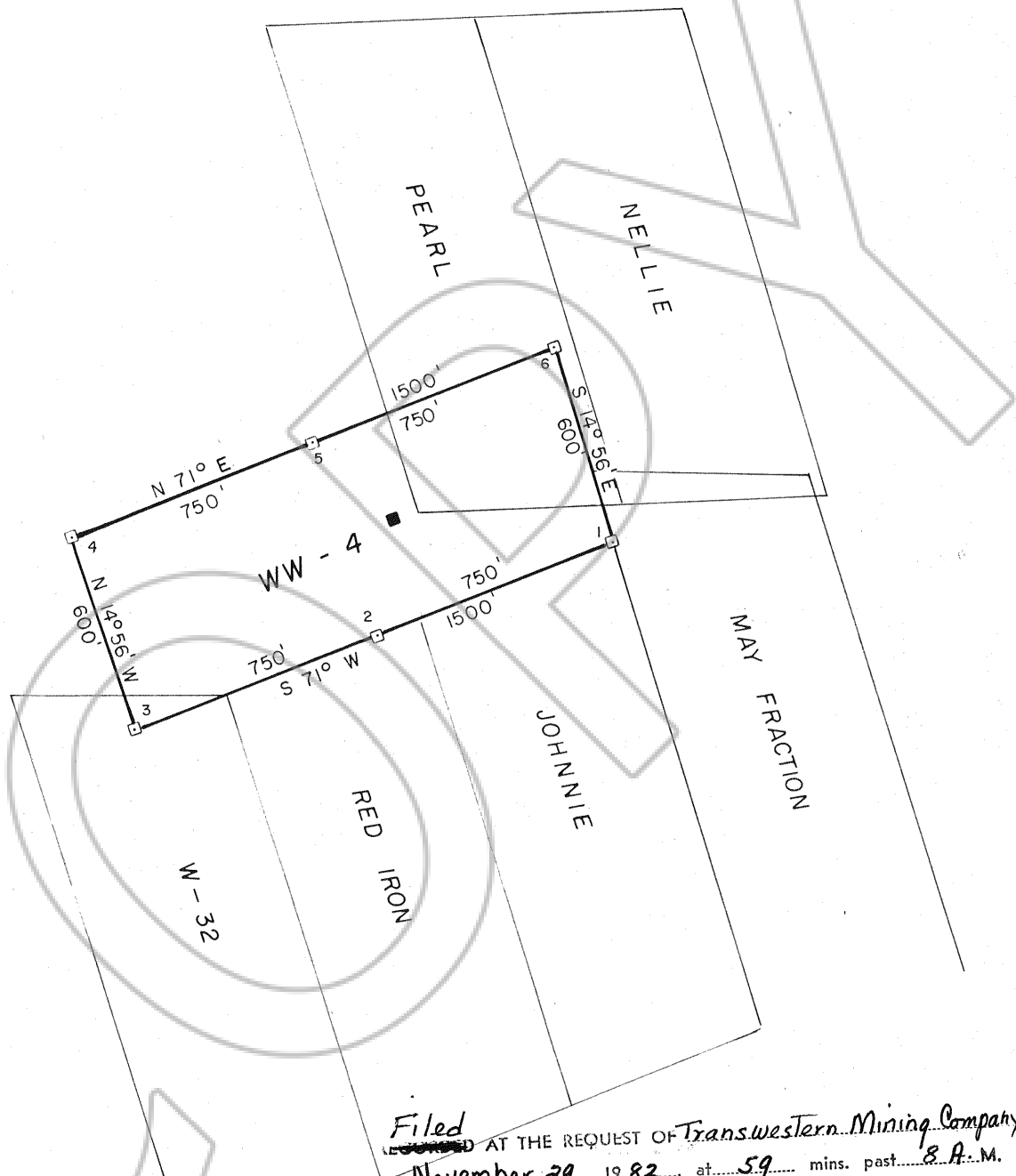


R 53 E  
 SEC 34 SEC 35 T. 17 N.  
 T. 18 N.

S 20° 51' E  
 3277.1'  
 to Cor. 1, WW-4



SCALE: 1" = 500'

LEGEND

- CLAIM CORNER
- LOCATION MONUMENT

NOTE:

ALL CORNERS ARE 4" x 4" x 4.5'  
 LONG WOODEN POSTS WITH  
 ALUMINUM COVERED TAGS DENOTING  
 THE APPROPRIATE CORNER.

Filed  
 AT THE REQUEST OF *Transwestern Mining Company*  
 on *November 29*, 19*82*, at *59* mins. past *8 A.M.*  
 of OFFICIAL RECORDS, page \_\_\_\_\_, RECORDS OF  
 EUREKA COUNTY, NEVADA. WILLIS A. DePAOLI Recorder  
 File No. **85793** Fee \$ **15.00**

MAP OF THE  
**WW-4**  
 LODGE CLAIM

T 18 N, R 53 E MDBM  
 EUREKA MINING DISTRICT  
 EUREKA COUNTY, NEVADA

WESTERN GAS OIL AND MINING, LTD.  
 P.O. BOX 20728  
 RENO, NEVADA 89515

LOCATED: OCTOBER 7, 1982

DRAWN BY AKT

**85793**