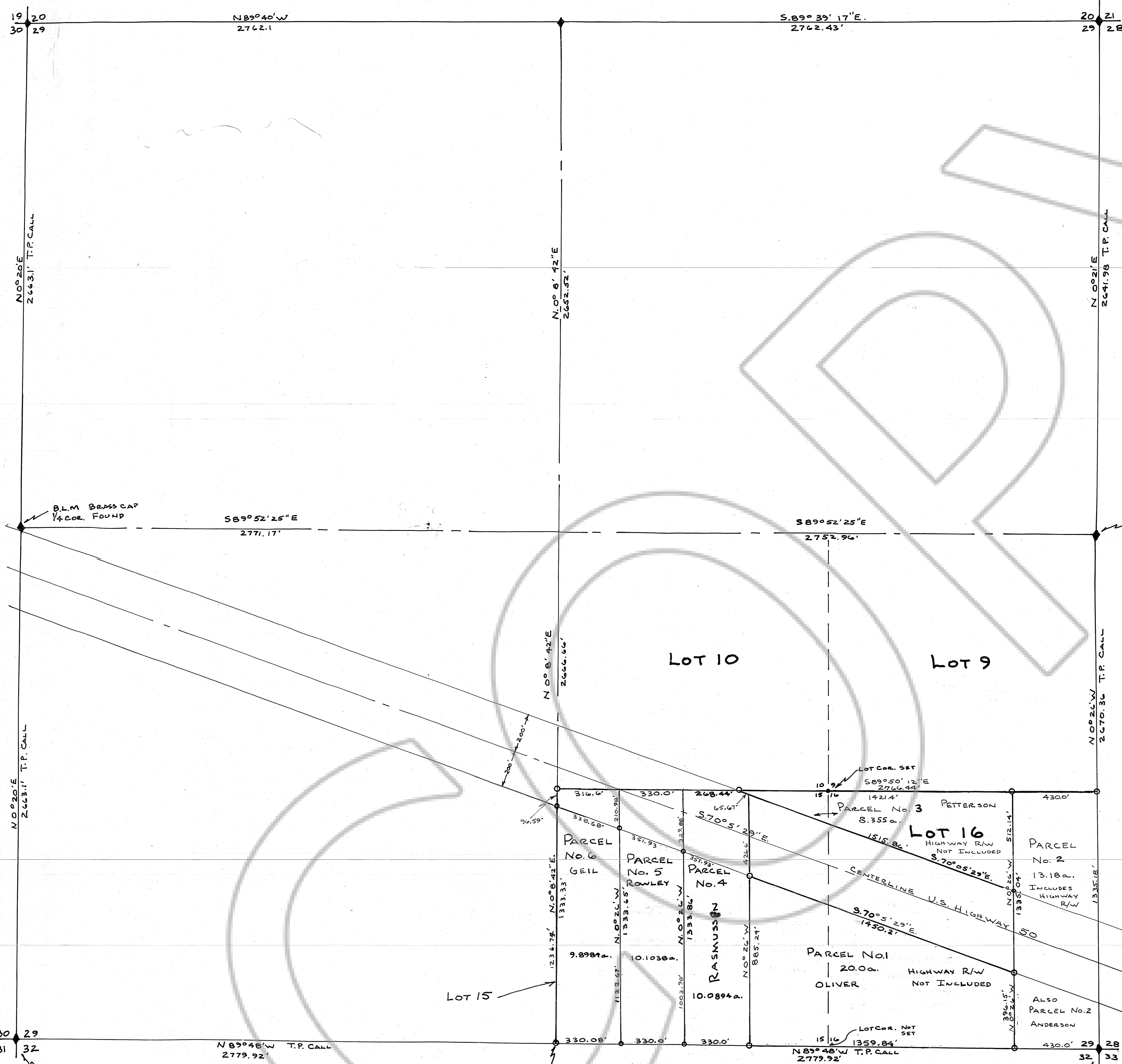


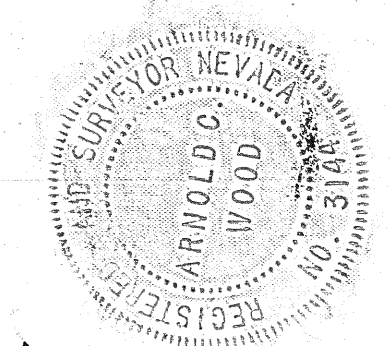
SECTION 29, T.20N., R.53E., M.D.MER., NEVADA



TRUE NORTH

CERTIFICATION

I, ARNOLD C. WOOD, CERTIFY THAT THIS PLAT IS A TRUE + ACCURATE MAP OF THE SURVEY MADE BY ME DURING MARCH 1979 + MAY 1981.  
 Arnold C. Wood  
 NEV. LIC. LAND SURVEYOR No. 3144



OWNERS CERTIFICATION

I, EARL RASMUSSEN, CERTIFY THAT I AM THE OWNER OF RECORD OF LOTS 15+16 SEC. 29, T.20N., R.53E. + THAT THIS PLAT IS AN ACCURATE REPRESENTATION OF RECORD OF SURVEY FOR THE PURPOSE OF DELINEATING PREVIOUSLY DIVIDED PARCELS IN LOTS 15+16.  
 Earl Rasmussen  
 OWNER

APPROVALS

AT A REGULAR MEETING OF THE EUREKA CO. COMMISSIONERS HELD ON 1982, THIS MAP, CONSISTING OF ONE SHEET, WAS PRESENTED AS A RECORD OF SURVEY OF LOTS 15+16, SECTION 29, T.20N., R.53E. M.D.MER., LOCATED IN EUREKA CO. BY EARL RASMUSSEN.

*Roberta M. Darnell*  
 CHAIRMAN, EUREKA CO. COMMISSIONERS  
*Paul Shingleton*  
 CLERK, EUREKA COUNTY

AT A REGULAR MEETING OF THE EUREKA CO. PLANNING COMMISSION HELD ON 1982, THIS MAP, CONSISTING OF ONE SHEET, WAS PRESENTED AS A RECORD OF SURVEY OF LOTS 15+16, SECTION 29, T.20N., R.53E. M.D.MER., LOCATED IN EUREKA CO. BY EARL RASMUSSEN.

*Roberta M. Darnell*  
 CHAIRMAN, EUREKA CO. PLANNING COMMISSION  
*Paul Shingleton*  
 CLERK, EUREKA COUNTY

BASIS FOR BEARINGS: TOWNSHIP PLAT CALL FOR BEARING BETWEEN THE E 1/4 COR. + THE SE COR. SECTION 29.

EXPLANATION

0+1" STEEL PIN SET FOR PARCEL CORNERS WITH ALUMINUM TAG WIRED TO IT.

Filed at the request of *Earl A. Rasmussen* on December 7, 1982, at 4:55 mins. past 8 A.M. in the office of WILLIS A. DePAOLI, Recorder of EUREKA COUNTY, NEVADA. File No. 85823 Fee \$ 10.00

RECORD OF SURVEY OF: LOTS 15+16, SEC. 29, T.20N., R.53E. LOCATED IN: EUREKA CO. NEVADA FOR: EARL RASMUSSEN SCALE: 1" = 300' SURVEY + MAP BY A.C. WOOD R.L.S. 3144 MAR. 1982

DRAWING NUMBER 85823  
 RASMUSSEN  
 SAFCO PRODUCTS • NEW HOPE, MINNESOTA  
 REGISTERED BY PATENT NUMBER 6551